

Incremental encoders

Mini series - blind or through hollow shaft

10...2048 pulses per revolution

BHK



BHK with blind hollow shaft

Features

- Mini encoder with blind or through hollow shaft
- Optical sensing method
- Max. 2048 pulses per revolution
- Housing \varnothing 40 mm
- Operation speed max. 12000 rpm
- Blind or through hollow shaft
- Versatile mounting accessories

Technical data - electrical ratings

Voltage supply	5 VDC \pm 10 % 10...30 VDC
Consumption typ.	60 mA (5 VDC, w/o load) 30 mA (24 VDC, w/o load)
Pulses per revolution	10...2048
Reference signal	Zero pulse, width 90°
Sensing method	Optical
Output frequency	\leq 100 kHz
Output signals	A 90° B, N + inverted
Output stages	Linedriver/RS422 Push-pull short-circuit proof
Interference immunity	DIN EN 61000-6-2
Emitted interference	DIN EN 61000-6-3
Approval	UL approval / E217823

Technical data - mechanical design

Size (flange)	\varnothing 40 mm
Shaft type	\varnothing 6 mm (through hollow shaft) \varnothing 12 mm (blind hollow shaft)
Protection DIN EN 60529	IP 42, IP 65
Operating speed	\leq 12000 rpm
Operating torque typ.	0.0021 Nm (IP 42) 0.0075 Nm (IP 64)
Materials	Housing: polyamide black Flange: aluminium
Operating temperature	-20...+85 °C
Relative humidity	95 % non-condensing
Resistance	DIN EN 60068-2-6 Vibration 10 g, 10-200 Hz DIN EN 60068-2-27 Shock 50 g, 11 ms
Connection	Connector M9, 5-pin Connector M9, 8-pin Cable 1 m
Weight approx.	100 g

Incremental encoders

Mini series - blind or through hollow shaft

10...2048 pulses per revolution

BHK

Terminal assignment

Cable

for connection reference -5

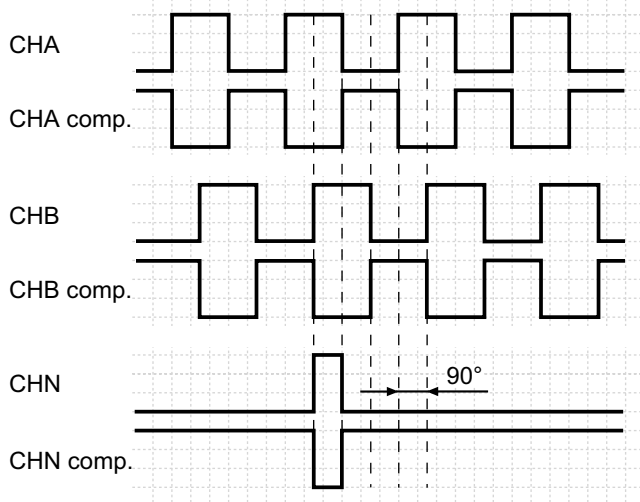
05A

Core colour	Signals	Core colour	Signals
brown	+Vs	brown	+Vs
green	CHA	green	CHA
red	CHA compl.	–	–
yellow	CHB	yellow	CHB
blue	CHB compl.	–	–
pink	CHN	pink	CHN
grey	CHN compl.	–	–
white	0 V	white	0 V
Cable data	8 x 0.14 mm ²	5 x 0.14 mm ²	
Screen	connected to flange		

Output signals

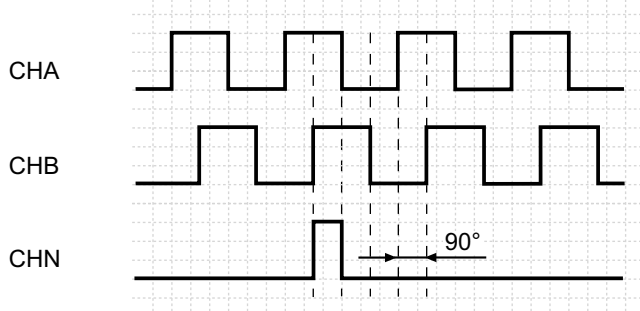
Counter clockwise rotating direction when looking at the flange.

05A



Counter clockwise rotating direction when looking at the flange.

24K



Connector M9 male

for connection reference -9

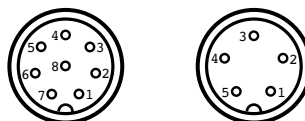
05A

Connector	Core colour*	Signals
Pin 1	white	0 V
Pin 2	brown	+Vs
Pin 3	green	CHA
Pin 4	yellow	CHB
Pin 5	grey	CHN compl.
Pin 6	pink	CHN
Pin 7	blue	CHB compl.
Pin 8	red	CHA compl.

24K

Connector	Core colour*	Signals
Pin 1	white	0 V
Pin 2	brown	+Vs
Pin 3	brack	CHA
Pin 4	blue	CHB
Pin 5	grey	CHN

*these core colours are valid for the assembled mating connectors (see accessories)



Incremental encoders

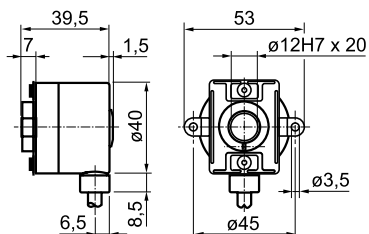
Mini series - blind or through hollow shaft

10...2048 pulses per revolution

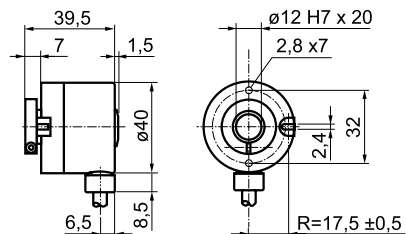
BHK

Dimensions

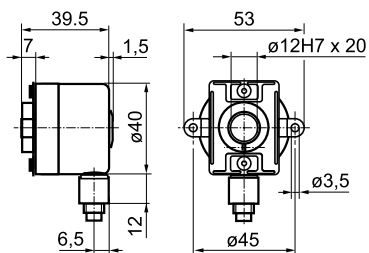
BHK clamping ring and spring washer



BHK clamping ring



BHK connector output radial



BHK connector dimensions

