

Linear encoders without bearings incremental

System for linear motion feedback

Sensing head with magnetic tape

MIL10



MIL10

Features

- Sensing head with magnetic tape
- Robust magnetic sensing method
- Output signals A 90° B with index signal
- Output circuits: HTL/push-pull and TTL/RS422
- Resolution up to 5 µm (4-times evaluation)
- Non-contact, wear-free sensing system
- High resistant to dirt, vibrations

Technical data - electrical ratings

Sensing method	Magnetic
Resolution	5 µm (4-times evaluation) 10 µm (4-times evaluation) 25 µm (4-times evaluation)
Interpolation	20-fold, 50-fold, 100-fold
Output stages	HTL/push-pull TTL/RS422
Output signals	A+, B+, R+, A-, B-, R-
Reference signal	Index signal, width 90°
Output frequency	≤350 kHz
Short-circuit proof	Yes
System accuracy	±(0.02 mm + 0.04 mm x magnetic tape length (m))
Initializing time	≤50 ms after power on (see general informations)
Scan ratio	40...60 %
Interference immunity	DIN EN 61000-6-2
Emitted interference	DIN EN 61000-6-4
Approvals	CE, UL

Technical data - electrical ratings (HTL)

Voltage supply	10...30 VDC
Reverse polarity protection	Yes
Consumption typ.	20 mA (w/o load)

Technical data - electrical ratings (TTL)

Voltage supply	5 VDC ±5 %
Consumption typ.	30 mA (w/o load)
Recommended cable termination	On control side each channel pair 120 Ohm

Technical data - mechanical design

Dimensions (sensor head)	10 x 15 x 45.5 mm
Protection DIN EN 60529	IP 66, IP 67
Movement speed	<5 m/s (resolution 5 µm) <10 m/s (resolution 10 µm) <25 m/s (resolution 25 µm)
Operating temperature	-40...+85 °C
Working distance	0.1...0.6 mm
Resistance	DIN EN 60068-2-6 Vibration 30 g, 10-2000 Hz DIN EN 60068-2-27 Shock 500 g, 6 ms
Material	Housing: zinc diecast, plated
Relative humidity	EN 60068-2-78:2010 EN 60068-2-30:2005 93 % condensation permitted
Connection	Cable 2 m Cable 0.3 m with connector M12
Weight approx.	130 g

Linear encoders without bearings incremental

System for linear motion feedback

Sensing head with magnetic tape

MIL10

Part number

MIL10-S2. . **P.A**

Resolution

0005	5 μm (4-times evaluation)
0010	10 μm (4-times evaluation)
0025	25 μm (4-times evaluation)

Voltage supply / output stages

E	4.75...5.25 VDC / TTL/RS422, 6 channel
N	10...30 VDC / HTL/push-pull, 6 channel

Connection

- L Cable 2 m
- C Cable 0.3 m with connector M12, 8-pin, pin terminals, ccw

Linear encoders without bearings incremental

System for linear motion feedback

Sensing head with magnetic tape

MIL10

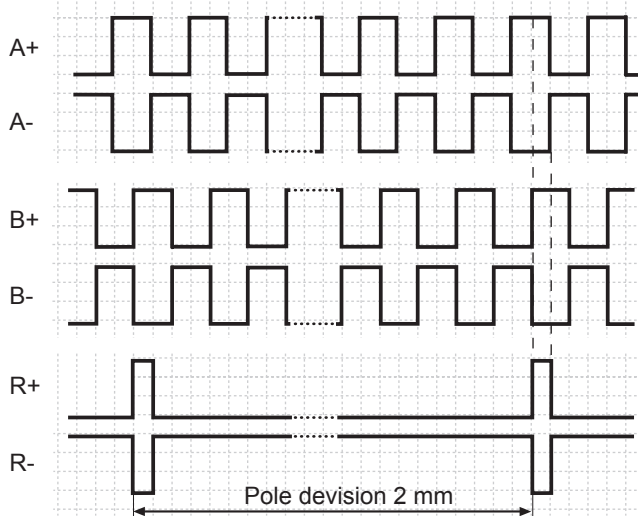
Accessories

Connectors and cables

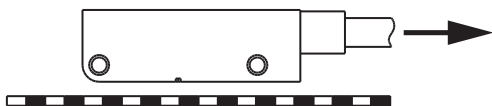
10146775 Female connector M12, 8-pin, straight

Output signals

Signal A leads to signal B by 90° in the moving direction shown below.



Rotational or linear direction



Trigger level

Outputs	HTL/push-pull
Output level High	>+Vs -2 V
Output level Low	<0.5 V
Load	≤20 mA

Outputs	TTL/RS422
Output level High	>2.4 V
Output level Low	<0.5 V
Load	≤20 mA

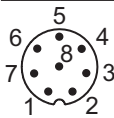
General informations

The initializing time of the sensor is 50 ms. Output signals may not be processed during this time.

Terminal assignment

Cable or cable 0.3 m with connector M12

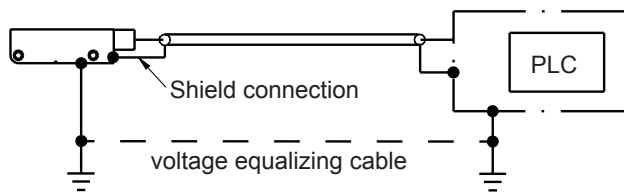
Connector	Core colour	Signals
Pin 1	white	0 V
Pin 2	brown	+Vs
Pin 3	green	A+
Pin 4	yellow	A-
Pin 5	grey	B+
Pin 6	pink	B-
Pin 7	blue	R+ (zero pulse)
Pin 8	red	R- (zero pulse inv.)



Cable screen: connected to sensor housing or connector M12 and sensor housing.

Cable data: PUR 4 x 2 x 0.14 mm², shielded
 Bending radius: >50 mm (fix) / >100 mm (cable chain)
 Outer diameter: 6.3 mm

Recommended grounding concept



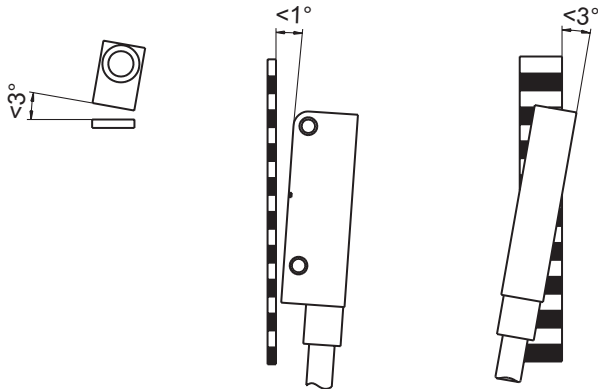
Linear encoders without bearings incremental

System for linear motion feedback

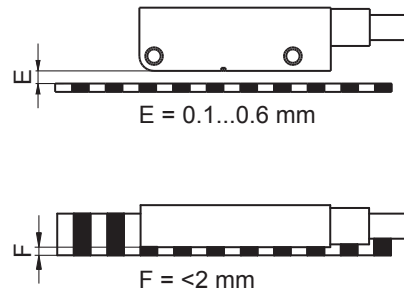
Sensing head with magnetic tape

MIL10

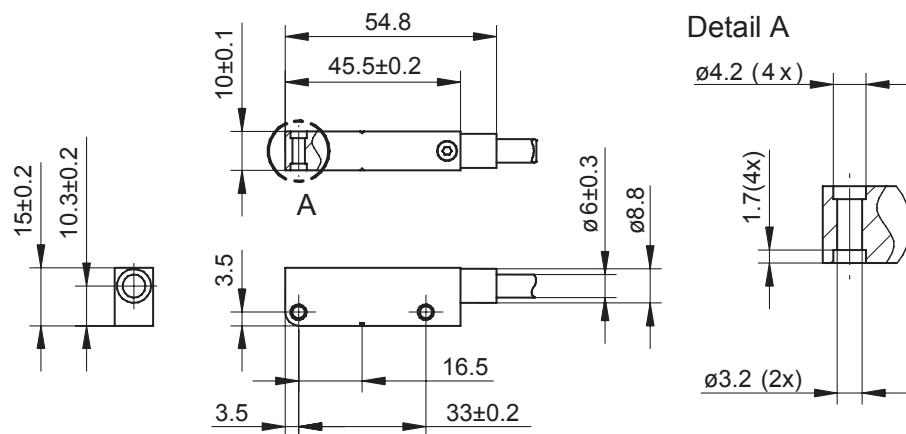
Angular misalignment



Working distance



Dimensions



Linear encoders without bearings incremental

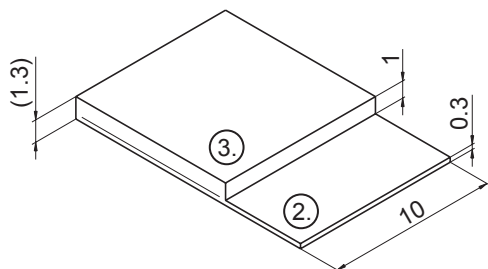
System for linear motion feedback

Sensing head with magnetic tape

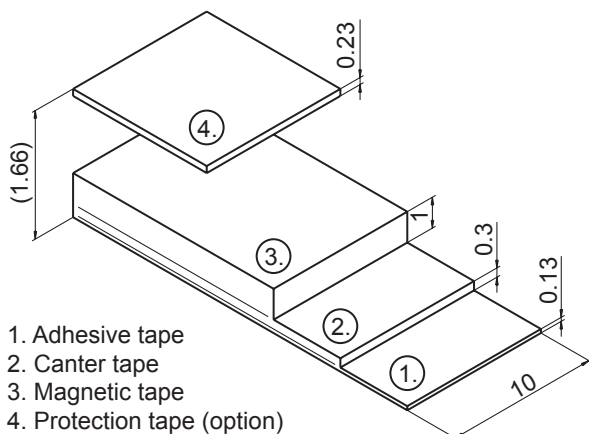
MIL10

Magnetic tapes

Layers – magnetic tape



Layers – magnetic tape self-adhesive



- 1. Adhesive tape
- 2. Canter tape
- 3. Magnetic tape
- 4. Protection tape (option)

Technical data - magnetic tape

Measuring range	<50 m
Pole length	2 mm
Precision class	$\pm 40 \mu$ (further upon request)
Tape width	10 mm
Material	Elastomer bounded tape on an stainless steel support
Mounting	Self-adhesive or self-mounting
Bending radius	Min. 75 mm

Part number

10128606	MIL10-M402.xxxxx.P10NN Magnetic tape individual length in meter
10157184	MIL10-M402.xxxxx.P10TN Magnetic tape self-adhesive, individual length in meter
10157164	Protection tape self-adhesive, stainless steel, 0.3 mm thick, individual length in meter