

LVE-ALX

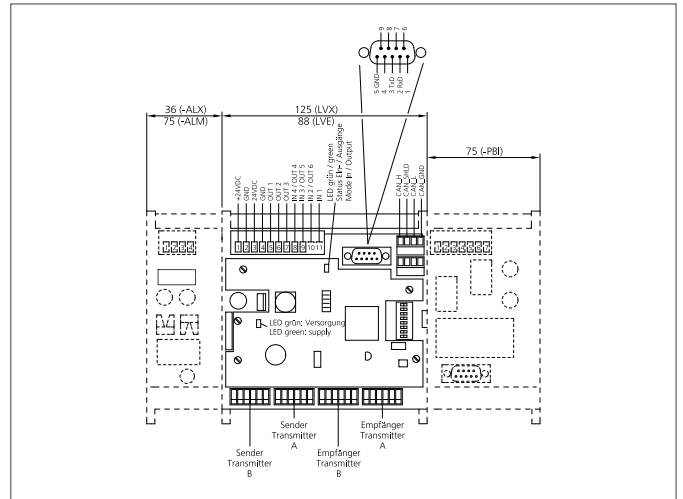
Evaluation Electronic

- Evaluation electronics for one light curtain LI ...
- Diagnosis LEDs
- Parameters for functions can be freely assigned
- DIN-rail mountable
- Interfaces: 1 input for which parameters can be set, 3 combined inputs/outputs, 3 outputs, RS232



Safety instructions

The Instruments are not to be used for safety applications, in particular applications in which safety of persons depends on proper operation of the instruments.
These instruments shall exclusively be used by qualified personnel.



TECHNICAL INFORMATION (typ.)	+20°C, 24V DC
Size	124 x 126 x 60 mm (Dimensions)
Number of beams	max. 500 evaluable
Number	1 (number of light curtains to be operated)
Number of inputs/outputs	3
Output function	parametrizable
Service voltage	20 ... 26 V DC
Operating distance	250 ... 6.000 mm
Light beam evaluation	Parameters can be assigned horizontally / diagonally
Cycle time per light beam	0,05 ms depending on configuration and range of the light bars
Switching output	pnp, 24 V DC, 0,25 A (1x)
Analog output	0 ... 10 V (2x)
Contact rating	250 mA
Interface	3 (Combined IOs)
Inputs for which parameters can be set	24 V DC, 12 mA, 3.000 Hz (1x)
Display	LED: error indicator
Ambient temperature	0 ... +40 °C
Protection class	IP 00
Protection degree	III, operation on protective low voltage
EMC directives	EN 61000-6-3:2001 / EN 61000-6-1:2001
Casing material	plastics