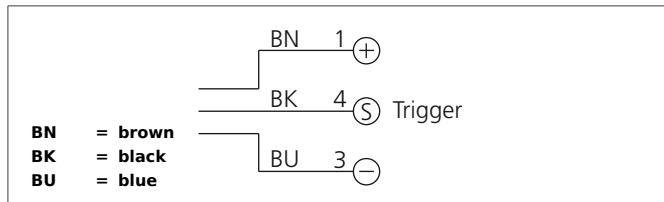
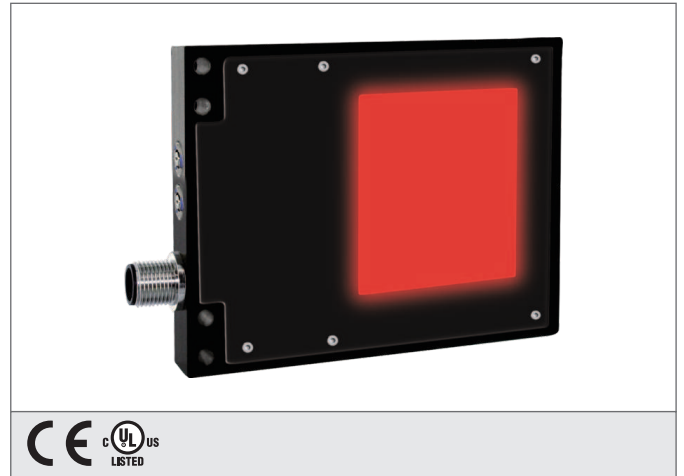


BEK-F50/50-G1TI-IBS

Backlight

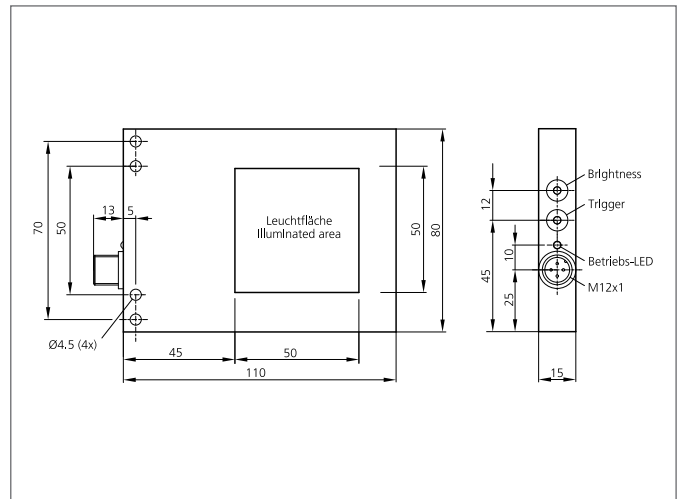
- Constant level of light intensity over the entire voltage range
- Homogenous luminous field
- High efficiency
- Light intensity can be adjusted



Safety instructions

The Instruments are not to be used for safety applications, in particular applications in which safety of persons depends on proper operation of the instruments.

These instruments shall exclusively be used by qualified personnel.



TECHNICAL INFORMATION (typ.)	+20°C, 24V DC
Design	Backlight
Illuminated area	50 x 50 mm
Characteristics	Internal control of power output, Trigger input
Light colour	Red, 625 nm
Service voltage	15 ... 35 V DC (Supply Class 2)
Internal power consumption	140 mA, (24 V DC)
Trigger input low level	0 ... <2,8 V
Trigger input high level	> 3,3 ... 35 V
Power	3,4 W (24 V DC)
Shock-/vibration load	10 ... 55 Hz / 1,0 mm / 30 g
Inverse polarity protection	Yes
Display	LED: green - operation indicator
On-delay time (Trig.)	0,464 ms
Switch off delay (Trig.)	0,232 ms
Ambient temperature	0 ... +50 °C
Protection class	IP 67
Protection degree	III, operation on protective low voltage
Risk group (DIN EN 62471)	Free group
Casing material	Aluminium black anodized
Material	PC, opal diffus (Protection optics)
Connection	Connector, M12, 3-poled
Connecting cable	VK ...