

## ID-06 and VS-06 LED Board Replacement Guide



ID-06



VS-06

The ID-06 / VS-06 LED Board Replacement Kit allows you to replace the standard red LEDs with LEDs of another color.

Warning: Running a red LED board on a camera with a white LED color profile will damage both the board and the camera.

This guide describes how to use the:

- LED Board Replacement Kit

### Hardware Required

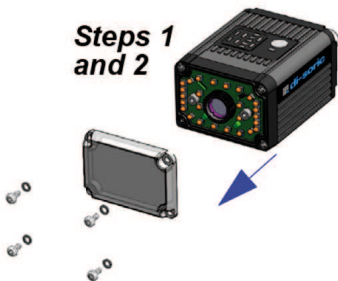
- 1 LED Board (VSID-BE-X)
- 4 4-40x1/4" Phillips-head Screws w/ Split Lock Washers (included)
- 1 Replacement Gasket (included)
- 1 Phillips screwdriver (not included)

**Important:** Be sure to use ESD-safe procedures while replacing the LED board.

1. Remove the four screws and washers from the front cover of the camera and set them aside.
2. Remove the front cover and set it aside.

**Note:** If the gasket slips out of the optical chassis, you can replace it with the gasket provided in this kit (VSID-W-K-000) ID-06 / VS-06.

3. Remove the two screws from the illumination diffuser and set them aside.



4. Remove the illumination diffuser and set it aside.

**Steps 3  
and 4**



5. Gently remove the LED illumination board and replace it with the new LED board, ensuring that the connector is securely attached.



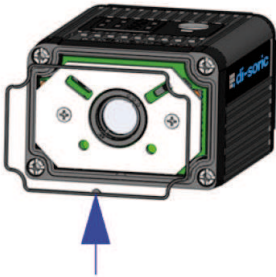
6. Replace the illumination diffuser and screw it down.  
Do not over-tighten the screws (2-3 in./lbs. maximum).



7. Replace the front cover and secure it with the washers and screws provided. Do not over-tighten the screws (5-6 in./lbs. maximum).



Important: When replacing the front cover, be sure that the gasket fits completely into its groove on the optical chassis. The triangle at the bottom of the gasket should fit into the key at the bottom of the groove.



di-soric GmbH & Co. KG

Steinbeisstraße 6

73660 Urbach

Germany

Fon: +49 (0) 71 81 / 98 79 - 0

Fax: +49 (0) 71 81 / 98 79 - 179

[info@di-soric.com](mailto:info@di-soric.com)