

# Quick Start Guide ID-08 / ID-09 Handheld Reader



ID-08, ID-09 Quick Start Guide

## Step 1 — Check Required Hardware

The ID-08 / ID-09 is shipped with one of the following cables:



6' USB  
Straight  
Cable

8' RS-232  
Coiled  
Cable

### USB Hardware

1. ID-08 / ID-09 Handheld Reader
2. USB cable

### RS-232 Hardware

1. ID-08 / ID-09 Handheld Reader
2. RS-232 Cable
3. RS-232 Power Supply

### Detaching the Cable

The reader can be converted from USB to RS-232 or from RS-232 to USB by changing the cable and scanning the appropriate communications programming symbol below. To detach the USB or RS-232 cable from the reader, press a paper clip into the hole on the side of the handle and gently pull the cable out of the connector.



USB  
Interface



RS-232  
Interface



M0166\_01  
Save  
Settings

## Step 2 — Set Up Hardware (USB)

Note: The USB interface draws its power from the host.

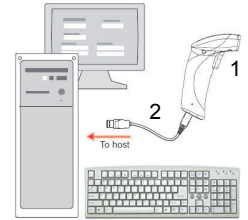
### Hardware for USB

1	ID-08 Handheld Reader	ID-08-IM3-2-U
	ID-09 Handheld Reader	ID-09-IM3-2-U

### USB Installation

To power on the reader, plug the USB cable into the reader's handle and into the host's USB port. After several seconds, the reader will beep twice and the LED will turn off. The reader will now be ready to use.

Important: If you use a USB hub, be sure that it is a powered hub.



USB Hardware



Q0001\_2  
Default to USB  
(HID)



Test Symbol  
(ABCDEFGHIJKLMNOP)



M0166\_01  
Save  
Settings

## Step 2 — Set Up Hardware (RS-232)

### Hardware for RS-232

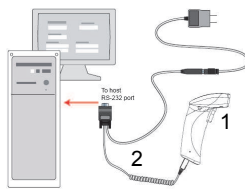
1	ID-08 Handheld Reader	ID-08-IM3-2-S*
	ID-09 Handheld Reader	ID-09-IM3-2-S*

### \*Remark:

The power supply is standardly included within the ID-08 and ID-09 serial models.

### RS-232 Installation

To power on the reader, plug the RS-232 cable into the reader's handle, plug the power supply into the AC outlet, plug the power supply cord into the barrel jack on the cable, and then connect the cable to the appropriate serial port on the host. The unit will beep twice and the LED will turn off. The reader will now be ready to use.



RS-232 Hardware



M0017\_01  
Reset to RS-232  
Factory Defaults



Test Symbol  
(ABCDEFGHIJKLMNOP)



M0166\_01  
Save  
Settings

## Step 3 — Install di-soric ID

di-soric ID Software is di-soric's configuration and testing software. Use di-soric ID to set up your ID-08 and ID-09 Handheld Reader. di-soric ID can be found on the di-soric Tools CD that is packaged with the reader.

1. Follow the prompts to install di-soric ID from the CD.
2. Click on the di-soric ID icon to run the program.



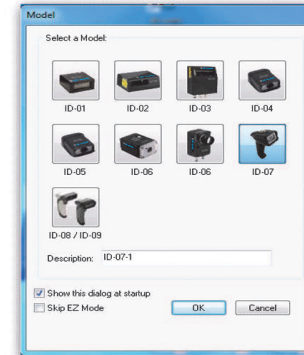
Note: di-soric ID can also be installed from the Download Center at [www.di-soric.com](http://www.di-soric.com).

### Minimum System Requirements

- 233 MHz Pentium processor
- Windows 7 (32-bit or 64-bit), Vista (32-bit or 64-bit), XP, or 2000
- Internet Explorer 6.0 or higher
- 128 MB RAM or greater
- 80 MB hard drive space
- 800 x 600 minimum 256 color display (1024 x 768 32-bit color recommended)

## Step 4 — Select Model

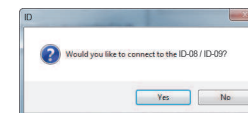
When you start di-soric ID, the following menu will appear:



1. Click the ID-08 / ID-09 button and then click OK. If you do not want to make this selection every time you start di-soric ID, uncheck "Show this dialog at startup". If you need to select another model later, click Switch Model at the top of the screen.

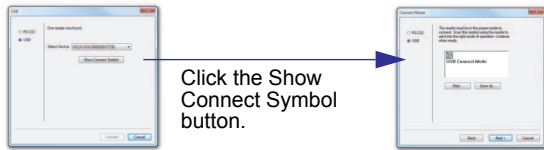
Note: You can also type a name of your choice in the Description text field and click OK.

2. Click Yes when this dialog appears:



## Step 5 — Select Interface

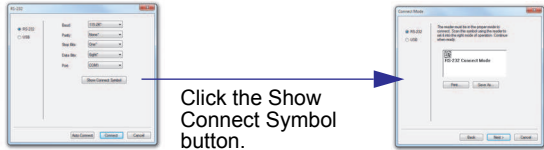
### USB



Click the Show Connect Symbol button.

1. Print and decode the USB Connect Mode symbol to ensure that you are in the correct communications mode. Keep the printed symbol in a convenient place for future use. Click Next when you are finished.
2. You will then see your reader's ID in the Select Device field. The Reader ID number should match the serial number next to the trigger under the optical head of the reader. Click Connect.

### RS-232



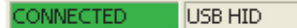
Click the Show Connect Symbol button.

Print and decode the RS-232 Connect Mode symbol and decode it with the reader to ensure that you are in the correct communications mode. Keep the printed symbol in a convenient place for future use. Be sure the correct communications port is selected. Click Next, and then Connect.

## Step 6 — Connect to di-soric ID

### USB

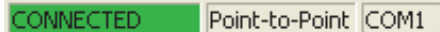
Once you have clicked Connect in the USB Select Device field, the **CONNECTED** message will appear in a green box in the status bar at the bottom right of the screen.



You are now ready to configure the USB ID-08 / ID-09 using di-soric ID.

### RS-232

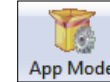
Once you have selected RS-232 settings and communications port and clicked Connect, the **CONNECTED** message will appear in a green box in the status bar at the bottom right of the screen.



You are now ready to configure the RS-232 ID-08 / ID-09 using di-soric ID.

## Step 7 — Configure the Reader

Click the App Mode button to make configuration changes.



The following modes are accessible by clicking the buttons in the first row of App Mode icons:



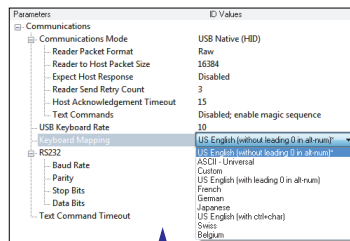
- Click the EZ Mode button to return to the EZ Mode view.
- Click the Autoconnect button to establish communication.
- Click the Send/Recv button to send or receive commands.
- Click the Switch Model button to open the model menu.
- Click the Parameters button to show the tabbed tree controls for Communication, Lesezyklus, Symbolologies, and I/O Parameters.
- Click the Imager button to capture and decode symbols and to use Window of Interest for Near Field and Far Field.
- Click the Terminal button to display decoded symbol data and to send serial commands to the reader using text or macros.
- Click the Utilities button to show the tabbed interfaces for Device Control, Differences from Default, Firmware, and Advanced settings.

For further details, see di-soric ID Help in the dropdown Help menu or refer to the *ID-08 / ID-09 Handheld Reader User's Manual*.

## Step 8 — Save Changes in di-soric ID

To make changes to a configuration setting:

1. Left-click on the + to expand the desired tree.
2. Double-click on the desired parameter and click once in the selection box to view options.
3. Place your cursor in the selection box, scroll down to the setting you want to change, and click once on the setting.
4. Left-click on the open screen to complete your selection.



5. Right-click on the open screen and select Save to Reader to implement the command in the reader.

- Send, No Save. Changes will be lost when power is re-applied to the reader.
- Send and Save. This activates all changes in current memory and saves to the reader for power-on.