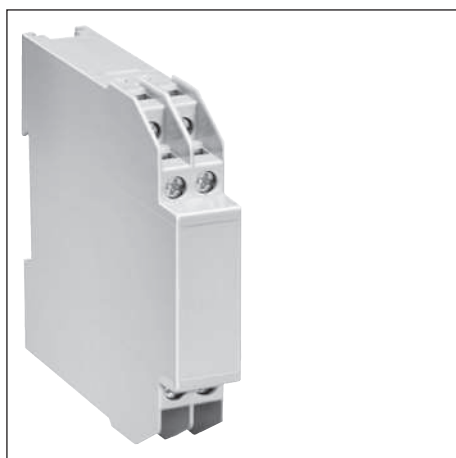
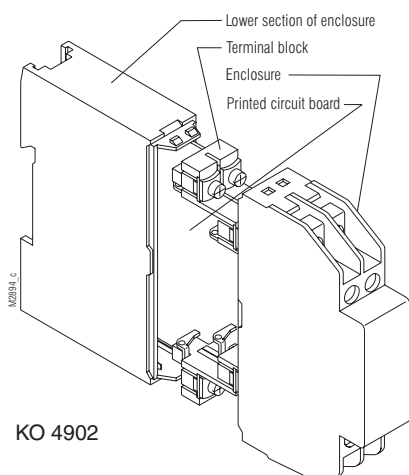
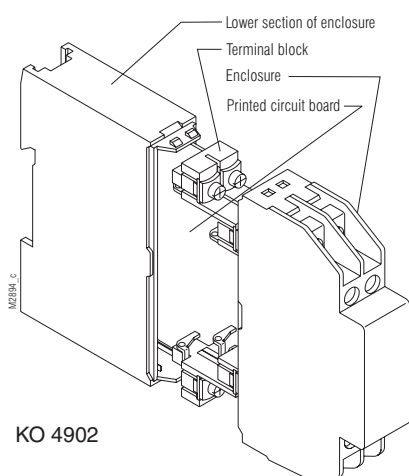


# Insulated Enclosure KO 4902

for surface mounting and mounting in cabinets,  
with flat terminals



- Width 17.5 mm
- Max. 8 plus-minus terminal screws with self-raising terminal washers
- Reliable connection of max. 2 wires even with different diameter
- Terminal blocks can be machine-soldered additional wire soldering is possible
- Housing supplied as single parts, terminals prefitted in terminal blocks



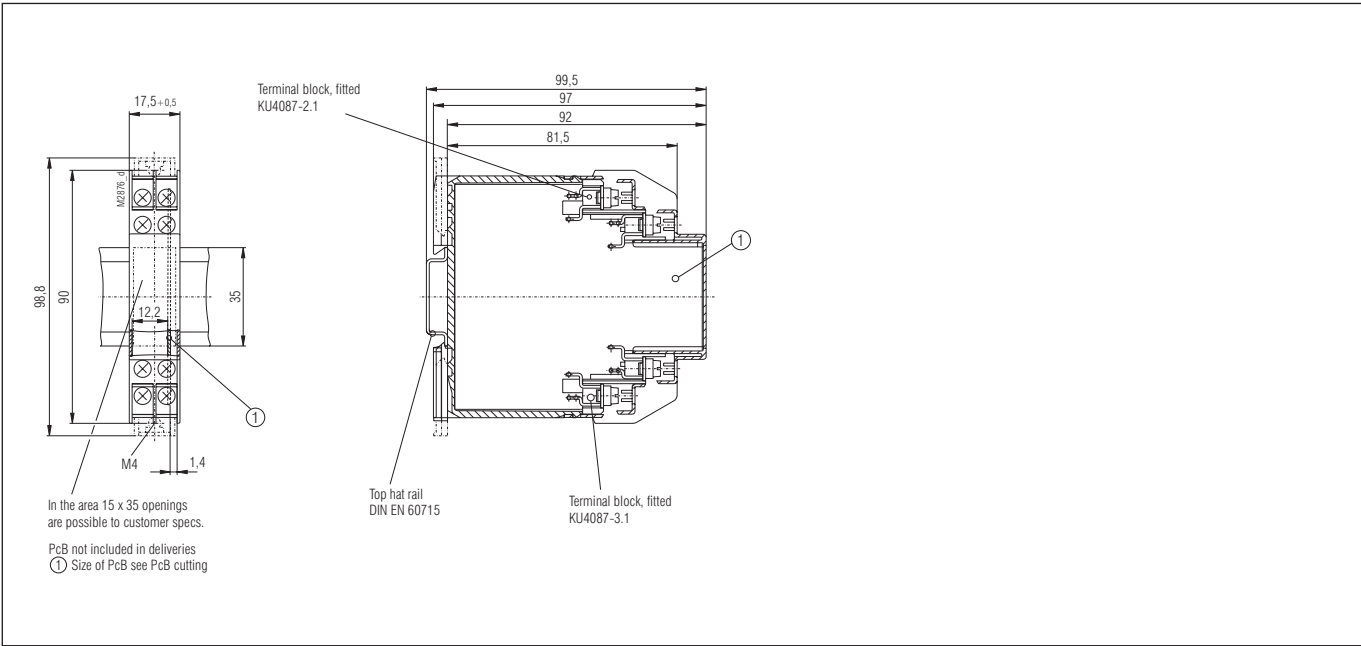
## Technical data

Order reference:	KO 4902.0049365		
<b>Outer dimensions:</b>	17.5 x 90 x 97 mm		
Enclosure material:	PC-GF, light gray RAL 7035		
Temperature stability:			
complying with UL 746 B:	125 °C		
complying with Vicat			
ISO 306 Meth. B:	148 °C		
compl. with ISO 75-2 Meth. A:	138 °C		
Meth. B:	144 °C		
Max. permitted power dissipation:	5.5 W for stand-alone enclosure at normal climate 23/50-1		ISO 554
Specific thermal resistance:	R <sub>th</sub> = 8 K / W for stand-alone enclosure		
Flame retardancy			
complying with UL 94:	V-0		
complying with IEC 60 707:	BH 2-30		
<b>Number of terminals:</b>	8, < 8 on request		
Terminal material:	Steel strip, tin-plated		
Max. cross section for connection:	2 x 2.5 mm <sup>2</sup> solid 2 x 1.5 mm <sup>2</sup> stranded ferruled min. Ø 0,1 mm solid		DIN 46 228-1/-2/-3/-4
Insulation of wires length:	9 - 10 mm		
Max. contact resistance to printed circuit board:	20 mΩ		
Max. current carrying capacity:	16 A, 40 A on request		
Wire fastening:	Captive plus-minus terminal screws (M3.5) with self-raising terminal washers Function complying with		IEC 60 999-1
Torque:	max. 0.8 Nm		
Inner connection:	Machine-solderable terminal pins for printed circuit board and soldering pin for strands		
<b>Enclosure fastener:</b>	1) Snap-on fastener on top hat rail 2) Screw fastening M4, grid 90 mm with second clip as accessory		EN 50 022
Creepage current resistance:	CTI 175 ≙ insulating material III a		IEC 60 664-1
<b>Air gap and creepage distances</b>			
Enclosure for vertical printed circuit board:	Air gap ≥ 4 mm Creepage distance ≥ 6.3 mm		IEC 60 664-1
Type of protection			
Enclosure:	IP 40		
Terminal opening:	IP 20		
	Contact protection complies with VBG 4		IEC 60 529
Print area:	17 x 44 mm		
<b>Printed circuit board:</b>	See Printed circuit board design		
Printed circuit board holder:	Guide ribs		
Component installation height for a vertical printed circuit board			
on component side:	≤ 12.2 mm or 11.6 mm		
on soldering side:	≤ 2.0 mm or 1.4 mm (see Printed circuit board design)		
Net weight:	72 g		
<b>Accessories:</b>			
ET 4086-0-2.1	Second clip for screw fastening		
KU 4089-0-2:	Blanking plug for enclosure base		
KU 4089-3-4	Blanking plug for terminal block		
KU 4087-1-1	Dummy terminal block for vertical PCB		

All specifications correspond to the technology used at time of publication.

We reserve the right to make improvements and changes of a technical nature at any time.

## Dimension drawings



## Printed circuit board design

