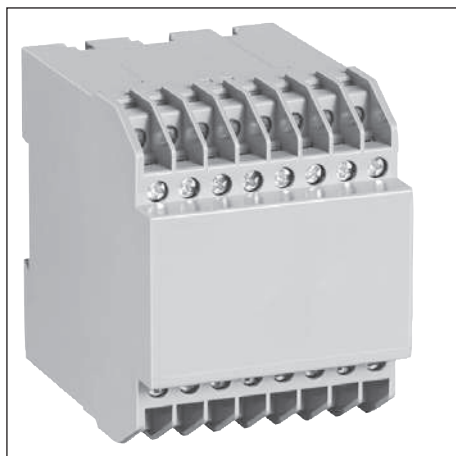
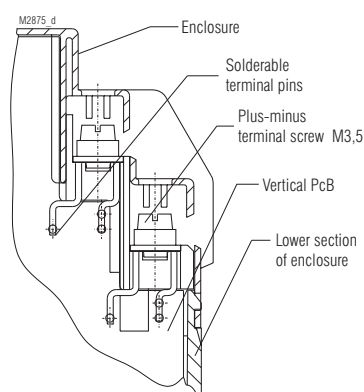


Insulated Enclosure KO 4904

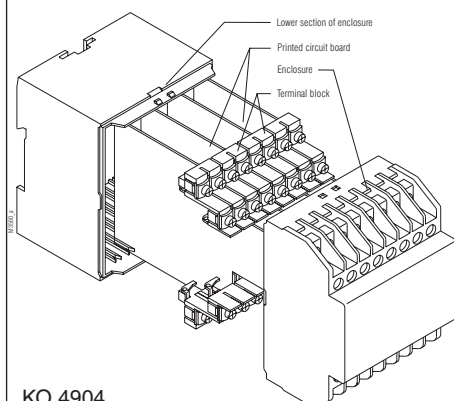
for surface mounting and mounting in cabinets,
with flat terminals



- Width 70 mm
- Max. 32 plus-minus-terminal screws with self-raising terminal washers
- Reliable connection of max. 2 wires even with different diameter
- Terminal blocks can be machine-soldered additional wire soldering is possible
- Housing supplied as single parts, terminals prefitted in terminal blocks



Flat terminals for solder connection

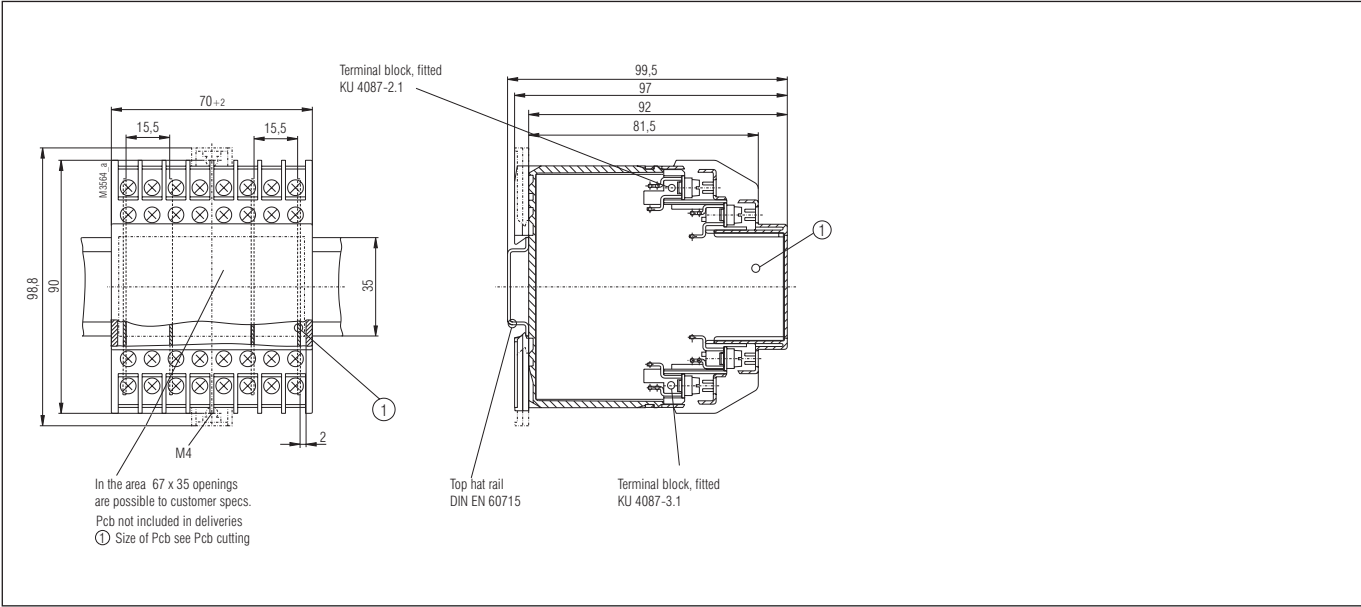


KO 4904

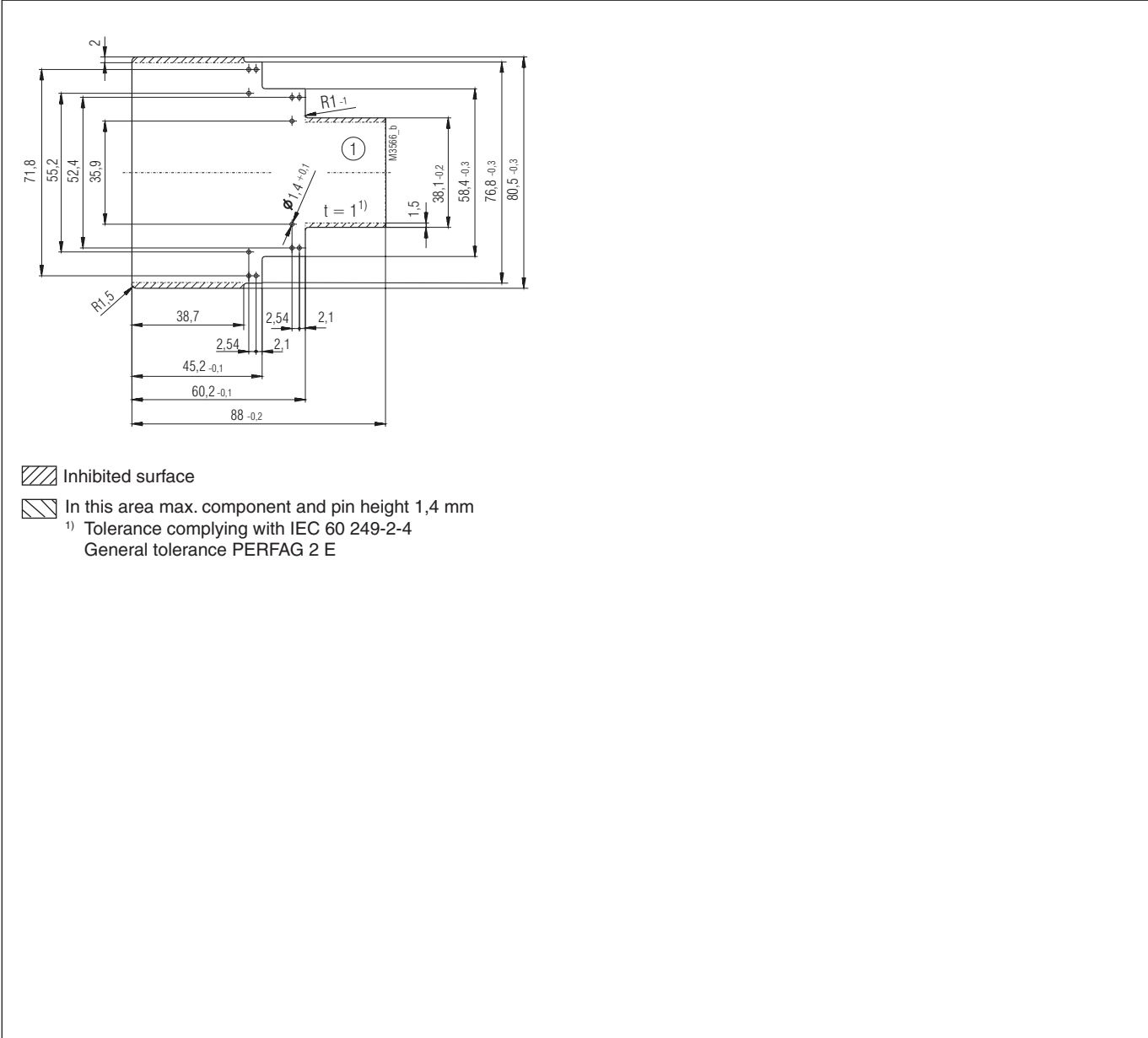
Technical Data

Order reference:	KO 4904.0049934		
Outer dimensions:	70 x 90 x 97 mm		
Enclosure material:	PC-GF, light grey RAL 7035		
Temperature stability:			
complying with UL 746 B:	125 °C		
complying with Vicat			
ISO 306	Meth. B:	148 °C	
compl. with ISO 75-2	Meth. A:	138 °C	
	Meth. B:	144 °C	
Max. permitted power dissipation:	14 W for stand-alone enclosure at normal climate 23/50-1		ISO 554
specific thermal resistance:	R _{th} = 4 K / W for stand-alone enclosure		
Flame retardancy	V-0		
complying with UL 94:	BH 2-30		
complying with IEC 60 707:			
Number of terminals:	32, < 32 on request		
Terminal material:	Steel strip, tin-plated		
Max. cross section for connection:	2 x 2.5 mm ² solid 2 x 1.5 mm ² stranded ferruled min. Ø 0.1 mm solid		DIN 46 228-1/-2/-3/-4
Insulation of wires length:	9 - 10 mm		
Max. contact resistance to printed circuit board:	20 mΩ		
Max. current carrying capacity:	16 A, 40 A on request		
Wire fastening:	Captive plus-minus-terminal screws M3.5 with self raising terminal washers Function complying with		IEC 60 999-1
Torque:	max. 0.8 Nm		
Inner connection:	Machine-solderable terminal pins for printed circuit board and soldering pin for strands		
Housing fastener:	1) Snap-on fastener on top hat rail 2) Screw fastening M4, grid 90 mm with second clip as accessory		EN 50 022
Creepage current resistance:	CTI 175 ≙ insulated material III a		IEC 60 664-1
Air gap and creepage distances			
Housing for vertical printed circuit board:	Air gap ≥ 4 mm Creepage distance ≥ 6.3 mm		IEC 60 664-1
Type of protection			
Enclosure:	IP 40		IEC 60 529
Terminals:	IP 20		
	Contact protection complies with VBG 4		
Print area:	70 x 44 mm		
Printed circuit board:	See Printed circuit board design		
Printed circuit board holder:	Guide ribs		
Component installation height for a vertical printed circuit board			
on component side:	≤ 63 mm		
on soldering side:	≤ 3.0 mm		
Net weight:	200 g		
Accessories:			
ET 4086-0-2:	Second clip for screw fastening		
KU 4087-0-2:	Blanking plug for enclosure base		
KU 4089-3-4:	Blanking plug for terminal block		
KU 4087-1-1:	Dummy terminal block for vertical PCB		

Dimensions



Printed circuit board design



1)