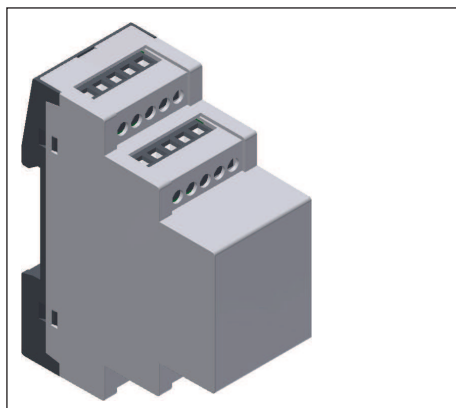


# Insulated Enclosures KU 4188

to DIN 43 880 for installation in distribution cabinets  
70 mm depth



## Your Advantages

- Modular and flexible
- Plenty of space
- Variable connection system
- Can be specifically tailored to customer requirements

## Features

- Module widths 35 mm
- Nominal depth 64 mm for overall panel depth maximum 70 mm to DIN 43 880
- Selectable enclosure configurations
  - without terminal
  - with printed circuit board terminals
  - with plug in screw terminals
  - with plug in cage clamp terminals
  - with box terminals
  - with various terminal combinations
- Suited for the accommodation of up to two horizontal PCBs with terminals and additional PCB for display and control or elements in the housing front; optionally for the accommodation of up to 4 vertical PCBs with terminals
- Enclosure openings for connection terminals, control elements and bus connectors KNX and RJ45 on request
- Base plates available with side walls for mounting of PCB assemblies

## Technical Data

Order reference:	Standard	UL
Closed:	0061102	0066501
PCB terminal:	0060120	0066503
Plug in screw terminal:	0060121	0066502
Plug in cage clamp terminal:		0066623
Box terminal:	0060292	0066504

**External dimensions:** 35 x 90 x 71

Enclosure material	
Cover:	PC-GF, PC (UL) light grey RAL 7035
Base plate:	PC-GF, PC (UL) dark black RAL 9005,
Terminal block:	PC-GF, PA66/6 (UL)
Connection board:	PA66 (UL)

Temperature stability	PC-GF	(UL) PC	(UL) PA 66/6	(UL) PA 66
complying with UL 746 B:	115 °C	115 °C	120 °C	150 °C
complying with Vicat ISO 306				
Meth. B:	145 °C	146 °C	230 °C	245 °C
compl. with ISO 75-2 ( 1.8 MPa):	136 °C	123 °C	225 °C	120 °C
(0.45 MPa):	142 °C	142 °C	235 °C	231 °C

Max. permitted power dissipation: 7 W for stand-alone enclosure at normal climate 23/50-1 ISO 554

Specific thermal resistance:  $R_{th} = 15 \text{ K / W}$

Flame retardancy  
complying with UL 94: All Enclosure materials: V-0  
Exception: PA66 (UL), irradiated: HB

Number of terminals: Each 20 plug in terminals and printed circuit board terminals; 16 box terminals; less on request

**Enclosure fastener:** Snap-on fastener on top hat rail EN 60 715

Creepage current resistance IEC 60 112  
 PC-GF: CTI 175  $\cong$  insulated material III a  
 PC: CTI 225  $\cong$  insulated material III a  
 PA66/6: CTI 550  $\cong$  insulated material I  
 PA66: CTI 600  $\cong$  insulated material 0

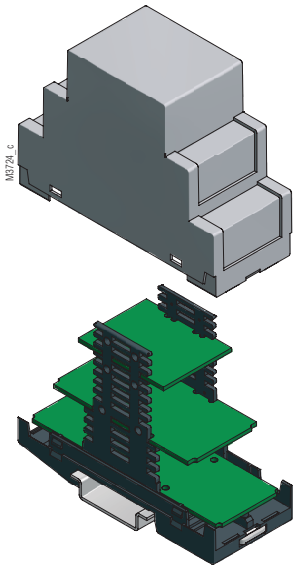
Type of protection: Enclosure IP 40 IEC 60 529  
 Base plate IP 30  
 (connector cut outs IP 20)

Print area: 33.5 x 41.5 mm

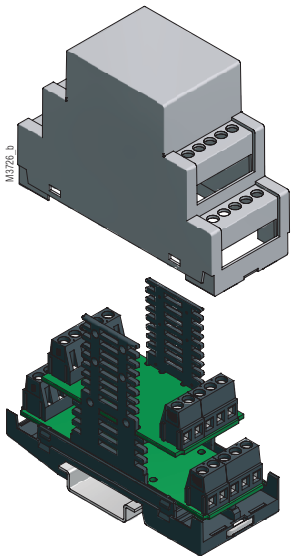
**Print circuit board:** See printed circuit board design  
 Printed circuit board mounting  
 horizontal: Fixed to the base by screws and / or by the side walls  
 vertical: Guides in base and terminal plate

**More information see  
brochure  
Terminal overview GE02**

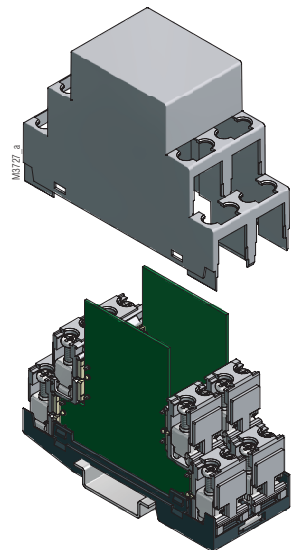
## Exploded view



closed

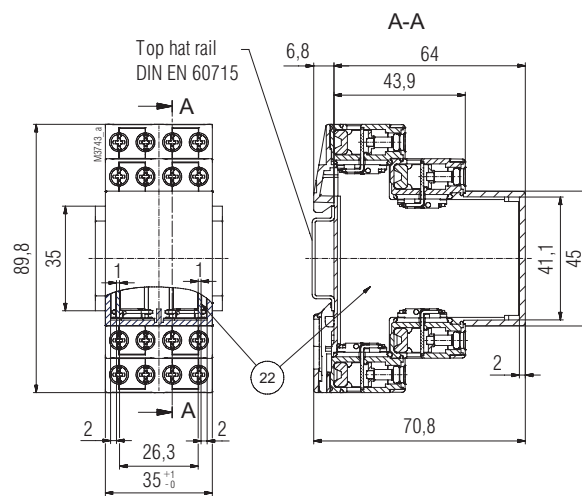
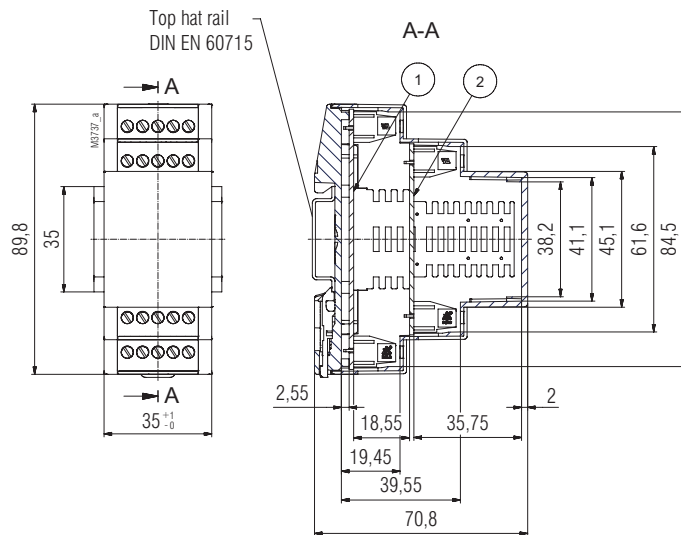
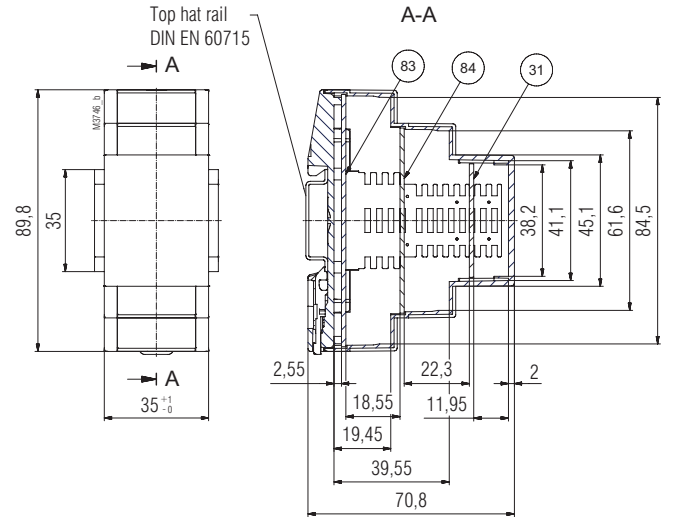


printed circuit board terminal

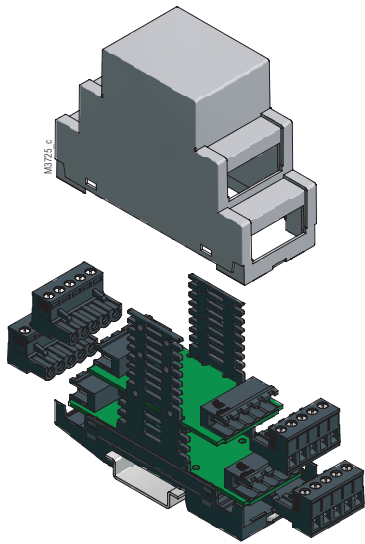


box terminal

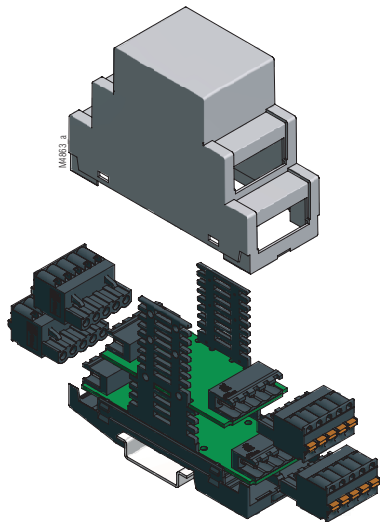
## Dimensions



## Exploded view

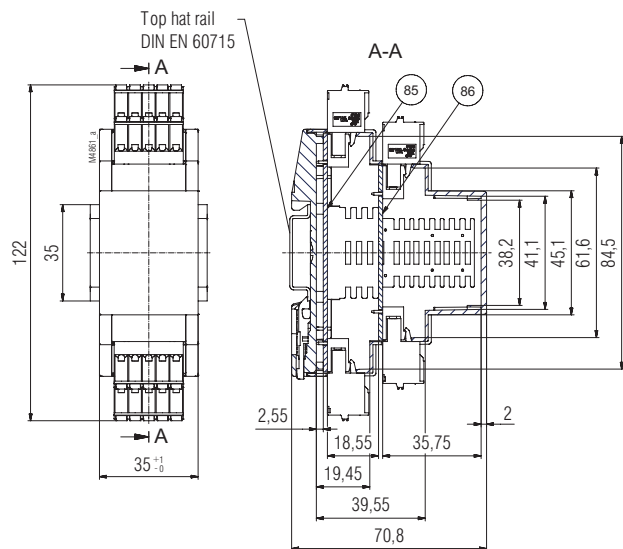
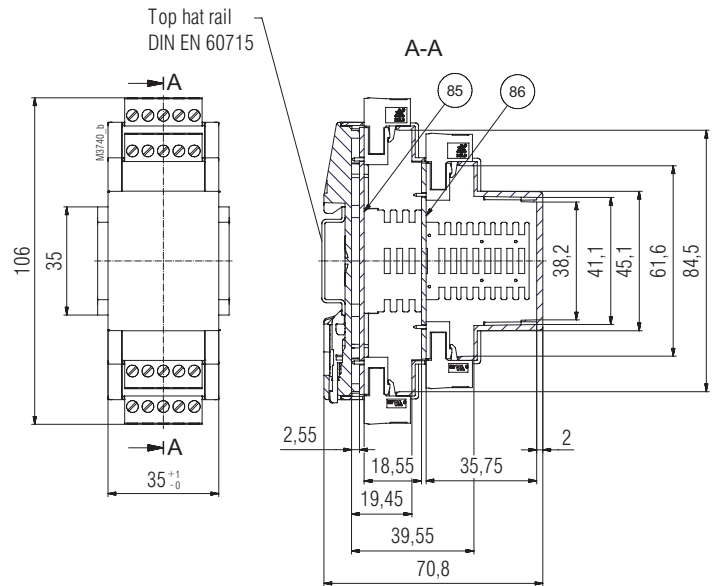


plug in screw terminal

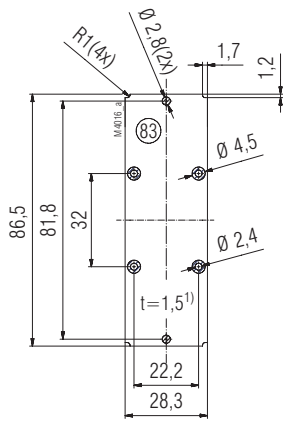


plug in cage clamp terminal

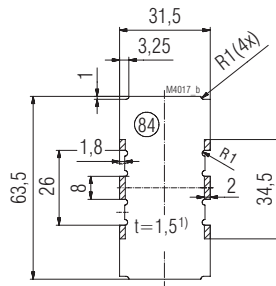
## Dimensions



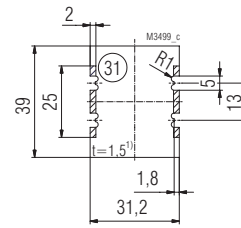
# Printed circuit board design



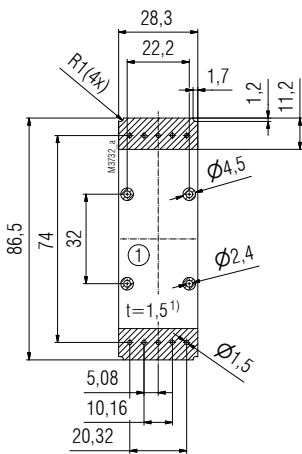
PCB in PCB-position Bottom for closed res. milled enclosure



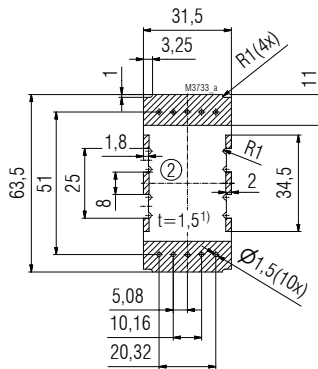
PCB in PCB-position Middle for closed res. milled enclosure



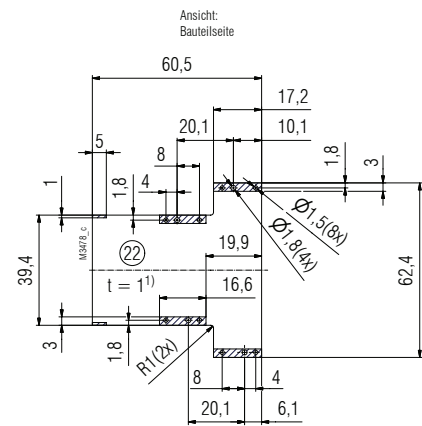
PCB in PCB-position Front for closed res. milled enclosure



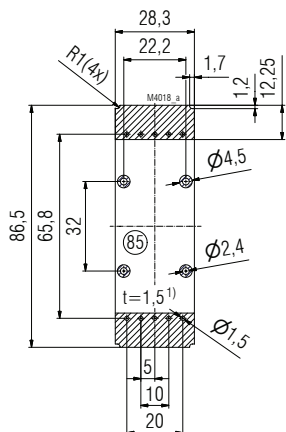
PCB in PCB-position Bottom for 2 x 5-pole PCB terminals



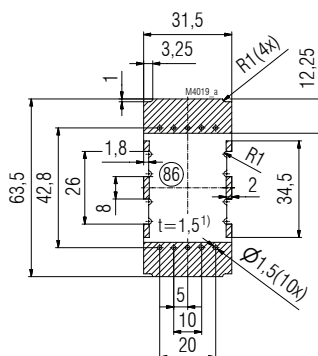
PCB in PCB-position Middle for 2 x 5-pole PCB terminals



with 4 x 2-poles box terminals RM 8.9 mm



PCB in PCB-position Bottom for 2 x 5-pole contact tag row (plug in screw terminals e.g. plug in cage clamp terminals)



PCB in PCB-position Middle for 2 x 5-pole contact tag row (plug in screw terminals e.g. plug in cage clamp terminals)



1) Tolerance at DIN EN 60 249-2-4; General tolerance: PERFAG 2 E  
Holes Ø 2,4 on request for cylindrical screws ISO 1207 M2x4