

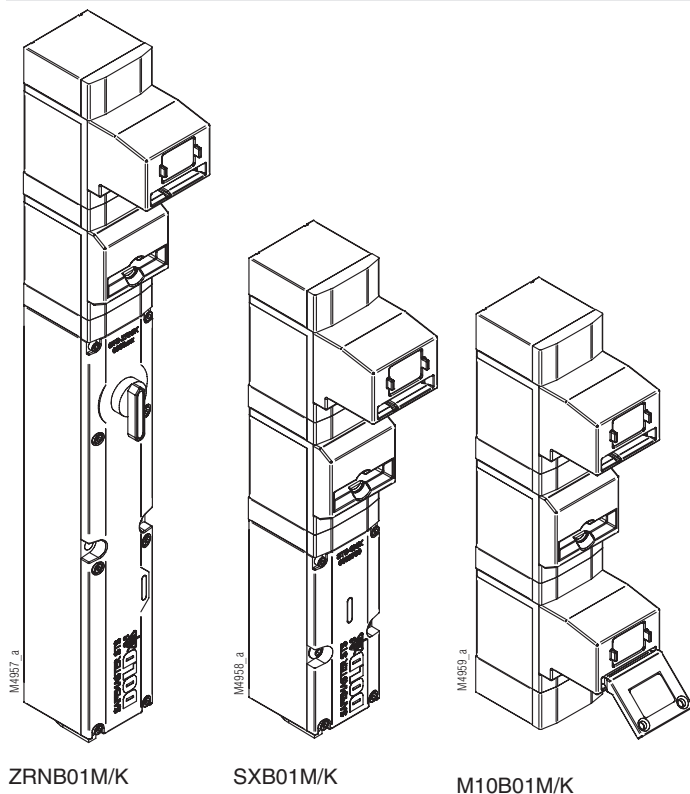
### STS/K-System Benefits

- EU-Test certificate according to the directive 2006/42/EG, annex IX
- For safety applications up to PL<sub>e</sub>/Category 4 according to EN/ISO 13849-1
- Modular and expandable system
- Rugged stainless steel and plastic design
- Wireless mechanical safeguarding
- Combines the benefits of safety switch, locking module and key transfer in a single system
- Easy installation through comprehensive accessories
- Protection against lock-in
- Coding level low, medium, high according to DIN EN ISO 14119:2014-03

### Features

- Actuator module with an insertion opening
- Module expansions possible below and above the module
- Choice of direction in 4 increments of 90°
- Can be coded
- This module is also available in stainless steel

### Installation Examples



### Approvals and Markings



### Application

The actuator modules B/K is assembled together with other modules into a STS/K unit and used in connection with an actuator. The actuator modules are then always part of the STS/K unit and connected with the stationary part of a separating guard while the actuator is mounted on the movable part of a separating guard.

The actuator modules can be installed in 4 positions on the STS/K unit, each turned by 90°.

In hostile ambient conditions stainless steel SAFEMASTER STS units have to be used!

### ATTENTION !



**Mechanical function modules can be installed above and/or below the key module!**

**Electrical modules can only be installed below the key module!**

### Design and Operation

The robust and flexible actuator module ensures safe access, for instance, to a guard or protective door.

The function of the actuator module is ensured only in combination with additional function modules, e.g. switch, door lock and/or key modules. The mechanical function modules can be installed both below and above actuator modules B/K. The switching and solenoid lock can only be installed below actuator modules B/K.

When securing separating guards it must be ensured then that hazardous movements when opening the movable part of the guard will be stopped. Actuator module B/K can transfer the release or locking of a protective door or hood mechanically. A door, for example, can thus be opened or kept closed.

Primary or secondary entries can be defined depending on the position of a B/K module in an STS/K unit or STS system. A primary access which is opened frequently, can be realised, for example with an SXB03M/K unit. The 3 keys of this unit may be used to operate secondary entries which are not used as frequently.

## Technical Data

Enclosure: PA + GF  
Internal parts and inserting slots: Stainless steel V4A / AISI 316 / AISI 630  
Ambient temperature: - 25 °C bis + 60 °C  
Application: only as part of a unit of the  
SAFEMASTER STS series

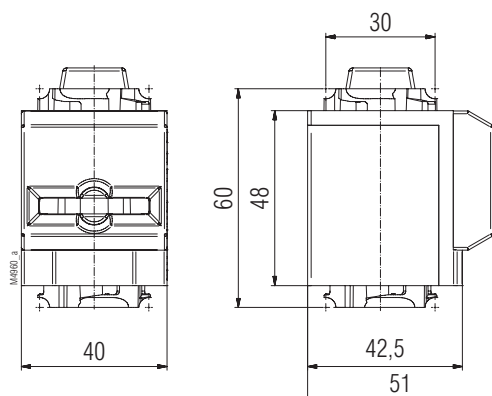
Coding level according to DIN EN ISO 14119:2014-03  
Actuator module B/K coding level low

### ATTENTION !

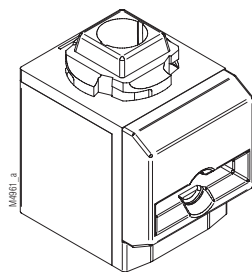


To avoid wrong usage (e.g. by overload, mounting position or usage in acid, alkaline or other hostile ambient conditions) the limitations of the product have to be observed. Please check in advance if your application requires the usage of the more robust stainless steel model of SAFEMASTER STS. The requirements of the mounting and operating instruction must be fulfilled.

## Dimension [mm]



Actuator module B/K



Actuator module B/K

## Ordering Designation

Actuator module B/K  
Article number: 0065891