

Technical Information

DeviceCare

Configuration of Endress+Hauser devices

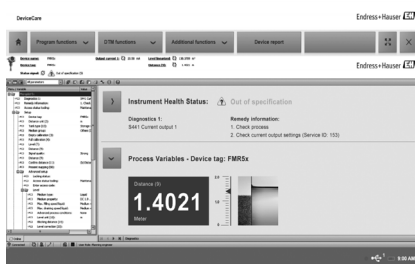
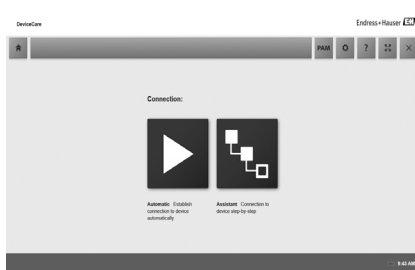
Configuration tool for HART, PROFIBUS, FOUNDATION fieldbus field devices

Application

DeviceCare is Endress+Hauser's tool for configuring Endress+Hauser devices. All intelligent devices in a plant can be configured using point-to-point or point-to-bus connection. By using status information, it also provides a simple but effective means of checking their health. DeviceCare is fast to install and easy to learn. Automatic functions and assistants guide the user easily. Its user-centered design menus allow a transparent and intuitive access to the field device.

Features and benefits

- Fast and easy installation
- One-click connection to devices
- Automated hardware identification and device driver catalog update
- Device configuration using DTMs (Device Type Manager)
- Multi-language support
- Touch-enabled for tablet use
- Integrated help, assistants and event messaging
- Supported communication protocols include HART, PROFIBUS DP/PA, FOUNDATION fieldbus, Modbus, CDI and Endress+Hauser Interfaces
- Supported hardware interfaces are modems (USB/RS232), TCP/IP, USB and PCMCIA



HART point-to-point connection

Fig. 1 shows a HART point-to-point connection using the FXA195 USB/HART modem. When connecting a FXA195 to your computer DeviceCare is able to automatically connect to the device.

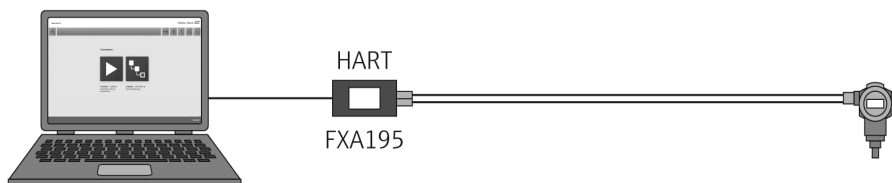


Fig. 1: Point-to-point connection with a HART field device

In order to establish HART communication, a minimum $250\ \Omega$ resistor must be inserted in the circuit. The way in which this is done depends upon the system architecture and power source used. Please read the FXA195 instructions carefully.

PROFIBUS point-to-bus connection

Fig. 2 shows how to connect from PROFIBUS DP to PROFIBUS PA via Siemens DP/PA Link or a Pepperl+Fuchs SK3 can be used.

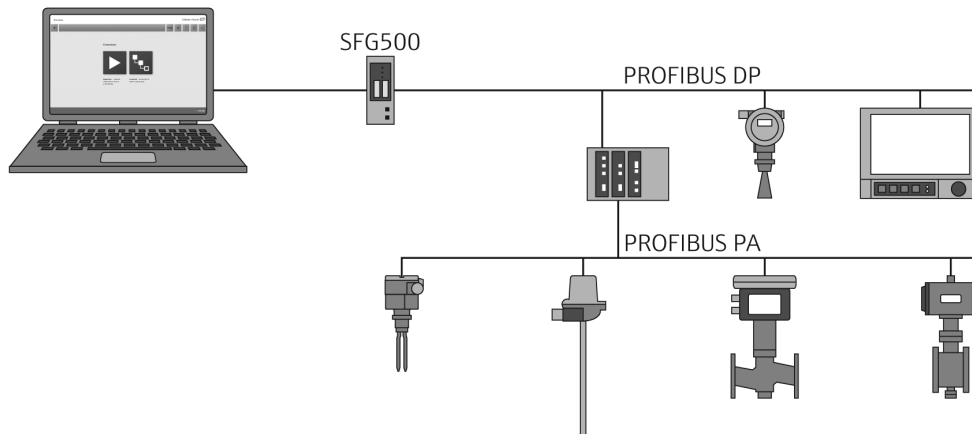


Fig. 2: PROFIBUS point-to-bus connection

CDI point-to-point connection

Fig. 3 shows a CDI point-to-point connection using the FXA291 modem. When connecting a FXA291 to your computer DeviceCare is able to automatically connect to the device.

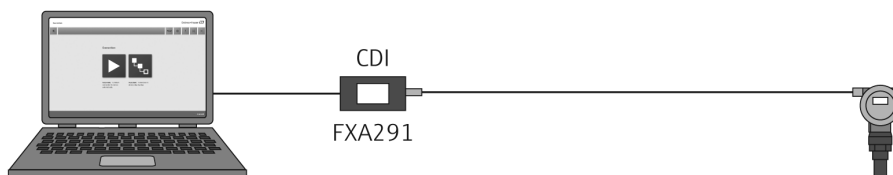


Fig. 3: CDI point-to-point connection with a device

System Requirements

Operating system	Version	End of Microsoft support	DeviceCare support status
	Windows 7 Professional SP1 (x32+x64)	January 2015	OK
	Windows 7 Ultimate SP1 (x32+x64)	January 2015	OK
	Windows 7 Enterprise SP1 (x32+x64)	January 2015	OK
	Windows 8.1	January 2023	OK
	Windows 8.1 Professional	January 2023	OK
	Windows 8.1 Enterprise	January 2023	OK

Date defines the end of the standard support, an additional Microsoft extended support of five years is possible.

Hardware	Item	Recommended
	Processor type	Pentium IV 3 GHz CPU AMD 3 GHz CPU
	Main memory (RAM)	2048 MB RAM
	Hard disk capacity needed	approx. 600 MB
	Monitor resolution	1280 x 768, 64 000 colors

Software required
Microsoft .Net 3.5
Microsoft .Net 4.x
PDF Reader

Software installed
DeviceCare
USB drivers
CommDTMs
Microsoft .Net 3.5

NOTE!

- Endress+Hauser SFG500 and SWA70 DTMs to be installed additionally.
- DeviceDTMs for your devices have to be selected and installed by the user.
- To save device reports as PDF a PDF printer has to be installed.
- DTM for Siemens DP/PA link to be installed additionally.

Documentation

Field of Activity Plant Asset Management
Field of Activity FA00024S/04/EN

Innovation DeviceCare
Innovation IN01047S/04/EN

Competence Brochure FieldCare
Competence Brochure CP00001S/04/EN

Operating Instructions FieldCare
Getting Started BA00027S/04/A2 FieldCare
Tutorial for FieldCare projects
BA00065S/04/EN

www.addresses.endress.com
