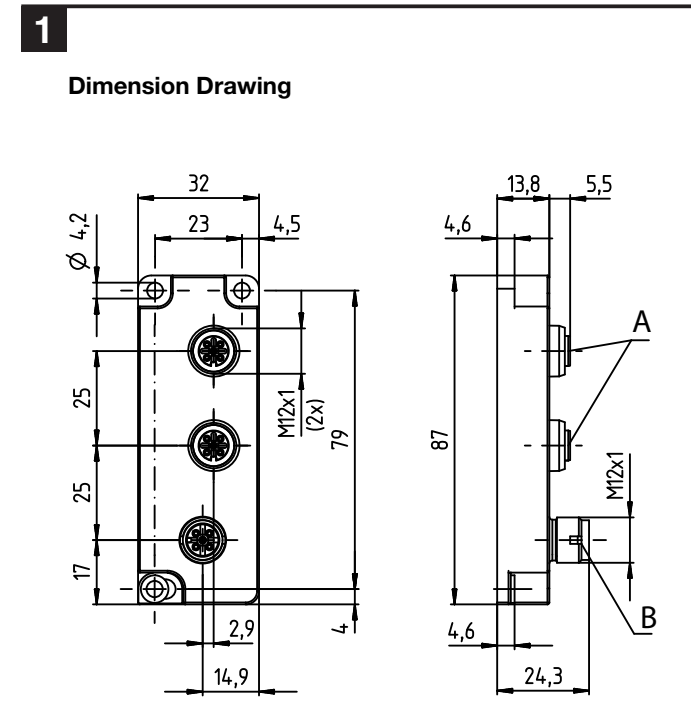
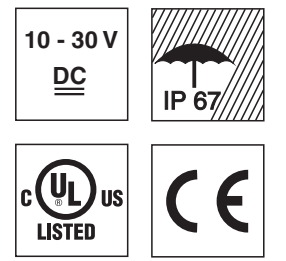
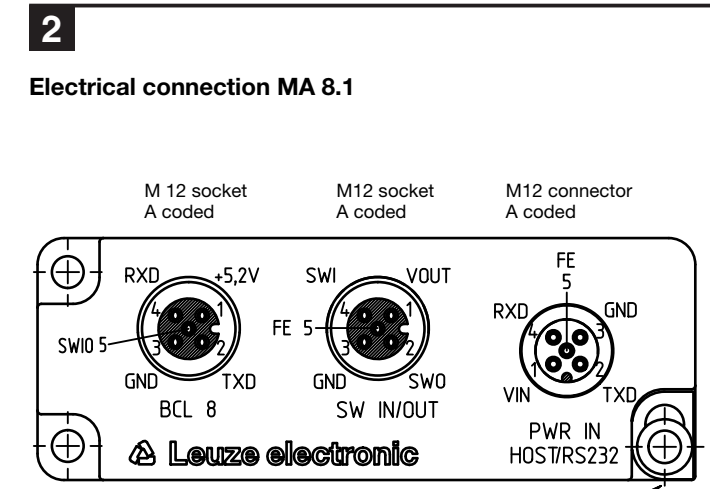


MA 8-xx Anschlusseinheit für BCL 8 / BPS 8  
 MA 8-xx Connector unit for BCL 8 / BPS 8  
 MA 8-xx Unité de branchement pour BCL 8 / BPS 8  
 MA 8-xx Unità di collegamento per BCL 8 / BPS 8  
 MA 8-xx Unidad de conexión para BCL 8 / BPS 8  
 MA 8-xx Unidade de conexão para BCL 8 / BPS 8

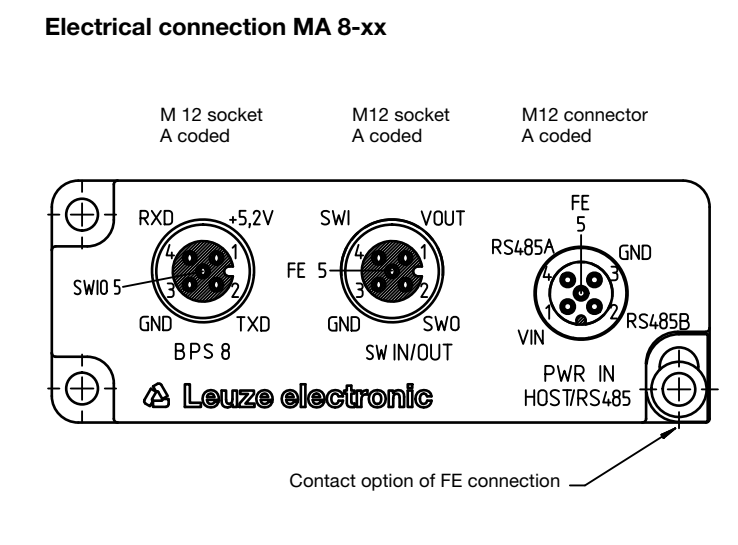
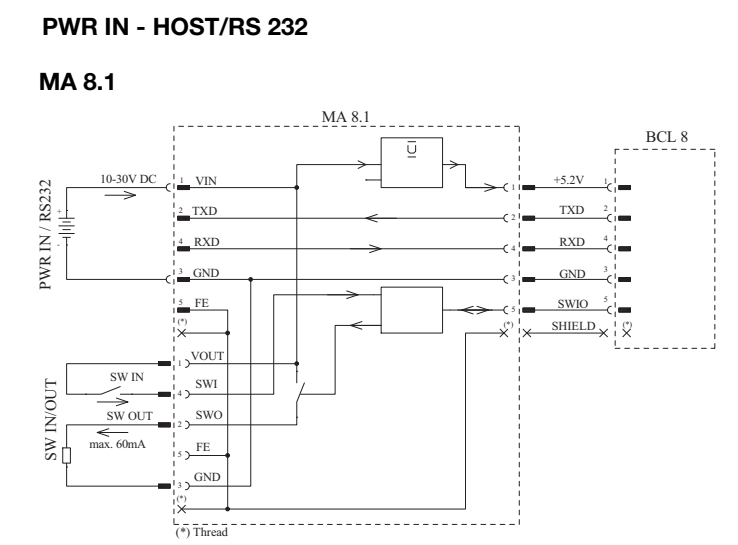
MA 8-01  
 MA 8-02  
 MA 8-X1  
 MA 8-X2  
 MA 8.1



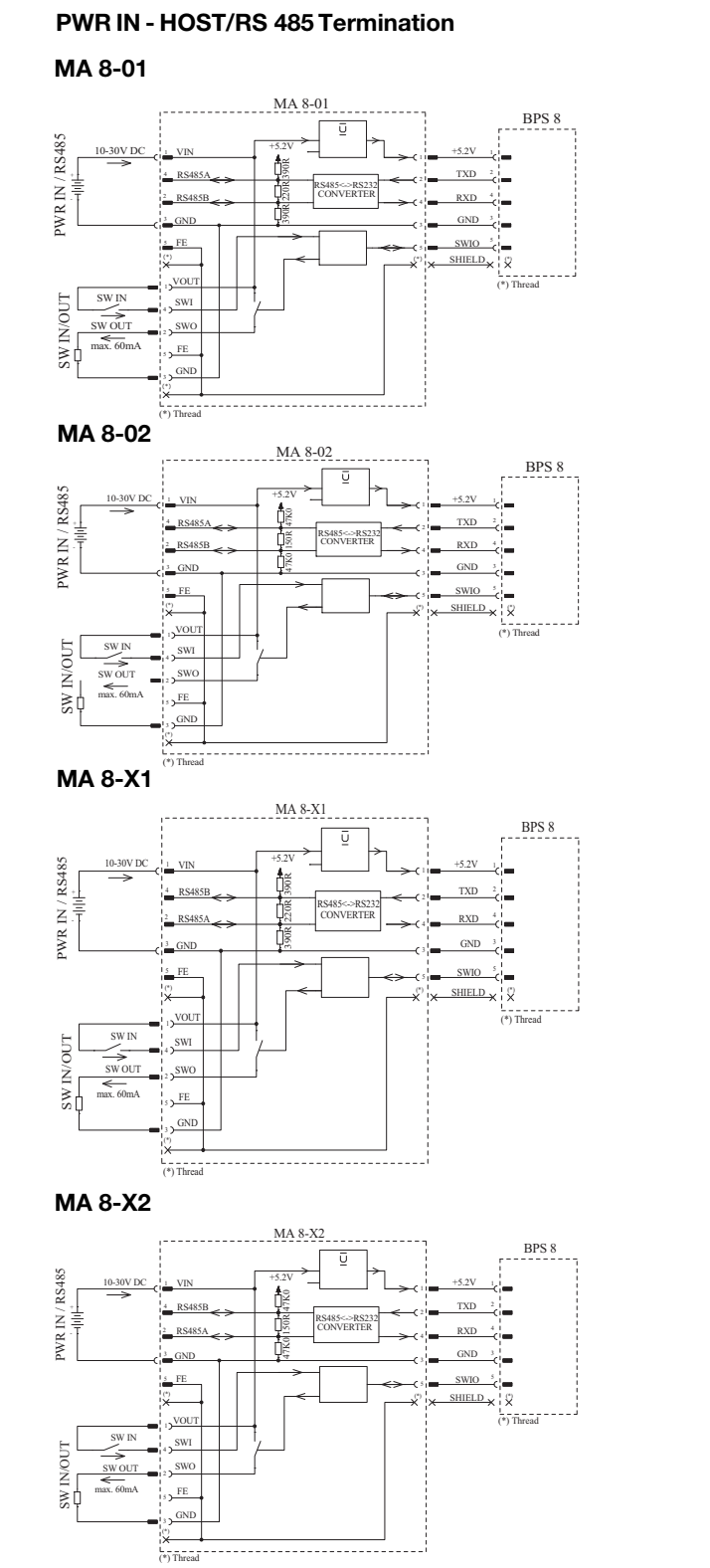
A 5-pin socket  
 B 5-pin plug



PWR IN - HOST/	Pin	Signal	Signal
	1	Supply voltage	10 ... 30 VDC
	2	RS 232/TxD	Data from the BCL 8 to the host
	3	TxD	
	4	RS 232/RxD	Data to the BCL 8 from the host
	5	FE	Functional earth
Metal flange		FE	Functional earth
SW IN/OUT	Pin	Signal	Signal
	1	Sensor/actuator supply voltage	10 ... 30VDC, coupled to supply voltage
	2	SWOUT	Switching output, max. 60mA
	3	GND	
	4	SWIN	Switching input, 10 ... 30V
	5	FE	Functional earth
Metal flange		FE	Functional earth
BCL	Pin	Signal	Signal
	1	BCL 8 supply voltage	4,75 ... 5,5VDC
	2	RS 232/TxD	Data from the BCL 8 to the host
	3	GND	
	4	RS 232/RxD	Data from the host to the BCL 8
	5	SWIN/SWOUT	Programmable switching input/output of the BCL 8
Metal flange		FE	Functional earth



PWR IN - HOST/	Pin	Signal	Signal
	1	Supply voltage	10 ... 30VDC
	2	RS 485 B (N)	Data to and from the BPS 8, pin 2 and 4 crossed on MA 8-X1/-X2
	3	GND	
	4	RS 485 A (P)	Data to and from the BPS 8, pin 2 and 4 crossed on MA 8-X1/-X2
	5	FE	Functional earth
Metal flange		FE	Functional earth
SW IN/OUT	Pin	Signal	Signal
	1	Sensor/actuator supply voltage	10 ... 30VDC, coupled to supply voltage
	2	SWOUT	Switching output, max. 60mA
	3	GND	
	4	SWIN	Switching input, 10 ... 30V
	5	FE	Functional earth
Metal flange		FE	Functional earth
BPS	Pin	Signal	Signal
	1	BPS 8 supply voltage	4,9 ... 5,4VDC
	2	RS 232/TxD	Data from the BPS 8 to the host
	3	GND	
	4	RS 232/RxD	Data from the host to the BPS 8
	5	SWIN/SWOUT	Programmable switching input/output of the BPS 8
Metal flange		FE	Functional earth



Technische Daten	Specifications	Caractéristiques techniques	Dati tecnici	Datos técnicos	Dados técnicos
Betriebsspannung U <sub>B</sub>	Operating voltage U <sub>B</sub>	Tension d'alimentation U <sub>N</sub>	Tensione di esercizio U <sub>B</sub>	Alimentación U <sub>B</sub>	Tensão de operação U <sub>B</sub>
Leistungsaufnahme	Power consumption	Consumation	Potenza assorbita	Absorción de potencia	Consumo
Gehäuse	Housing	Boîtier	Alloggiamento	Carcasa	Invólucro
Schutzart	Protection class	Indice de protection	Grado di protezione	Índice de protección	Tipo de proteção
Abmessungen	Dimensions	Dimensions	Dimensioni	Dimensiones	Dimensões
Gewicht	Weight	Poids	Peso	Peso	Peso
Anschlussart	Connection type	Raccordement électrique	Tipo di collegamento	Tipo de conexión	Tipo de conexão
Umgebungstemperatur (Betrieb/Lager)	Ambient temperature (operation / storage)	Température ambiante (utilisation / stockage)	Temp. ambiente (esercizio/magazzino)	Temp. ambiental (operación/almacén)	Temperatura ambiente (operação / estoque)
Luftfeuchtigkeit	Air humidity	Humidité de l'air	Umidità dell'aria	Humedad atmosférica	Umidade do ar
Vibration	Vibrations	Vibrations	Vibrazione	Vibração	Vibração
Elektromagnetische Verträglichkeit	Electromagnetic compatibility	Compatibilité électromagnétique	Compatibilità elettromagnetica	Compatibilidad electromagnética	Compatibilidade eletromagnética
Konformität	Conformity	Conformité	Conformità	Conformidad	Conformidade

