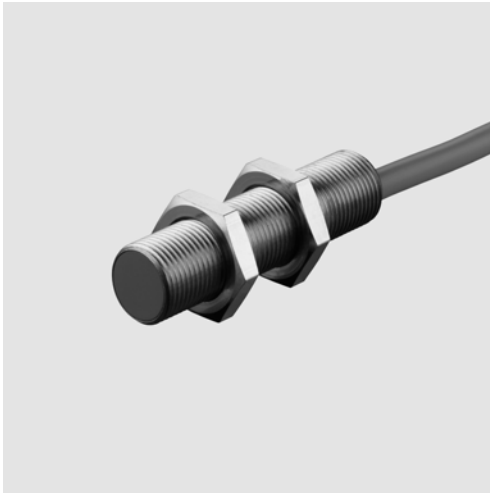
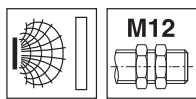
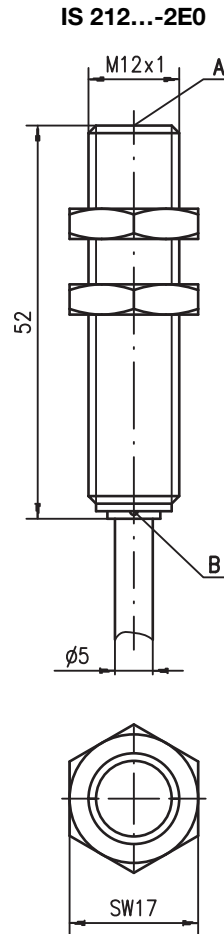


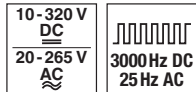
en 01-2015/01 50128373



**Dimensioned drawing**



**2mm**



**Embedded**

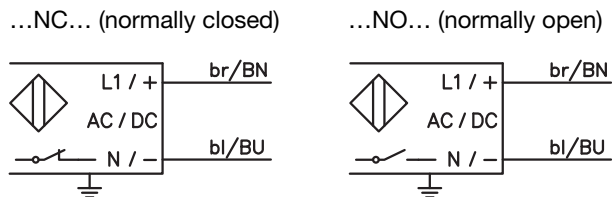
- Slim and short cylindrical metal housing M12
- Chromium-plated brass housing
- Built-in short circuit protection, inductive protection and polarity reversal protection
- LED for switching state visible from 360°
- Non-polarized 2-wire design
- AC/DC supply voltage



**Tightening torque of the fastening nuts < 10Nm !**

- A** Active surface
- B** Yellow indicator diode

**Electrical connection**



We reserve the right to make changes • DS\_IS212E\_1N3\_en\_50128373.fm



**Accessories:**

(available separately)

- Mounting clamp (MC 012...)

**Specifications**

|                                  |  |
|----------------------------------|--|
| <b>General specifications</b>    | <b>IS 212...-2E0</b>   |
| Type of installation             | embedded installation  |
| Typ. operating range limit $S_n$ | 2.0mm  |
| Operating range $S_a$            | 0 ... 1.6mm  |
| <b>Electrical data</b>           |  |
| Operating voltage $U_B$ 1)       | 20 ... 265VAC / 10 ... 320VDC  |
| Residual ripple $\sigma$         | $\leq 20\%$ of $U_B$   |
| Output current $I_L$             | $\leq 200$ mA AC/DC  |
| Open-circuit current $I_0$       | $\leq 1$ mA  |
| Minimum load current $I_m$       | 2mA  |
| Switching output/function        | .../1NC.3... relay, NC contact   |
|                                  | .../1NO.3... relay, NO contact   |
| Voltage drop $U_d$               | $\leq 6$ V at 200mA  |
| Hysteresis H of $S_r$            | $\leq 20\%$  |
| Temperature drift of $S_r$       | $\leq 10\%$ 2)   |
| Repeatability                    | $\leq 0.5$ mm 3)   |
| <b>Timing</b>                    |  |
| Switching frequency f            | AC: 25Hz<br>DC: 3000Hz   |
| Delay before start-up            | $\leq 10$ ms   |
| <b>Indicators</b>                |  |
| Yellow LED (visible from 360°)   | switching state  |
| <b>Mechanical data</b>           |  |
| Housing                          | chromium-plated brass  |
| Standard measuring plate         | 12 x 12mm <sup>2</sup> , Fe360   |
| Active surface                   | PBTP   |
| Weight                           | approx. 95g  |
| Connection type                  | cable: 2m, PVC, 2 x 0.34mm <sup>2</sup> , $\varnothing$ 5.0mm  |
| <b>Environmental data</b>        |  |
| Ambient temperature              | -25°C ... +70°C  |
| Degree of protection             | IP 67  |
| Protective circuit 4)            | 1, 2, 3  |
| Standards applied                | IEC/EN 60947-5-2   |
| Electromagnetic compatibility    | IEC 60947-5-2 5kV<br>IEC 61000-4-2 Level 2 air 8kV (ESD)<br>IEC 61000-4-3 Level 3 10V/m (RFI)<br>IEC 61000-4-4 Level 3 2kV (Burst) |

- 1) Observe the safety regulations and installation instructions regarding power supply and wiring.
- 2) Over the entire operating temperature range
- 3) For  $U_B = 20 \dots 30$ VDC, ambient temperature  $T_a = 23^\circ\text{C} \pm 5^\circ\text{C}$
- 4) 1=polarity reversal protection, 2=short circuit protection, 3=inductive protection for all outputs

**Part number code**

I S 2 1 2 M M / 1 N O . 3 - 2 E 0

|   |  |
|---|--|
| <b>Operating principle / construction</b>       | IS Inductive switch / Standard                                     |
| <b>Series</b>                                   | 212 Series with M12 x 1 external thread                            |
| <b>Housing / thread</b>                         | MM Metal housing (active surface: plastic) / metric thread         |
| <b>Output function / Supply</b>                 | 1NO.3 Relay, NO contact / AC/DC<br>1NC.3 Relay, NC contact / AC/DC |
| <b>Measurement range / type of installation</b> | 2E0 Typ. operating range limit 2.0mm / embedded installation       |
| <b>Electrical connection</b>                    | N/A Cable, PVC, standard length 2000mm                             |

**Order guide**

The sensors listed here are preferred types; current information at [www.leuze.com](http://www.leuze.com).

|                               |                             |                 |
|-------------------------------|-----------------------------|-----------------|
| <b><math>S_n = 2</math>mm</b> | <b>Designation</b>          | <b>Part no.</b> |
|                               | IS 212 MM/1NC.3-2E0         | 50128149        |
|                               | IS 212 MM/1NO.3-2E0         | 50128150        |
|                               | Additional types on request |                 |

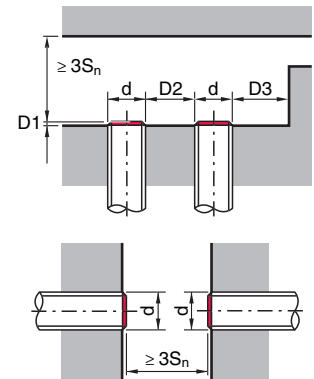
**Tables**

Reduction factors:  
for  $S_n = 2.0$ mm

|                 |      |
|-----------------|------|
| Steel Fe360     | 1    |
| Copper          | 0.20 |
| Aluminum        | 0.30 |
| Brass           | 0.40 |
| Stainless steel | 0.80 |

**Mounting**

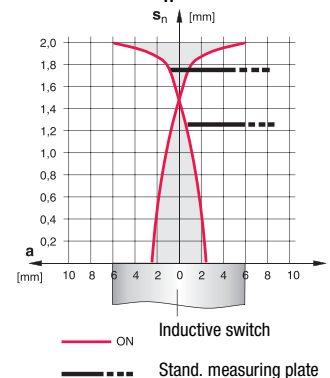
**Embedded installation:**



| Ferromagnetic and non-ferromagnetic materials |         |         |         |
|---|---------|---------|---------|
| $S_n$ [mm]                                    | D1 [mm] | D2 [mm] | D3 [mm] |
| 2.0   | 0       | 6.0     | 2.0     |

**Diagrams**

Models with  $S_n = 2.0$ mm



**Remarks**

**Operate in accordance with intended use!**

- ⚠ This product is not a safety sensor and is not intended as personnel protection.
- ⚠ The product may only be put into operation by competent persons.
- ⚠ Only use the product in accordance with the intended use.