

Technical data sheet - Actuator sensor interface

RJ45 panel connector



Identification	Type	M12-RJ45 F/F 180° 4/4 Cat.5e Profinet
	Part-No.	490106

Description	Control cabinet bushing M12 - RJ45 female/female 1:1 Cat 5e (Ethernet, Profinet)
--------------------	--

Technical data	
Nominal voltage	24 V
Nominal voltage range	50 V
Rated current	max. 1 A per contact
Pol number	4
Transfer rate	0,1 Gbit/s
Category	5e
Contact type	1 : 1
Coding	D
Shielding	360° shielding

General	
Form	RJ45 / M12 x 1
Pollution degree	3
Insulation resistance	≥100 MΩ

30.01.2017 – Subject to technical modification

Part-No. 490106

USA: LUTZE INC.

13330 South Ridge Drive • Charlotte, NC 28273, USA
Tel. +1 (704) 504-0222 • Fax +1 (704) 504-0223
www.lutze.com • info@lutze.com

United Kingdom: LÜTZE Ltd.

Unit 3, Sandy Hill Park
Sandy Way, Amington • GB-Tamworth, Staffs B77 4DU
Tel. +44 (0)1827 31333-0 • Fax +44 (0)1827 31333-2
www.lutze.com • sales.gb@lutze.co.uk

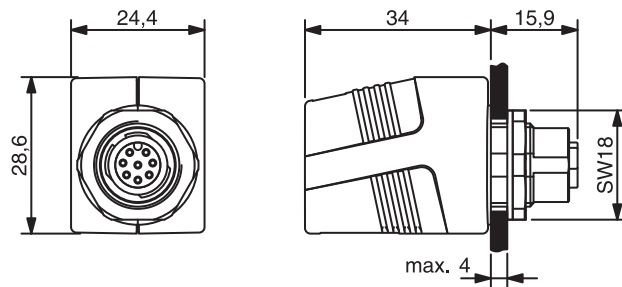


SYSTEMATIC TECHNOLOGY

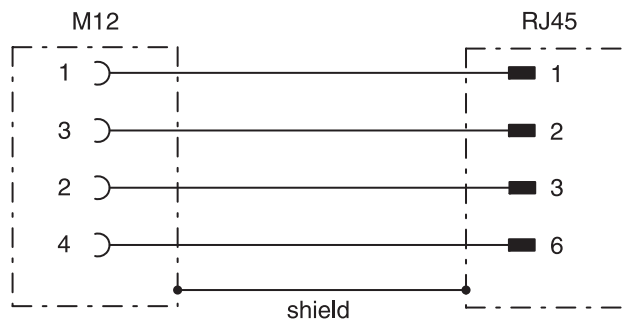
Technical data sheet · Actuator sensor interface

Contact resistance	≤30 mΩ
Class of flammability according to UL 94	V0
Protection class	IP 67 in screwed condition
Housing material	PA
Contact material	Phosphor bronze, gold-plated
Installation depth	approx. 70 mm
Storage temperature range	-25 °C ... 85 °C
Operation temperature range	-25 °C – 85 °C
Dimension	(?×D) 29.5 × 29 mm
Mechanical service life	≥ 750 insertion cycles
Weight (kg/piece)	0.037
PU	1

Dimensions



Circuit diagram



30.01.2017 – Subject to technical modification

Part-No. 490106

USA: LUTZE INC.

13330 South Ridge Drive · Charlotte, NC 28273, USA

Tel. +1 (704) 504-0222 · Fax +1 (704) 504-0223

www.lutze.com · info@lutze.com

United Kingdom: LÜTZE Ltd.

Unit 3, Sandy Hill Park

Sandy Way, Amington · GB-Tamworth, Staffs B77 4DU

Tel. +44 (0)1827 31333-0 · Fax +44 (0)1827 31333-2

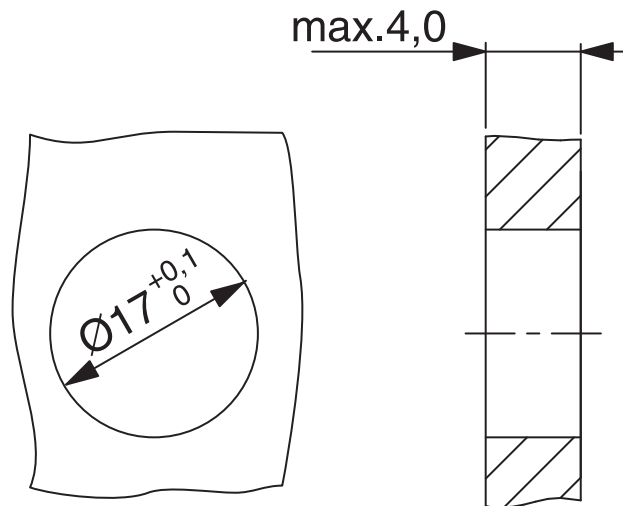
www.lutze.com · sales.gb@lutze.co.uk



SYSTEMATIC TECHNOLOGY

Technical data sheet - Actuator sensor interface

Mounting diagram



Accessories

Accessories	Article number	Type	PU
Protective cover M12	499994	SK M12	50

30.01.2017 – Subject to technical modification

Part-No. 490106

USA: LUTZE INC.

13330 South Ridge Drive • Charlotte, NC 28273, USA
Tel. +1 (704) 504-0222 • Fax +1 (704) 504-0223
www.lutze.com • info@lutze.com

United Kingdom: LÜTZE Ltd.

Unit 3, Sandy Hill Park
Sandy Way, Amington • GB-Tamworth, Staffs B77 4DU
Tel. +44 (0)1827 31333-0 • Fax +44 (0)1827 31333-2
www.lutze.com • sales.gb@lutze.co.uk