



| | | |
|--|---------------------------------|----------------------|
| Identification | Type | PM-RJ45 FOC SCRJ V14 |
| | Part-No. | 772137 |
| Description | | |
| | Cable gland FOC female / female | |
| | Version V14, push-pull | |
| | SCRJ, duplex, POF | |
| Technical data | | |
| Contact type | SCRJ to EN 50377-6-1 | |
| General | | |
| Form | V14 to IEC 61918; IEC 61784-5-3 | |
| Pollution degree | 2 | |
| Class of flammability according to UL 94 | V0 | |
| Protection class | 67 | |
| Housing material | PA-GF black | |
| Gasket | NBR | |
| Storage temperature range | -20 °C – 70 °C | |
| Operation temperature range | -20 °C – 70 °C | |
| Class of flammability according to UL 94 | V0 | |
| Dimensions (w × h × d) | 29.5 × 42.0 × 43.0 mm | |
| Mechanical service life | ≥ 500 insertion cycles | |

22.02.2014 – Subject to technical modification

Part-No. 772137

USA: LUTZE INC.

13330 South Ridge Drive • Charlotte, NC 28273, USA
 Tel. +1 (704) 504-0222 • Fax +1 (704) 504-0223
 www.lutze.com • info@lutze.com

United Kingdom: LÜTZE Ltd.

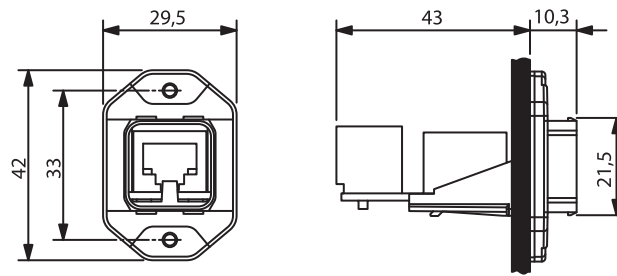
Unit 3, Sandy Hill Park
 Sandy Way, Amington • GB-Tamworth, Staffs B77 4DU
 Tel. +44 (0)1827 31333-0 • Fax +44 (0)1827 31333-2
 www.lutze.com • sales.gb@lutze.co.uk



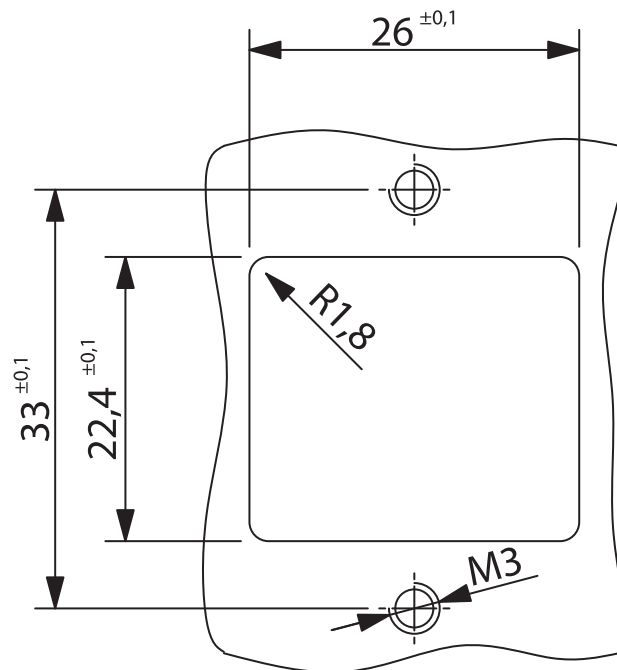
Technical data sheet · Interface Technology

Weight (kg/piece) 0.182
PU 1

Dimensions



Mounting diagram



Accessories

| Accessories | Article number | Type | PU |
|-------------|----------------|--------------------------------------|----|
| Patch cable | 772136.xxxx | FOC POF SCRJ V14 IP67 0.5 - 100 m | 1 |

22.02.2014 – Subject to technical modification

Part-No. 772137

USA: LUTZE INC.

13330 South Ridge Drive · Charlotte, NC 28273, USA
Tel. +1 (704) 504-0222 · Fax +1 (704) 504-0223
www.lutze.com · info@lutze.com

United Kingdom: LÜTZE Ltd.

Unit 3, Sandy Hill Park
Sandy Way, Amington · GB-Tamworth, Staffs B77 4DU
Tel. +44 (0)1827 31333-0 · Fax +44 (0)1827 31333-2
www.lutze.com · sales.gb@lutze.co.uk