

<b>Identification</b>	Type	LCOS-FGO-225-01/00/01-1
	Part-No.	780103.225.1
<b>Use/Application/Properties</b>		
Description	Function housing 22.5 mm, with cooling slits, closed front plate, connection opening top/bottom	
<b>General</b>		
Dimensions (w x h x d)	22.5 x 110.0 x 74.0 mm	
Material	Polyamid PA 6.6 (UL 94 V0, NFF I2, F2)	
Field installation	can be connected to function carrier	
Marking	2 x Labelling plates 5x5 mm	
<b>General ambient conditions</b>		
Operation temperature range	-40 °C – 85 °C	
Storage temperature range	-40 °C – 85 °C	
Relative humidity	5 % – 95 % without condensing	
Protection class	IP 20	
Low power loss	6 W @ 20°C, 3 W @ 60°C, 2 W @ 75°C	
<b>Standards</b>	Loads from pollutants IEC 60068-2-42, IEC 60068-2-43 Insulation coordination EN 60064-1, EN 60947-1, EN 50175, EN 50124-1 Shock resistance 15 G/11 ms, IEC 60068-2-27 Vibration resistance 4 G, IEC 60068-2-8	

03.04.2016 – Subject to technical modification

Part-No. 780103.225.1

USA: LUTZE INC.

13330 South Ridge Drive · Charlotte, NC 28273, USA  
Tel. +1 (704) 504-0222 · Fax +1 (704) 504-0223  
www.lutze.com · info@lutze.com

United Kingdom: LUTZE Ltd.

Unit 3, Sandy Hill Park  
Sandy Way, Amington · GB-Tamworth, Staffs B77 4DU  
Tel. +44 (0)1827 31333-0 · Fax +44 (0)1827 31333-2  
www.lutze.com · sales.gb@lutze.co.uk



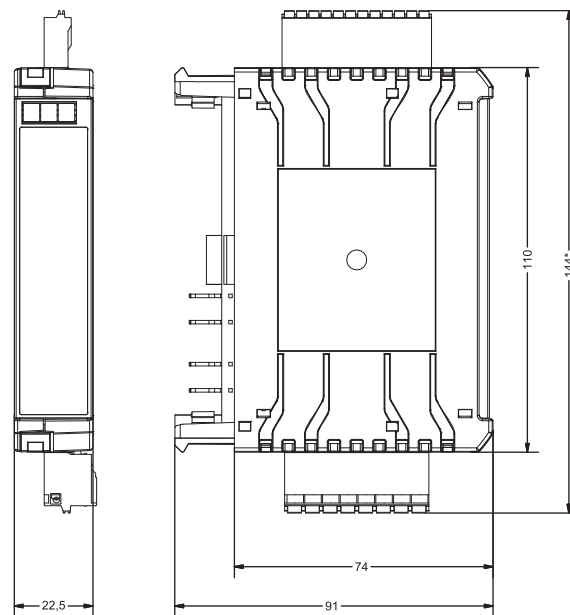
SYSTEMATIC TECHNOLOGY

# Technical data sheet · Modular housing system

Approvals

cURus

## Dimensions



## Accessories

Accessories	Article number	Type	PU
Function carrier 22.5 mm, can be expanded with modules with PE direct contact	780331.225.1	LCOS-FT-PE-225-00-03-1	1
Function carrier 22.5 mm, can be expanded with modules with PE direct contact	780331.225.2	LCOS-FT-PE-225-00-03-2	10
Labelling plates 5x5 mm, white, frame with 200 plates	780981.000.2	LCOS-ZB-BZS-white-00	10
Labelling plates 5x5 mm, red, frame with 200 plates	780982.000.2	LCOS-ZB-BZS-red-00	10
Labelling plates 5x5 mm, blue, frame with 200 plates	780983.000.2	LCOS-ZB-BZS-blue-00	10
plug-in terminal black, RM 5,08, 8-pin, 2,5 mm <sup>2</sup> , Push-in, 1-8 printed	780922.000.2	LCOS-ZB-KL-FS-500-25-8-black	10
Plug-in terminal black, RM 3,50, 12-polig, 1,5 mm <sup>2</sup> , Push-in, 1-12 printed	780921.000.2	LCOS-ZB-KL-FS-350-15-12-black	10

03.04.2016 – Subject to technical modification

Part-No. 780103.225.1

USA: LUTZE INC.

13330 South Ridge Drive · Charlotte, NC 28273, USA  
 Tel. +1 (704) 504-0222 · Fax +1 (704) 504-0223  
 www.lutze.com · info@lutze.com

United Kingdom: LUTZE Ltd.

Unit 3, Sandy Hill Park  
 Sandy Way, Amington · GB-Tamworth, Staffs B77 4DU  
 Tel. +44 (0)1827 31333-0 · Fax +44 (0)1827 31333-2  
 www.lutze.com · sales.gb@lutze.co.uk



SYSTEMATIC TECHNOLOGY