

EMPARRO MEF 1/1

EMC filter 1-phase, 1-stage

Over voltage protection

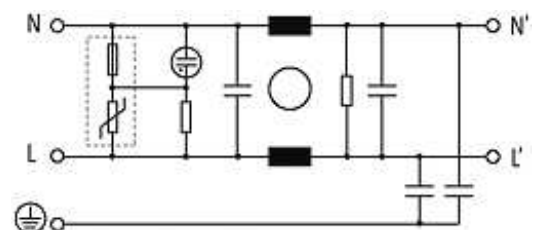
Current: 20 A

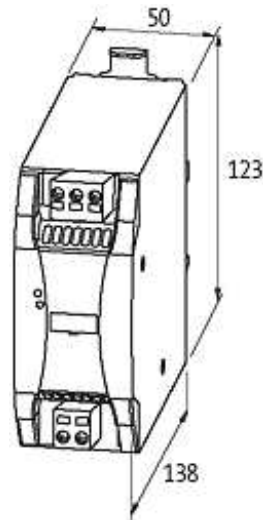
DIN-rail mountable

Attenuation curves on request.

[Link to Product](#)

Illustration





Product may differ from Image

Approvals



General data

Climatic category	25/085/21 (EN 60068-1)
Test isolation voltage	2.7 kV (L - N), 2 s; 2.1 kV (L - L), 2 s (EN 60939-2)
Connection	Push In terminals
Mounting method	DIN-rail mountable TH35 (EN 60715)
Dimensions H x W x D	123x50x138 mm

Technical Data

Operating voltage	max. 250 V AC/300 V DC
Operating frequency	50...60 Hz
Overload current	18 x (IN t) max. 0.5 ms; 1.5 x (IN t) max. 1 min. (1 x per hour)
Consumption at 250 V AC	max. 1 mA
Connection cross section	1...10 mm ² single core (AWG 17...8); 1...6 mm ² multiple core (AWG 17...10)

Commercial data

country of origin	RO
customs tariff number	85363030
minimum order quantity	1