

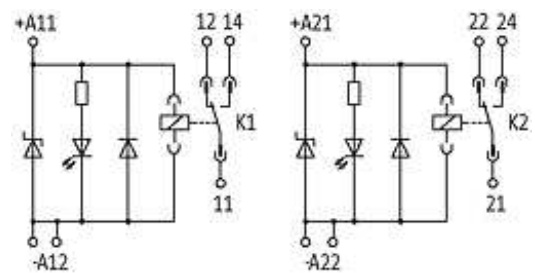
AKTIVE INTERFACEMODULE 2-WAY

IN: 24 VDC - OUT: 250 VAC/DC / 6 A

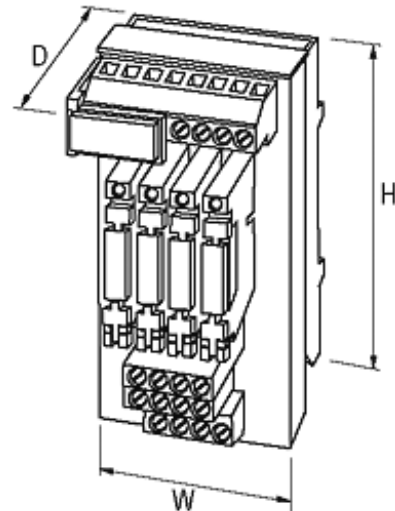
Compact design
with plug relays
2 plugged relays; each 1 NO/NC contact
24 V DC
Diode + LED

[Link to Product](#)

Illustration



stay connected



Product may differ from Image

Utilization category

AC-12	6 A (24/110/230 V AC)
AC-15	3 A (24/110/230 V AC)
DC-13	1 A (24 V DC); 0.2 A (110 V DC); 0.1 A (230 V DC)

General data

Connection	Screw terminals: max. 4 mm ² , with separate -A2 connections
Test isolation voltage	4 kV (input/output)
Mounting method	DIN-rail mountable (EN 60715)
Dimensions H × W × D	86×22.5×75 mm

Technical Data

Switching voltage	12...250 V AC/DC
Switching current	max. 6 A
Min. load current	10 mA

Commercial data

country of origin	CZ
customs tariff number	85437090
minimum order quantity	1