

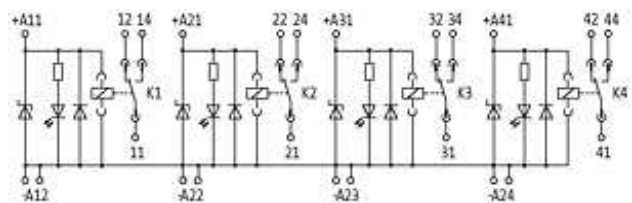
## AKTIVE INTERFACEMODULE 4-WAY

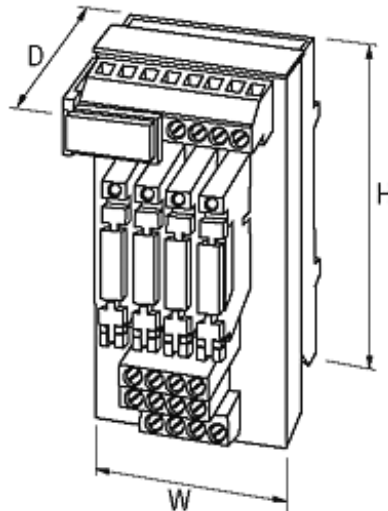
IN: 24 VDC - OUT: 250 VAC/DC / 6 A

Compact design  
with plug relays  
4 plugged relays; each 1 NO/NC contact  
24 V DC  
Diode + LED

### [Link to Product](#)

#### Illustration





Product may differ from Image

#### Utilization category

AC-12	6 A (24/110/230 V AC)
AC-15	3 A (24/110/230 V AC)
DC-13	1 A (24 V DC); 0.2 A (110 V DC); 0.1 A (230 V DC)

#### General data

Connection	Screw terminals: max. 4 mm <sup>2</sup> , with separate -A2 connections
Test isolation voltage	4 kV (input/output)
Mounting method	DIN-rail mountable (EN 60715)
Dimensions H × W × D	86×45×75 mm

#### Technical Data

Switching voltage	12...250 V AC/DC
Switching current	max. 6 A
Min. load current	10 mA

#### Commercial data

country of origin	CZ
customs tariff number	85437090
minimum order quantity	1