

MODLINK MSDD CABLE ENTRY SYSTEM

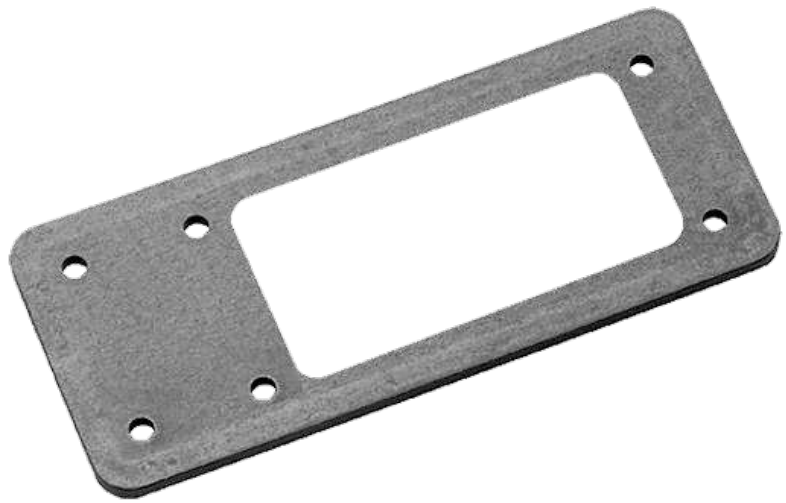
KDL 24/16 aluminium black anodised

Adapter
from size 24 to 16

For sale only in packing units

[Link to Product](#)

Illustration



Product may differ from Image

General data

Dimensions H × W × D 146×58×2 mm

Technical Data

Protection IP54 with seal and correct cable entry gland

Material Polyamide

Fire category/fire behavior (UL94): VO

Toxicity halogen-free

Commercial data

country of origin DE

customs tariff number 76169990

minimum order quantity 1