



Model Number

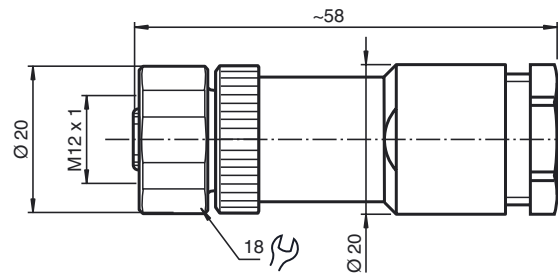
V1-G-DUO-PG11

Field-attachable female cordset,
Duo version

Features

- Screw terminal connection
- Metal locking
- Simple assembling of 2 signals to one M12 plug-in station
- Two double cable seals included in the delivery package
- Suitable for cable diameters 2 ... 3 mm und 4 ... 5 mm

Dimensions



Technical data

General specifications

Number of pins	4
Connection 1	socket
Construction type 1	straight
Threading 1	M12
UL File Number	E363587

Electrical specifications

Operating voltage	U_B	max. 250 V AC/DC
Operating current		max. 4 A
Volume resistance		< 3 m Ω

Ambient conditions

Ambient temperature	-40 ... 85 °C (-40 ... 185 °F)
Pollution Degree	3

Mechanical specifications

Protection degree	IP67
Connection	1 x M12 straight socket Screw terminals for max. 0.75 mm ²
Material	
Contacts	CuZn
Contact surface	Au
Body	PA
Cable	
Sheath diameter	2.1 ... 3 mm or 4 ... 5 mm

Compliance with standards and directives

Standard conformity	
Protection degree	EN 60529

Electrical connection

