

## ULTRA 3000



## Service program

- WINDOWS™ user interface with up to 5 independent windows.
- For all ultrasonic sensors with RS 232 interface.
- Convenient parameterization of all relevant sensor functions, such as:
  - evaluation method
  - switching behavior
  - switch points
  - analog output
  - measuring window
  - filter functions
  - fault management
  - etc.

to optimally adapt the sensor to its current application.

- Logging functions for sensor parameter settings and recorded series of measurements.

Use the appropriate interface or interface cable for the communication between the PC and sensor (see accessories).

## Why use PC software for parameterization?

Commands and parameters can be transferred to sensors via an RS 232 interface, if present. These commands can be used to output measured values, configure the evaluation process, switch outputs and/or analog output, set and query parameters, and control the general unit functions. This provides the user with an aid in optimally adapting the sensor to its specific application and visualizing parameters or measured results.

## Programmable sensors

<b>Series:</b>	<b>Sensor type:</b>
-30GM	UC...-30GM-..R2-V15
Limit switch	UC...+U9+E6/E7+R2 and UC...+U9+IUE0/E2+R2
	UJ3000+U1+...+RS
-FP	UC6000-FP-...-R2-P5 and UJ6000-FP-...+RS
-F43	UC...-F43-2KIR2-V17

## Brief description

The program features a multilingual, menu-based user interface with comprehensive help. It supports up to 5 independent windows. The windows can be displayed or hidden, and their size and position on the screen can be adjusted as needed. The size and position of the windows is retained by the program.

**Show It:** Graphical display of the measured distance. The set switch points are marked. Simulated LEDs display the switching states of the outputs.

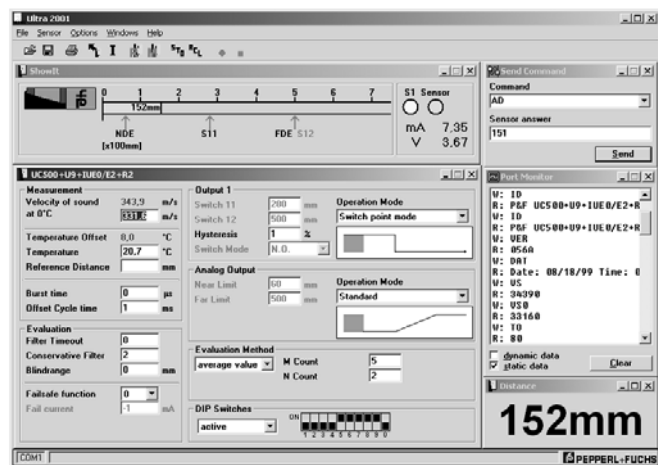
**Parameters:** All parameters can be edited here. Display and input fields permit commands or parameters to be changed at the click of the mouse without detailed knowledge of the relevant commands or their syntax.

**Send command:** Sensor parameters are set and queried here in the same manner as with a terminal program (alternative to the programming window).

**Port Monitor:** Display of the commands sent to the sensor and received from it.

**Distance:** Display of the currently measured distance in mm.

The program and sensor parameters read out by the program can be saved to the hard drive or a disk. Measurement series can be started, the measurement data queried periodically and sent to a printer or saved to the hard drive/disk.



## System requirements

The ULTRA 3000 application will run on any PC or notebook. Required are Windows XP, Windows 7 (32/64 bit) or Windows 8 (32/64 bit), an EGA or VGA graphics card, and an available RS 232 or USB port.