

AP 258E01 surface mounting enclosure for UP 258Ex1 presence detector

5WG1 258-7EB01

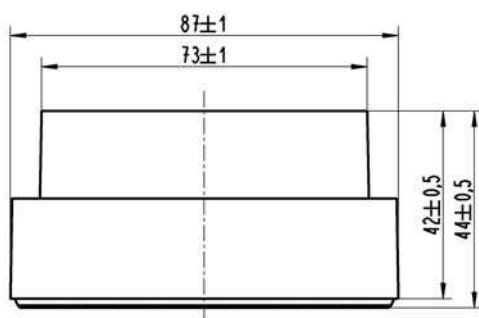
## Product and functional description



AP 258E01 is used as surface mounting enclosure for UP 258Ex1 presence detector for mounting the UP 258Ex1 presence detector as a surface-mounted device.

## Dimension drawing

Dimensions in mm



## General notes

- The operating instructions must be handed over to the client.
- A faulty device shall be sent with a Return Good Note for Service provided by the appropriate Siemens sales office to the following address:  
SIEMENS AG, Siemensstr. 10, D-93055 Regensburg
- If you have further questions concerning the product please contact our technical support.

☎ +49 (911) 895-7222

☎ +49 (911) 895-7223

✉ support.automation@siemens.com

[www.siemens.de/automation/support-request](http://www.siemens.de/automation/support-request)