

**DCF 77 antenna  
AP 390**
**5WG1 390-3EY01**

## Product and Applications Description



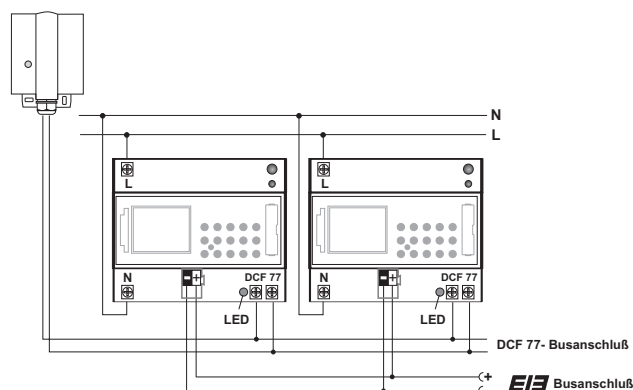
The DCF77 antenna AP 390 is a surface mounted device.

The device provides a DCF77 signal for up to ten (10) 4-channel radio controlled time switches REG 372/02. The maximum permissible wire length between AP 390 and REG 372/02 is 200m.

## Application programs

Because the DCF 77 antenna is not a bus device no application program exists.

## Application example



## Technical Specifications

### Power supply

from REG 372/02 via connecting wire

### Power consumption

ca. 8 mA

### Operational conditions

- Signal Range: 1000 km from Frankfurt a. M.
- For use with Siemens 4-channel radio controlled time switch only (5WG1 372-3EY02)
- Max. wire length between AP 390 and REG 372/02: 200 m
- Max. burden: ten (10) REG 372/02

### Antenna data

- Sensitivity: 100  $\mu$ V/m

### Display elements

- 1 red LED: flashes every second when receiving the DCF77 radio signal

### Connections

- Terminals for NYM 3 x 1,5 mm<sup>2</sup>

### Physical specifications

- polymer casing
- dimensions: 110 x 72 x 54mm (H x B x T)
- weight: ca. 172 g
- fire load: ca. 3300 KJ  $\pm$  10%
- installation: surface mounted

### Electrical safety

- Fouling class (according to IEC 60664-1): 2
- Protection: IP54 according to EN60529
- Device complies with: EN 50 090-2-2 and IEC 60664-1: 1992

### Reliability

- Failure rate: 177 fit at 40°C

### Electromagnetic compatibility

Complies with EN 50081-1, EN 61000-3-2, EN 61000-3-3 and EN 50082-1

### Environmental specifications

- Ambient temperature operating: – 20°C to + 70° C
- Climatic conditions: EN 50090-2-2
- Ambient temperature non-operating: – 25°C to + 70° C
- Rel. humidity (non-condensing): 5% to 93%

### CE norm

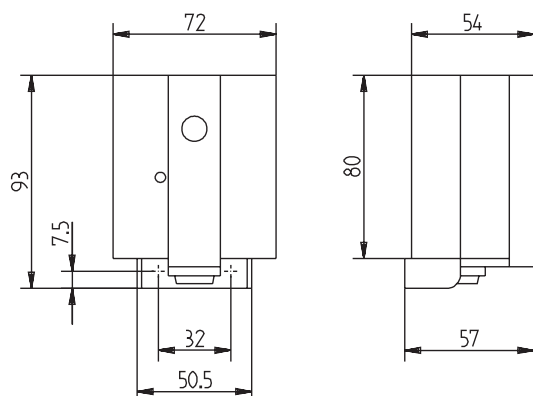
Complies with EMC regulations (residential and functional buildings)

DCF 77 antenna  
AP 390

5WG1 390-3 EY01

## Dimension Diagram

Dimensions in mm



## Installation Instructions

**WARNING**

- The device must be mounted and commissioned by an authorized electrician.
- The prevailing safety and installation rules must be heeded.
- The device must not be opened. A device suspected faulty should be returned to the local Siemens office.

## Mounting and Wiring

## We recommend to mount the device

- outside the distribution board (minimum distance: 4 m)
- under the roof
- or in a protected outdoor space

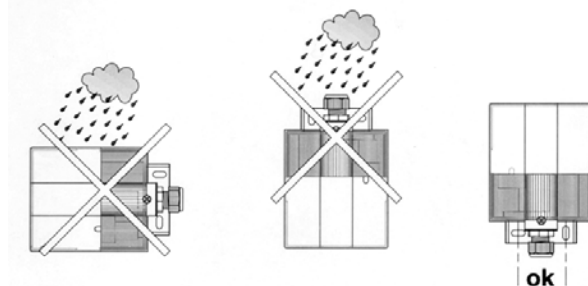
**Note:**

Avoid mounting the device in the vicinity of

- TV sets
- Switched power supplies
- Radio frequency sources
- Metallic devices
- RF transmitters
- Radiological devices
- Personal computers

**Warning:**

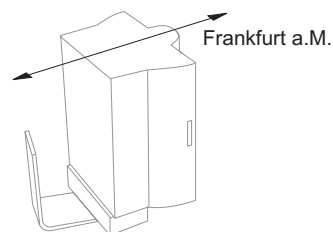
Mount the DCF77 antenna in a vertical position only!

**Consequences of false installation:**

Moisture and/or dust can get into the device!  
Device failure and short circuiting the bus line are potential consequences.

Wiring and orientation of the antenna

- First connect the 4-channel radio controlled time switch REG 372/02 with 230 V~ and then with the bus line.
- Connect the DCF77 antenna AP 390 with the radio controlled time switch REG 372/02 only.
- **The polarity of the connection is important!**  
**The polarity is correct when the yellow LED is NOT lit.**
- Safety extra low voltage is used for the antenna signal. Proper isolation from mains voltage must be provided for.
- For proper orientation of the antenna swivel the antenna horizontally on the mounting bracket until the LED on the front flashes every second.
- Orientation: The arrow should point to Frankfurt a. M.

Mounting the protective cap

- Place the protective cap over the installed device.
- Lock the cap by tightening the screw.