

## Dual pressure gauges with Combined Unit System built of two separate systems acc. to DIN 38030

Accuracy class 1.0 and 1.6

Nominal size: ND 60, 80, 100, 130



### Description

The dual pressure gauges built with combined unit system (consisting of measurement system, movement and dial) are especially designed for applications with highest demands on pressure measurement like vehicles with pneumatic brakes. They have been developed especially for railway vehicles; but they are also suitable for buses or trucks. Using stainless steel for the housing leads to a good resistance against environmental influences. The measurement system made of a special copper alloy ensures a very good long term stability even at high load cycle conditions.

In all versions the dials are illuminated glare-free by a special light conductor.

The illumination of the dial is made either indirectly via slots in the housing or directly via bulb or LED in socket BA9s.

For special applications illuminating foils, stimulated by a converter, are used.

The special design of measuring system, dial and movement as a combined unit system ensures ease of installation in any application.

### Features

- stainless steel case,
- protection class IP 43,
- accuracy class 1.0 and 1.6
- for use up to full scale value,
- 1.3 x overload range,
- measurement system of high quality copper alloy

### Measuring ranges

- 0 ... 6 bar,
- 0 ... 10 bar,
- 0 ... 12bar,
- 0 ... 16 bar

### Applications

Railway vehicles with air pressure brakes,  
trucks and buses with air pressure brakes

**Model: P1539, P1545, P1546, P1123**

## Technical Data

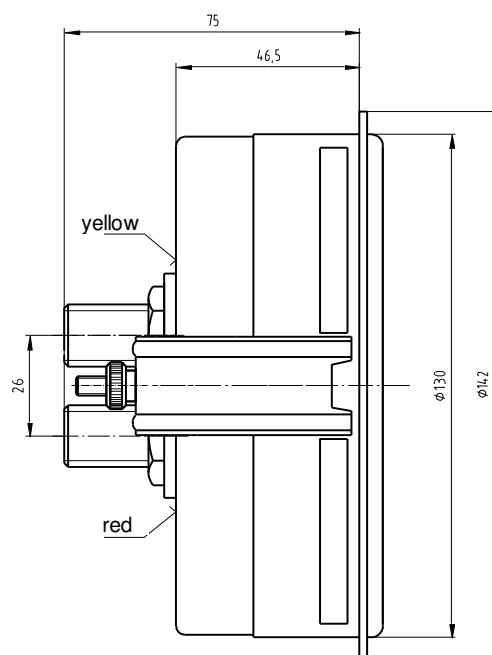
Model	P1539	P1545	P1546	P1123	options
Nominal size	60	80	100	130	
					
Accuracy class	1.6 to EN 837-1		1.0 to EN 837-1		
Range	0 ... 6 bar, 0 ... 10 bar, 0 ... 12bar and 0 ... 16 bar			0 ... 12 bar	
Application	fluctuating working pressure to full scale value			up to 3/4 of full scale value	
Overpressure protection	1.3 x , short time			full scale value	
Case	Stainless steel 1.4301, polished pressure relief (with rubber cover closed)			Steel, black	
Lightning	Indirectly via light slots, just above bulb 24 V 3 W (ND 60 24V 2 W)				4-fold LED luminous foil <sup>1)</sup>
Bezel	Aluminium, black			German National Railways – slip on bezel with light slot	triangular bezel, stainless steel polished
Mounting	One piece fixing brackets, steel galvanized			2 fastening angles	
Window	Laminated safety glass, reflection-reduced			Flat glass	PMMA
Dial	Aluminium, black, scale and imprint white				Aluminium white, dual scale
Pointer	Aluminium, upper pointer red, lower pointer yellow – colours to DIN 38030				Other pointer on request
Movement	brass				
Measurement element	Bourdon tube of hardened copper alloy				
Connection - position	brass back				
- thread	M12x1,5 R6 24°K	M16 x 1,5 R10 24° K	M16 x 1,5 R10 24° K	M16 x 1,5 R10 24° K	Other threads on request
Protection class acc. to EN 60 529/IEC 529	IP 43	IP 43	IP 43	IP 43	
Orifice	Ø 1-0,2 mm				Ø 0,3mm, Ø0,6 mm
Temperatures - Medium	Tmin. -20°C, Tmax. 60°C				
- Ambient	Tmin. -25°C, Tmax. 80°C				
Weight	0,35 kg	0,45 kg	0,52 kg	0,9 kg	

<sup>1)</sup> In the case of lighting over luminous foil, a voltage converter EZE06X002001 is required.

For more information see data sheet DE1251.

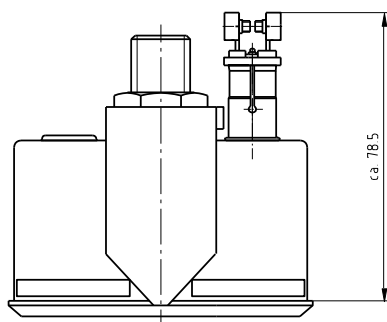
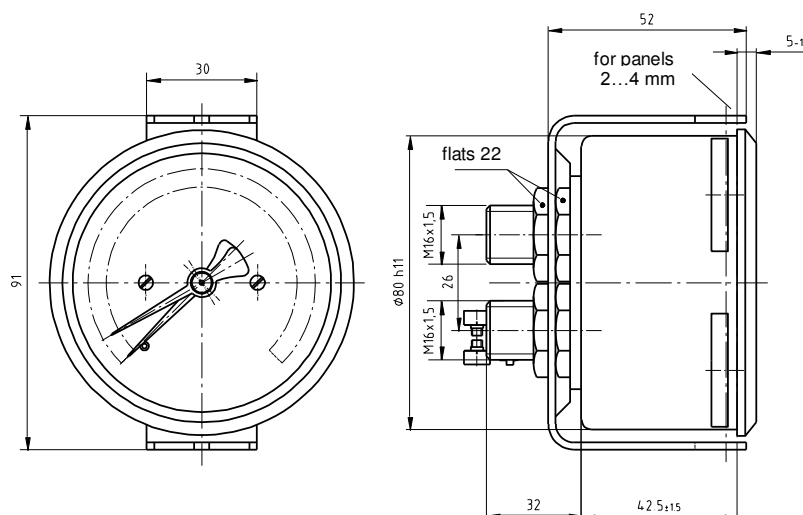
## Dimension

### Model P1123

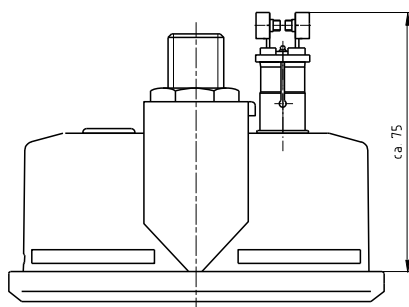
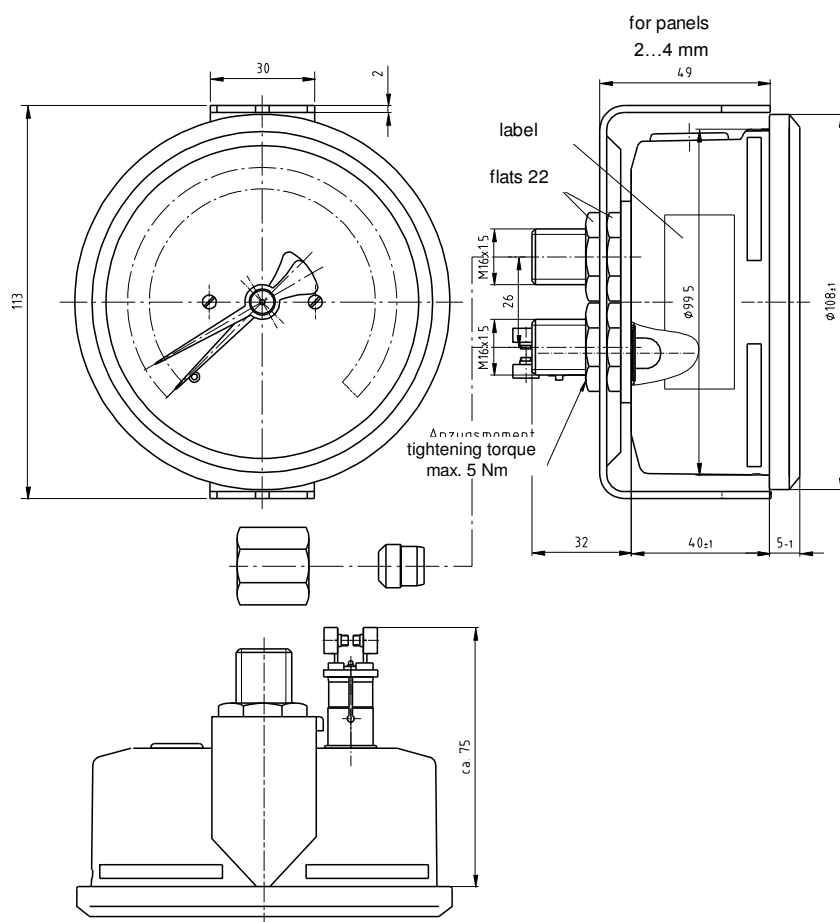


## Dimensions

### Model P1545

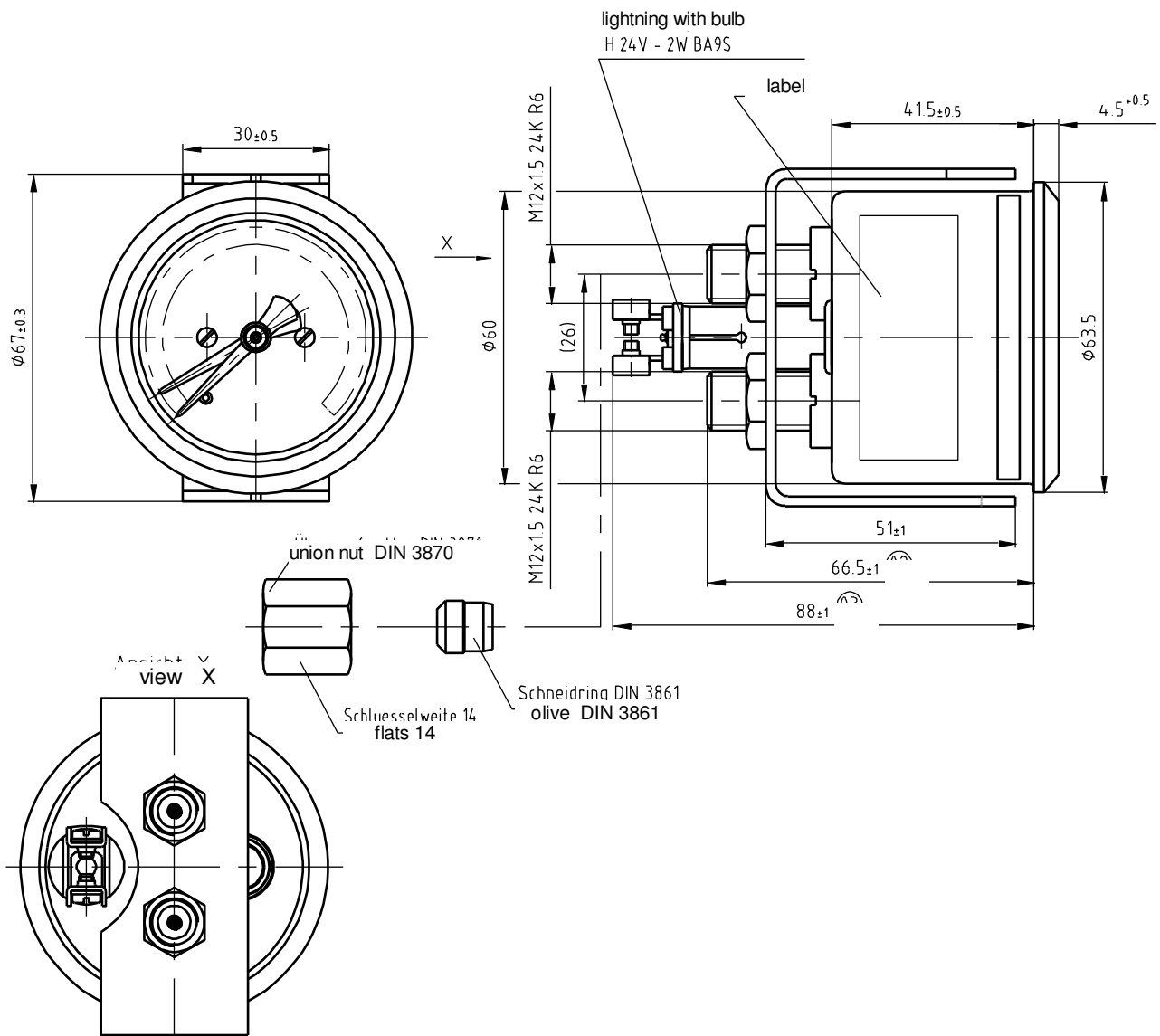


### Model P1546



# Dimension

## Model P1539



Modifications reserved