

MADE  
IN  
GERMANY



COMBIVERT F5



**Modular Drives**  
0.37 ... 900 kW



# Frequency inverter **KEB COMBIVERT F5**

Reputable manufacturers are using KEB COMBIVERT to produce innovative high quality machine systems. Digital power transmission with highest bandwidth and power density is the result of continuous development and the use of modern electronic modules.



KEB COMBIVERT F5 are frequency inverters and servo systems in the power range from 0.37 to 900 kW. They provide a modular program for the mechanical engineering, that meet the different requirements in flexibility with the aim of

- optimal use of resources and materials and
- minimum expense in design and easy implementation of application solutions.

Simple handling and multipurpose features were often contradictory. The CP mode ensures user-friendly handling via a programmable menu. In the subordinate application level KEB COMBIVERT F5 is the world’s first drive generation to have a fully programmable user surface, which is equipped with a plain text operator guidance in 6 languages.

Content			
KEB COMBIVERT F5 Basic	4	KEB COMBIVERT F5 Software function	19
KEB COMBIVERT F5 Compact	6	KEB COMBIVERT F5 Application	20
KEB COMBIVERT F5 Multi	8	Drive-based control technology	21
KEB COMBIVERT F5 Multi voltage class 690 V	10	KEB COMBIVERT F5 LCD operator	22
KEB COMBIVERT F5 Multi with safety function	11	KEB COMBIVIS PC software	23
KEB COMBIVERT F5 Multi encoder systems	12	Operation and display	24
KEB COMBIVERT F5 Multi encoder cables	13	Field bus connection	25
KEB COMBIVERT F5-H Asynchronous-Sensorless-Closed Loop	14	KEB COMBILINE Filter technology and chokes	26
KEB COMBIVERT F5-E Sensorless-Closed Loop	15	KEB COMBILINE Braking resistors	28
KEB COMBIVERT F5 Assembly kit	16	KEB MOTORS Motor technology	30
KEB COMBIVERT F5 Mechanical dimensions	17	KEB COMBIGEAR Gear technology	31
KEB COMBIVERT F5 Hardware specification	18	KEB Addresses	32

## Open-loop systems

Basic	0.37 ... 15 kW
Compact	0.37 ... 90 kW

compact units with 230 V and 400 V connection in functional and economical orientation and universal features create the ideal platform for the design of high-quality machines and systems.

## Closed-loop systems

Multi	0.75 ... 900 kW
-------	-----------------

closed-loop drives of voltage classes 230 V, 400 V and 690 V for asynchronous and synchronous servo motors with feedback devices.

## Application

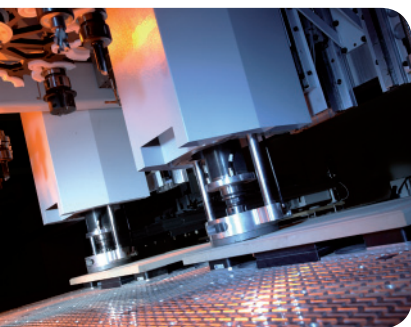
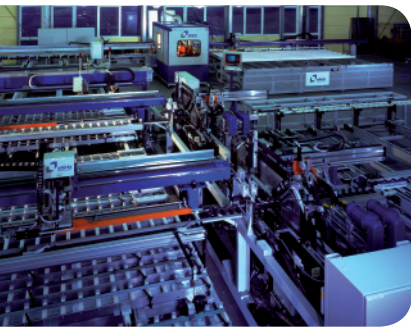
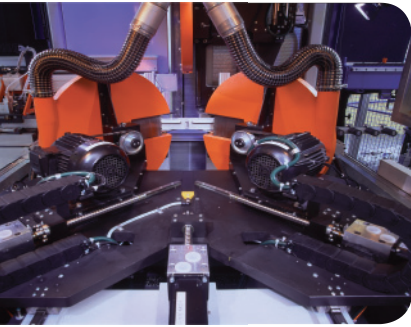
customized equipment solutions tailored to operating conditions and requirements.

Examples are the software versions

- ASCL, encoder-less field orientation for asynchronous motors
- SCL for closed loop performance without a feedback device
- versions with special adapted hardware and software



## Frequency inverters from simple to sophisticated - in open-loop tasks throughout the engineering sector ...



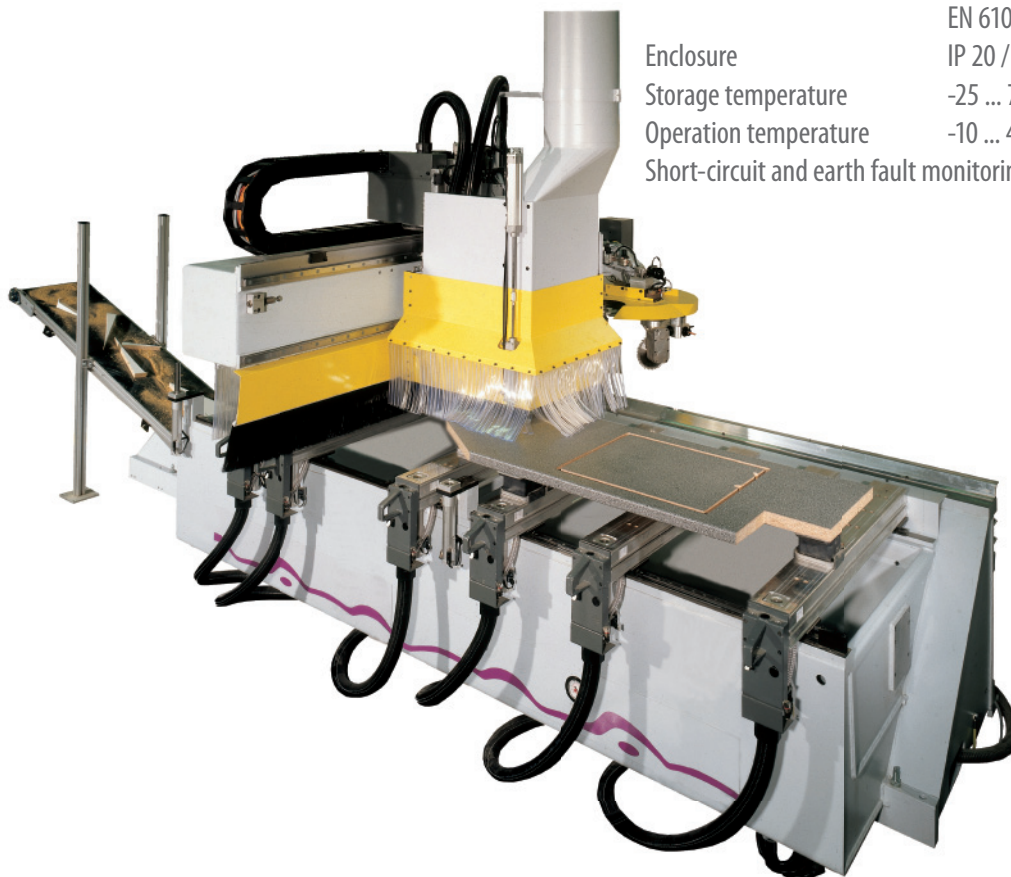
- connection 1-/3-phase 230 V and 3-phase 400 V, choice of AC or DC supply in one unit
- optimized KEB-SMM control algorithm (sensorless motor management)
- 17 pluggable control terminals, PNP-logic
- analog input 0 ... 10 V,  $\pm 10$  V, 0 / 4 ... 20 mA (housing D, E)
- programmable analog output 0 ...  $\pm 10$  V
- 5 programmable digital inputs
- 2 programmable relay outputs
- 4 programmable software inputs/outputs
- 8 free-to-program parameter sets including S-curves, ramp stop, power-off-function, DC-braking, PID controller, electronic motor protection, brake control, internal timer, counter input, energy saving function
- output frequencies up to 1600 Hz, output voltage control, adjustable switching frequencies up to 16 kHz
- controlled positioning to end position/counter pulse
- high-dynamic scanning of the control terminals and the serial interface in 2 ms
- $\pm$  DC-link connection, internal braking chopper GTR7, motor-PTC-evaluation,
- integrated filter to EN 55011/C1 (option: B-, D-, E-housing)

	$P_N$ [kW]	housing	$I_N$ [A]	$I_{max}$ [A]	$f_{sN/max}$ [kHz]	EMC	part no
<b>1-/3-ph 230 V</b> (180 ... 260 V)	0.37	A*	2.3	5	4/8	C1	● 05F5B3A-090A
	0.75	A*	4	8.6	8	C1	● 07F5B3A-0A0A
	1.5	B	7	15.1	16	C1	◆ 09F5B1B-2B0A
	2.2	B	10	21.6	8/16	C1	◆ 10F5B1B-2A0A
	4	D**	16.5	35.6	8/16	C1	◆ 12F5B1D-1A0A
	5.5	E**	24	43	8/16	C1	◆ 13F5B1E-160A
	7.5	E**	33	59	4/16	C1	◆ 14F5B1E-150A
<b>3-ph 400 V</b> (305 ... 500 V)	0.37	A	1.3	2.8	4	C1	● 05F5B3A-390A
	0.75	A	2.6	5.6	4	C1	● 07F5B3A-390A
	1.5	A	4.1	8.9	4	C1	● 09F5B3A-390A
	2.2	B	5.8	12.5	8/16	C1	◆ 10F5B1B-3A0A
	4	B	9.5	21	4	C1	◆ 12F5B1B-350A
	5.5	D	12	25.9	4/16	C1	◆ 13F5B1D-390A
	7.5	D	16.5	35.6	2	C1	◆ 14F5B1D-380A
	11	E	24	43	4/16	C1	◆ 15F5B1E-350A
	15	E	33	59	2	C1	◆ 16F5B1E-340A

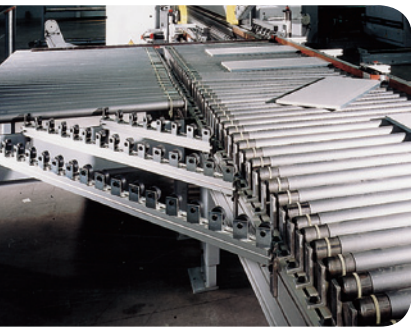
● internal  
\* 1-phase 230 V AC

◆ footprint (option)  
\*\* 3-phase 230 V AC

Generally:  
Product standard EN 61800-2, -5-1  
Emitted interference EN 61800-3  
EN 61000-6 -1...4  
Enclosure IP 20 / VBG 4  
Storage temperature -25 ... 70 °C  
Operation temperature -10 ... 45 °C  
Short-circuit and earth fault monitoring



## More than just an inverter... high technology for open-loop drive systems



- wide power range for 230 V and 400 V connection
- either AC or DC connection
- optimal characteristics at the motor shaft in different application areas with KEB-SMM (sensorless motor management)
- 29 plug-in control terminals, PNP- / NPN logic switchable
- 2 analog inputs 0 ... 10 V,  $\pm 10$  V, 0 / 4 ... 20 mA
- 2 programmable analog outputs 0 ...  $\pm 10$  V
- 8 programmable digital inputs
- programmable outputs: 2 x relay, 2 x transistor
- 4 programmable software inputs/outputs
- 8 free-programmable parameter sets including S-curves, ramp stop, power-off-function, DC-braking, PID controller, electronic motor protection, brake control, internal timer, counter input, output frequency 0 ... 599 Hz, output voltage control, switching frequencies up to 16 kHz, output phase monitoring, energy saving function
- scan time of the control terminals in 2 ms-time pattern
- $\pm$  DC-link connection, motor-PTC monitoring, hardware current limit
- internal brake chopper (series up to housing size G, option from housing size H)
- controlled positioning to end position/counter pulse
- customized versions with output frequencies up to 1600 Hz.

3-ph. 230 V (180 ... 260 V)	$P_N$ [kW]	housing	$I_N$ [A]	$I_{max}$ [A]	$f_{sN/max}$ [kHz]	EMC	part no.
	0.37	B*	2.3	5	16	C1 ◆	05F5C1B-2B0A
	0.75	B*	4	8.6	16	C1 ◆	07F5C1B-2B0A
	1.5	B*	7	15.1	16	C1 ◆	09F5C1B-2B0A
	2.2	B*	10	21.6	8/16	C1 ◆	10F5C1B-2A0A
	4	D	16.5	35.6	8/16	C1 ◆	12F5C1D-1A0A
	5.5	E	24	43	8/16	C1 ◆	13F5C1E-160A
	7.5	E	33	59	4/16	C1 ◆	14F5C1E-150A
	11	G	48	86	8/16	C1 ◆	15F5C1G-190F
	15	H	66	119	16	C1 ◆	16F5C0H-1B0F
	18.5	H	84	151	8/16	C1 ◆	17F5C0H-190F
	22	R	100	181	8	C1 ●	18F5C0R-760A
30	R	115	206	8	C1 ●	19F5C0R-760A	
37	R	145	261	8	C1 ▲	20F5C0R-760A	
45	R	180	324	8	C1 ▲	21F5C0R-760A	

3-ph. 400 V (305 ... 525 V)	$P_N$ [kW]	housing	$I_N$ [A]	$I_{max}$ [A]	$f_{sN/max}$ [kHz]	EMC	part no.
	0.37	B	1.3	2.8	16	C1 ◆	05F5C1B-3B0A
	0.75	B	2.6	5.6	16	C1 ◆	07F5C1B-3B0A
	1.5	B	4.1	8.9	8/16	C1 ◆	09F5C1B-3A0A
	2.2	B	5.8	12.5	8/16	C1 ◆	10F5C1B-3A0A
	4	B	9.5	21	4	C1 ◆	12F5C1B-350A
	5.5	D	12	25.9	4/16	C1 ◆	13F5C1D-390A
	7.5	D	16.5	35.6	2/16	C1 ◆	14F5C1D-380A
	11	E	24	43	4/16	C1 ◆	15F5C1E-350A
	15	E	33	59	2/16	C1 ◆	16F5C1E-340A
	18.5	G	42	75	4/16	C1 ◆	17F5C1G-350A
	22	G	50	90	2/8	C1 ◆	18F5C1G-340F
30	H	60	108	4/16	C1 ◆	19F5C0H-350F	
37	H	75	135	2/8	C1 ◆	20F5C0H-340F	
45	R	90	162	4/16	C1 ●	21F5C0R-950A	
55	R	115	207	4/16	C1 ●	22F5C0R-950A	
75 ★	R	150	270	2/12	C1 ●	23F5C0R-940A	
90 ★	R	180	324	2/8	C1 ▲	24F5C0R-940A	

Generally:

- Product standard EN 61800-2, -5-1
- Emitted interference EN 61800-3
- EN 61000-6-1...4
- Enclosure IP 20 / VBG 4
- Storage temperature -25 ... 70 °C
- Operation temperature -10 ... 45 °C
- from 90 kW -10 ... 40 °C
- Short-circuit and earth fault monitoring

- internal (option) \* 1-/3-phase 230 V AC
- ◆ footprint (option) ▲ book-style (option)
- ★ mains choke generally required (page 26)



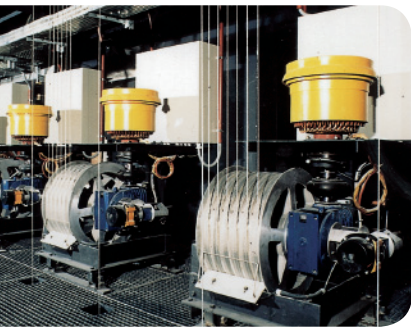
## Open-loop and closed-loop drive controller for synchronous and asynchronous motors. . .



The frequency inverter KEB COMBIVERT F5 Multi is equipped with all functions and characteristics of the KEB COMBIVERT F5 Compact series and furthermore especially prepared for closed-loop operation.

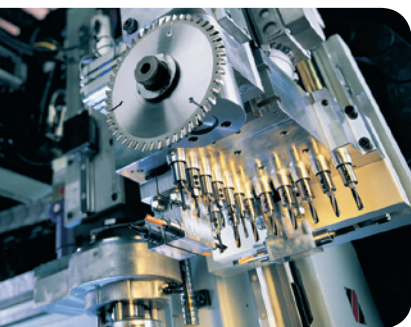
Very flexible because of plug-in feedback cards

- Resolver
- Incremental encoder, initiator
- Sin/Cos encoder
- Absolute encoder
- Hiperface®, EnDat®
- BISS or Tacho



and usable in the operation modes

- KEB-SMM (sensorless motor management) F5-G**
- Field-oriented control F5-M**
- Synchronous motor control F5-S**



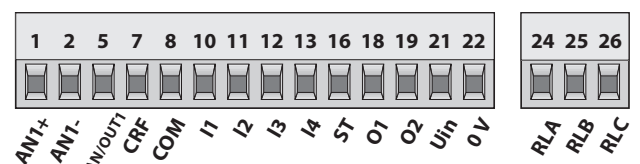
Decentralized automation in the drive actuator with standard functions relieves superior control systems and create clear, compact programs.

- speed and torque control
- position control
- synchronous speed control, electronic gear

or customer-specific solutions such as

- cam switch
- register function
- single-axis positioning
- rotary table positioning
- contouring control

Control terminal housing A





3-ph. 230 V (180 ... 260 V)	$P_N$ [kW]	housing	$I_N$ [A]	$I_{max}$ [A]	$f_{sN/max}$ [kHz]	EMC	part no.
	0.37	A	2.3	4.1	8	C1 ◆	05F5A1A-2E2F
	0.75	A	4	7.2	16	C1 ◆	07F5A1A-2E2F
		D*	4	07F5A1D-2B_A			
	1.5	D*	7	12.4	16	C1 ◆	09F5A1D-2B_A
	2.2	D*	10	18	16	C1 ◆	10F5A1D-2B_A
	4	D*	16.5	29.7	8/16	C1 ◆	12F5A1D-1A_A
	5.5	E	24	36	8/16	C1 ◆	13F5A1E-16_A
	7.5	E	33	49.5	4/16	C1 ◆	14F5A1E-15_A
	11	G	48	86	8/16	C1 ◆	15F5A1G-19_F
	15	H	66	99	16	C1 ◆	16F5A1H-1B_F
	18.5	H	84	151	8/16	C1 ◆	17F5A1H-19_F
	22	R	100	150	8/16	C1 ●	18F5A1R-76_A
30	R	115	172	8/16	C1 ●	19F5A1R-76_A	
37	R	145	217	8/16	C1 ▲	20F5A1R-76_A	
45	R	180	270	8/16	C1 ▲	21F5A1R-76_A	

3-ph. 400 V (305 ... 500 V)	$P_N$ [kW]	housing	$I_N$ [A]	$I_{max}$ [A]	$f_{sN/max}$ [kHz]	EMC	part no.
	0.75	A	2.6	5.2	8/16	C1 ◆	07F5A1A-3E2F
		D	2.6	5.6			07F5A1D-3B_A
	1.5	A	4.1	8.2	8/16	C1 ◆	09F5A1A-3D2F
		D	4.1	7.4			09F5A1D-3A_A
	2.2	D	5.8	10.4	4/16	C1 ◆	10F5A1D-3A_A
	4	D	9.5	17	8/16	C1 ◆	12F5A1D-3A_A
	5.5	D	12	21.6	4/16	C1 ◆	13F5A1D-39_A
	7.5	D	16.5	29.7	2/16	C1 ◆	14F5A1D-38_A
	11	E	24	36	4/16	C1 ◆	15F5A1E-35_A
	15	E	33	49.5	2/16	C1 ◆	16F5A1E-34_A
	18.5	G	42	63	4/16	C1 ◆	17F5A1G-35_A
	22	G	50	75	2/16	C1 ◆	18F5A1G-34_F
30	H	60	90	4/16	C1 ◆	19F5A1H-35_F	
37	H	75	112	2/4	C1 ◆	20F5A1H-34_F	
45	R	90	135	4/16	C1 ●	21F5A1R-95_A	
55	R	115	172	4/16	C1 ●	22F5A1R-95_A	
75 ★	R	150	225	2/12	C1 ●	23F5A1R-94_A	
90 ★	R	180	270	2/8	C1 ▲	24F5A1R-94_A	
110 ★	U	210	263	4/8	C2/C1 ▲	25F5A1U-91_A	
132 ★	U	250	313	4/8	C2/C1 ▲	26F5A1U-91_A	
160 ★	U	300	375	2/8	C2/C1 ▲	27F5A1U-90_A	
200 ★	P	370	463	2/4	C2 ▲	28F5A1P-90_A	
250 ★	P	460	575	2/4	C2 ▲	29F5A1P-90_D	
315 ★	W	570	713	2/4	C2 ▲	30F5A1W-A0_A	
355 ★	W	630	787	2/4	C2 ▲	31F5A1W-A0_D	
400 ★	W	710	887	2/4	C2 ▲	32F5A1W-A0_D	
450 ★	2 x P**	800	1000	2/4	C2 ▲	33F5A1P-90_D	
500 ★	2 x P**	890	1112	2/4	C2 ▲	34F5A1P-90_D	
560 ★	2 x P**	1000	1250	2/4	C2 ▲	35F5A1P-90_D	
630 ★	3 x P**	1150	1437	2/4	C2 ▲	36F5A1P-90_D	
710 ★	3 x P**	1330	1663	2	C2 ▲	37F5A1P-90_D	
800 ★	3 x P**	1450	1813	2	C2 ▲	38F5A1P-90_H	

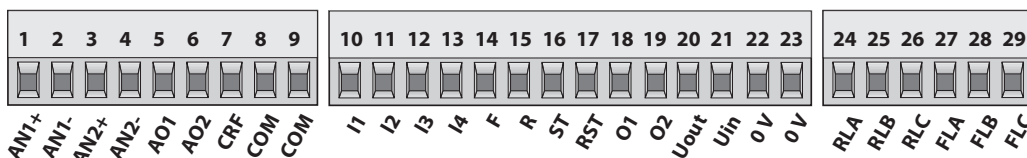
- internal (option)
- \* 1.5 ... 2.2 kW = 1-/3-phase 230 V
- ◆ footprint (option)
- ▲ book-style (option)
- ★ mains choke generally required (page 26)
- \*\* module units 2 x P / 3 x P generally with output choke (page 26)

Generally:

Product standard	EN 61800-2, -5-1
Emitted interference	EN 61800-3
	EN 61000-6-1...4
Enclosure	IP 20 / VBG 4
Storage temperature	-25 ... 70 °C
Operation temperature	-10 ... 45 °C
Short-circuit and earth fault monitoring	

Selection and dimensioning of the synchronous and asynchronous control motors occurs according to rated-, standstill- and peak current.

### Control terminal housing D...W



## Proven characteristics for the use in the upper power range

3-ph. 660/690 V (600 ... 760 V)	$P_N$	housing	$I_N$	$I_{max}$	$f_{sN/max}$	inverter	EMC filter ▲	mains choke	motor choke
	[kW]		[A]	[A]	[kHz]	part no.	part no.	part no.	part no.
	200 ★	1 x P	225	281	2/4	28F5A1P-B0_A	1 x 30E5T60-8001	1x 28Z1B06-1000	1 x 29Z1A04-1001
	250 ★	1 x P	280	350	2/4	29F5A1P-B0_D	1 x 30E5T60-8001	1x 29Z1B06-1000	1 x 29Z1A04-1001
	315 ★	1 x P	345	438	2/4	30F5A1P-B0_A	1 x 30E5T60-8001	1x 30Z1B06-1000	1 x 29Z1A04-1001
	400 ★	2 x P**	430	538	2/4	32F5A1P-B0_A	2 x 30E5T60-8001	2x 28Z1B06-1000	2 x 29Z1A04-1001
	450 ★	2 x P**	500	613	2/4	33F5A1P-B0_D	2 x 30E5T60-8001	2x 29Z1B06-1000	2 x 29Z1A04-1001
	500 ★	2 x P**	550	688	2/4	34F5A1P-B0_D	2 x 30E5T60-8001	2x 30Z1B06-1000	2 x 29Z1A04-1001
	560 ★	2 x P**	620	763	2/4	35F5A1P-B0_D	2 x 30E5T60-8001	2x 30Z1B06-1000	2 x 29Z1A04-1001
	630 ★	3 x P**	710	875	2/4	36F5A1P-B0_A	3 x 30E5T60-8001	3x 29Z1B06-1000	3 x 29Z1A04-1001
710 ★	3 x P**	820	1013	2/4	37F5A1P-B0_D	3 x 30E5T60-8001	3x 30Z1B06-1000	3 x 29Z1A04-1001	
800 ★	3 x P**	900	1100	2/4	38F5A1P-B0_D	3 x 30E5T60-8001	3x 30Z1B06-1000	3 x 29Z1A04-1001	
900 ★	3 x P**	1015	1250	2/4	39F5A1P-B0_H	3 x 30E5T60-8001	3x 30Z1B06-1000	3 x 29Z1A04-1001	

\*\* module units 2 x P / 3 x P generally with output choke (page 26)

▲ book-style (option)

★ mains choke generally required (page 26)

All units correspond to the 400 V type with regard to the technical functions and are universally suitable for the open-loop and closed-loop operation of asynchronous and synchronous motors. Upon request the units are available for rated voltages of 3-phase 500 V AC and 3-phase 600 V AC.



Generally:

Product standard EN 61800-2, -5-1

Emitted interference EN 61800-3

EN 61000-6-1...4

Enclosure IP 20 / VBG 4

Storage temperature -25 ... 70 °C

Operation temperature -10 ... 40 °C

Short-circuit and earth fault monitoring



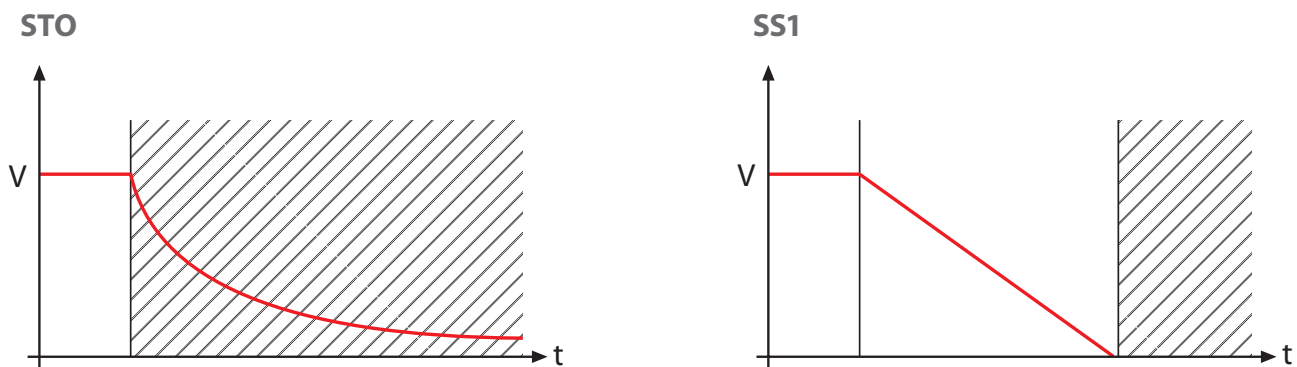
## Safety in drive systems

The requirements of the safety regulations for manufacturers of machines must be carried out according to the implementation of new safety requirements of ISO 13849 and EN 62061.

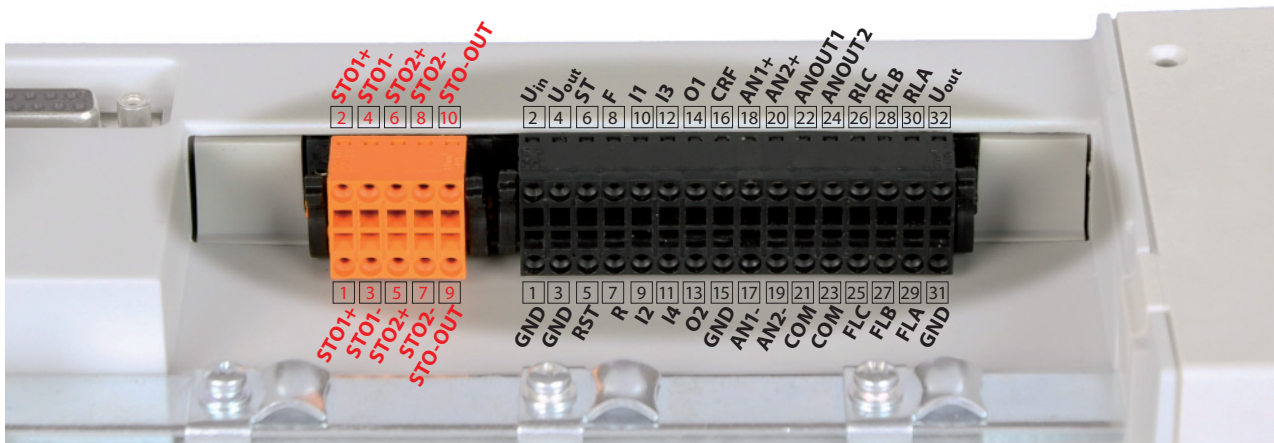
The new hardware design KEB COMBIVERT F5-K is available for open-loop and closed-loop applications in the housings D-E-G-H-R-U-P-W. Function STO is met with the internal 2-channel optocoupler locking (no torque at the motor shaft, stop category 0 of EN 60204-1).

Function SS1 can be met in the wiring with external safety time-delay relay, when the drive within an adjusted time is decelerated and set to STO (stop category 1 of EN 60204-1).

KEB COMBIVERT F5-K meets the requirements of ISO 13849 in accordance with PL-e and SIL 3 according to IEC 62061.



The adapted wiring of the control terminals occurs on a separate 10-pole plug-in connector. The 32-pole control terminal of the analog and digital inputs/outputs corresponds to the assignment of the inverter series KEB COMBIVERT G6 - the open loop drive with STO function.



## Encoder systems flexibly supported

KEB COMBIVERT F5 Multi operates all closed-loop tasks with a broad range of feedback cards for different encoder systems. The installation is done factory made according to the customer request (page 9/10 - 10th place part no.) or can be executed as re-fitting with the KEB Encoder Kits for units without functional safety.

factory-made installation part-code	Channel 1		Channel 2			KEB Encoder Kit	
	encoder type	connection	encoder type	mode	connection	D, E housing	G,H,R,U,W,P housing
D	TTL	D-Sub 15-pole	TTL	Output	D-Sub 9-pole	1MF5K81-DZ19	2MF5K81-DZ19
G	TTL	D-Sub 15-pole	TTL	Input	D-Sub 9-pole	1MF5K81-GZ18	2MF5K81-GZ18
-	TTL	Terminal strip	TTL	Output	Terminal strip	1MF5K81-BZ05	2MF5K81-BZ05
-	TTL	Terminal strip	TTL	Input	Terminal strip	1MF5K81-BZ04	2MF5K81-BZ04
4	TTL	D-Sub 15-pole	SSI	Input	D-Sub 9-pole	1MF5K81-4Z15	2MF5K81-4Z15
A	TTL	D-Sub 15-pole	Initiator	Input	Terminal strip	1MF5K81-AZ07	2MF5K81-AZ07
7	TTL	D-Sub 15-pole	Tacho	Input	D-Sub 9-pole	-	2MF5K81-7Z09
E	Resolver	D-Sub 15-pole	TTL	Output	D-Sub 9-pole	1MF5K81-EZ29	2MF5K81-EZ29
H	Resolver	D-Sub 15-pole	TTL	Input	D-Sub 9-pole	1MF5K81-HZ28	2MF5K81-HZ28
5	Resolver	D-Sub 15-pole	SSI	Input	D-Sub 9-pole	1MF5K81-5Z25	2MF5K81-5Z25
X	HTL	Terminal strip	TTL	Output	Terminal strip	1MF5K81-XZ09	2MF5K81-XZ09
W	HTL	Terminal strip	TTL	Input	Terminal strip	1MF5K81-WZ08	2MF5K81-WZ08
J	HTL	D-Sub 15-pole	TTL	Output	D-Sub 9-pole	1MF5K81-JZ17	2MF5K81-JZ17
K	HTL	D-Sub 15-pole	TTL	Input	D-Sub 9-pole	1MF5K81-KZ16	2MF5K81-KZ16
S	HTL without inverse	Terminal strip	TTL	Output	D-Sub 9-pole	1MF5K81-SZ19	2MF5K81-SZ19
T	HTL without inverse	Terminal strip	TTL	Input	D-Sub 9-pole	1MF5K81-TZ18	2MF5K81-TZ18
8	HTL without inverse	Terminal strip	HTL	Output	Terminal strip	1MF5K81-8Z09	2MF5K81-8Z09
-	HTL without inverse	Terminal strip	none	-	-	1MF5K8G-6Z07	2MF5K8G-6Z07
L	HTL without inverse	D-Sub 15-pole	SSI	Input	D-Sub 9-pole	1MF5K81-LZ17	-
M	SIN/COS	D-Sub 15-pole	TTL	Output	D-Sub 9-pole	1MF5K8G-MZ36	2MF5K8G-MZ26
N	SIN/COS	D-Sub 15-pole	TTL	Input	D-Sub 9-pole	1MF5K8G-NZ35	2MF5K8G-NZ25
1	SIN/COS	D-Sub 15-pole	SSI	Input	D-Sub 9-pole	1MF5K8G-1Z21	2MF5K8G-1Z21
V	SSI-SIN/COS	D-Sub 15-pole	TTL	Output	D-Sub 9-pole	1MF5K8G-VZ27	2MF5K8G-VZ27
U	SSI-SIN/COS	D-Sub 15-pole	TTL	Input	D-Sub 9-pole	1MF5K8G-UZ24	2MF5K8G-UZ24
P	ENDAT	D-Sub 15-pole	TTL	Output	D-Sub 9-pole	1MF5K8G-PZ23	2MF5K8G-PZ23
Q	ENDAT	D-Sub 15-pole	TTL	Input	D-Sub 9-pole	1MF5K8G-QZ22	2MF5K8G-QZ22
3	ENDAT	D-Sub 15-pole	SSI	Input	D-Sub 9-pole	1MF5K8G-3Z20	2MF5K8G-3Z20
-	ENDAT2.2 & BISS	Terminal strip	TTL	Output	Terminal strip	-	2MF5K8G-9Z09
F	HIPERFACE	D-Sub 15-pole	TTL	Output	D-Sub 9-pole	1MF5K8G-FZ29	2MF5K8G-FZ29
I	HIPERFACE	D-Sub 15-pole	TTL	Input	D-Sub 9-pole	1MF5K8G-IZ28	2MF5K8G-IZ28
9	UVW	D-Sub 15-pole	TTL	Output	D-Sub 9-pole	1MF5K8G-9Z07	-
Z	UVW	D-Sub 15-pole	TTL	Input	D-Sub 9-pole	1MF5K8G-ZZ08	2MF5K8G-ZZ08
C	UVW	Terminal strip	HTL without inverse	Output	Terminal strip	-	2MF5K8G-CZ09

## Encoder cable for housing size A

cable type	inverter plug	encoder plug	length [m]	part no. (___ length in [m])
Resolver	RJ45 male	12-pole	2 ... 40	00F50C1-00__
TTL	RJ45 male	12-pole	2 ... 10	00F50C1-30__
Adapter	RJ45 male	D-Sub 15-pole female	0.05	00F50C0-0008
Adapter	RJ45 male	D-Sub 9-pole female	0.05	00F50C0-0009
Master-Slave	RJ45 male	RJ45 male	0.5	00F50C1-20P5



## Encoder cable for housing size D - E - G - H - R - U - W - P

cable type	inverter plug	encoder plug	length [m]	part no. (___ length in [m])
Resolver	D-Sub 15-pole	12-pole	2 ... 30	00F50C1-10__
TTL	D-Sub 15-pole	12-pole	2 ... 30	00F4109-00__
TTL (channel 2)	D-Sub 9-pole	12-pole	2 ... 30	00F4209-00__
Hiperface	D-Sub 15-pole	12-pole	2 ... 30	00.S4809-00__
EnDat	D-Sub 15-pole	17-pole	2 ... 30	00F50C1-40__
TTL (no KEB motor)	D-Sub 15-pole	free connecting cable	2 ... 30	00F4P09-00__
TTL (channel 2) (no KEB motor)	D-Sub 9-pole	free connecting cable	2 ... 30	00F4D09-00__
Master-Slave	D-Sub 9-pole male	D-Sub 9-pole male	1	00F4509-0001



Further lengths on request.

### Adapter

D-Sub 15-pole on terminal part no. ADF4Y72-0009

### MS-repeater for multi-master-slave applications

The signal amplifier prepares the incoming master signal in a way that the first signal is looped through and the second signal is measured and amplified!

part no. 00F4072-2008



cable type	inverter plug	encoder plug	length [m]	part no. (___ length in [m])
Master cable	D-Sub 9-pole male	D-Sub 9-pole male	1	00F4509-0001
Slave cable	D-Sub 9-pole male	D-Sub 9-pole female	0.25	00F4409-0P25
Slave cable	D-Sub 9-pole male	D-Sub 9-pole female	0.5	00F4409-0P50
Slave cable	D-Sub 9-pole male	D-Sub 9-pole female	1	00F4409-0001



KEB encoder cables are twisted in pairs and double screened, in order to reach the best interference immunity.

## Asynchronous drive technology of the top class

KEB COMBIVERT F5-H (ASCL) and with internal safety F5-L is the result of long lasting model optimization of encoder-less field orientation and offers as result best speed and torque characteristics with asynchronous motors without encoder feedback.

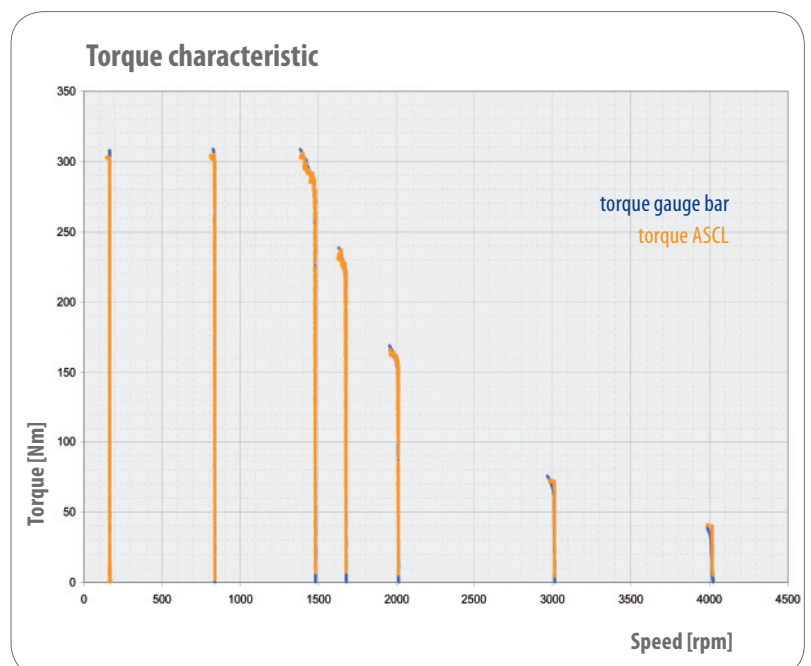
# ASCL

### Properties

- high speed stability
- load step response like closed-loop systems
- torque accuracy typically  $< 3\% M_N$
- display values with correction adjustment in the system „on the fly“
- operation with output filters
- low installation costs in case of loss of encoder cable, encoder and encoder interface
- optimized efficiency in partial load range
- automatic adaption of the motor
  - calibration routine of stator- and rotor resistance, main- and leakage inductance and dead time characteristic
  - thermal calculation in the motor model
- controller integration → symmetrical optimum
  - simplifies the Ki/Kp calibration of the exterior closed circuit (speed)
  - only one parameter for drive optimization
  - speed preset
- exact torque display by
  - determination of torque-offsets and elimination in the display
  - subtraction of no-load torque of the system (optional)

### Potential applications

- extruder main drives
- crusher drives / shredder
- centrifuges
- test bench / test systems
- stirring and mixer units
- meat cutter and mincer
- mixing plants
- heat pumps
- hydraulic pumps
- generators
- machine tools for wood, plastic, metal, ...



## Operation of synchronous motors without encoder feedback

The optimization of efficiency, available space and increasing dynamic forces the use of synchronous motors, which can be operated by F5-E (SCL) and F5-P (safety version) now without rotor position feedback in all applications without positioning tasks.

The calculated control method of the software has no effect through external disturbances and leads to high smoothness. Mechanically stressed motors, high frequency special machines or high-volume torque motors are operated more functional and safe with elimination of the encoder system.

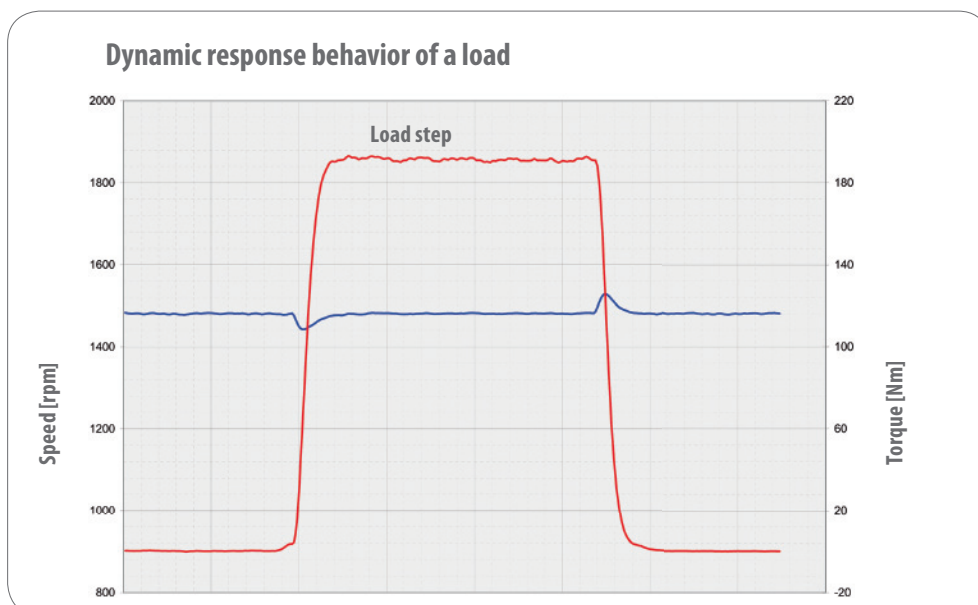
### Properties

- standstill position detection (calibration without rotation)
- operation with output filters
- low installation costs in case of loss of encoder line, encoder and encoder interface
- high dynamic / non-slip rotation
- reduced installation space / lower weight
- high efficiency / high availability

### Potential applications

- driven tools in working stations
- synchronous process chain in textile machines
- hybrid drives
  - diesel electric drives in conveyor systems, container or heavy duty vehicles
  - electric drives in boats, yachts and vehicles
- synchronous extruder
- injection moulding technology / blow moulding technology
- high frequency pump drives in compressors, screws, vacuum pumps

# SCL



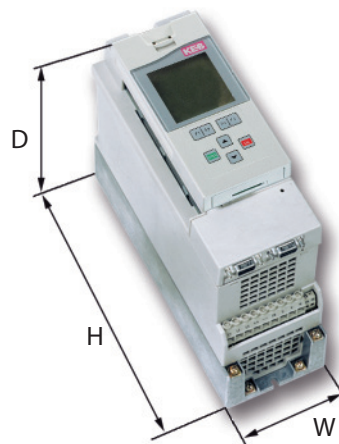
# KEB COMBIVERT F5 Assembly kit

Frequency inverters KEB F5 COMBIVERT are flexible designed in a modular system and available in the following versions

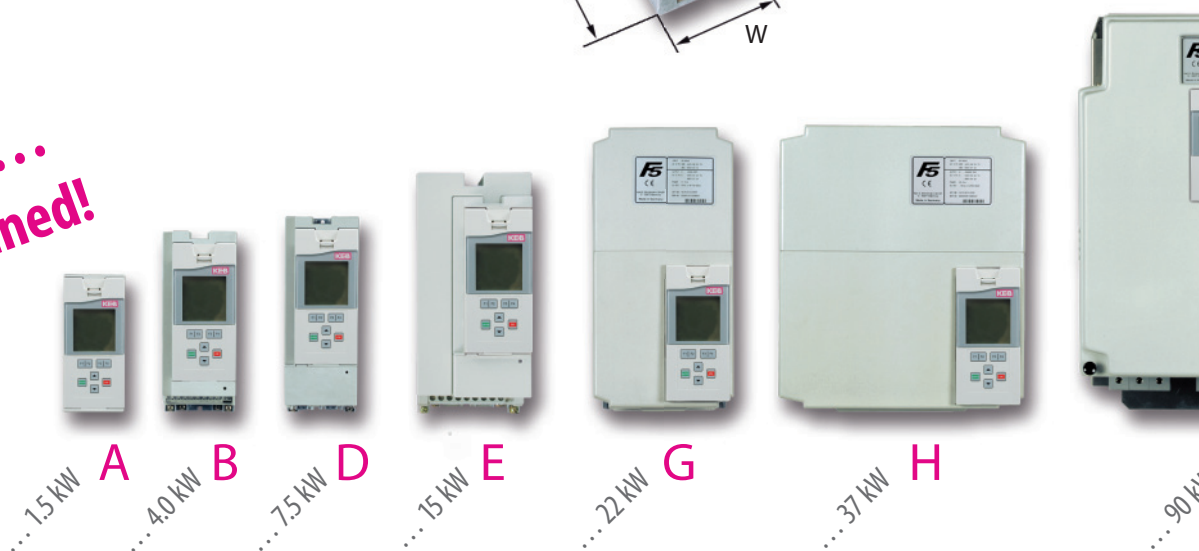
- chassis unit of protection class IP 20 - universal mounting in the control cabinet
- chassis unit with factory mounted interference filter - unit-internal interference suppression
- chassis unit with factory mounted braking resistor - absorb pulse energy without additional required space, also available in combination with interference filter
- customer version FLAT-REAR - (FR) - direct thermal connection with cooling surfaces
- customer version LIQUID COOLED - (LC) liquid cooling
- customer version EXTERNAL HEAT - (EH) - through mounted heat sink for the thermal separation of the power unit

For customer-specific series-applications KEB provides complete solutions in the control cabinet installation in protection class IP 54.

Applied mounting points in a grid allow the use of prepared mounting plates.



**compact...  
new defined!**





housing	installation version IP20 W x H x D (mm)			available customer versions		
	unit	with EMC filter	with resistor	FR	LC	EH
A	76 x 191 x 144	76 x 191 x 144 76 x 216 x 184		-	-	-
B	90 x 220 x 160	90 x 249 x 200	90 x 220 x 190	●	-	●
D	90 x 250 x 181	90 x 285 x 221	90 x 250 x 211	●	-	●
E	130 x 290 x 208	132 x 352 x 258	130 x 290 x 238	●	●	●
G	170 x 340 x 255	181 x 415 x 311	170 x 340 x 280	●	●	●
H	297 x 340 x 255	300 x 445 x 321		●	●	●
R	340 x 520 x 355	340 x 520 x 355* 110 x 478 x 115		●	●	●
U	340 x 800 x 355	110 x 598 x 240		-	●	●
P	340 x 960 x 454	260 x 386 x 115		-	●	●
W	670 x 940 x 368	260 x 386 x 115 260 x 386 x 135		-	●	-

\* up to size 23.F5.

■ external unit

● customer version upon request



# KEB COMBIVERT F5 Hardware specification

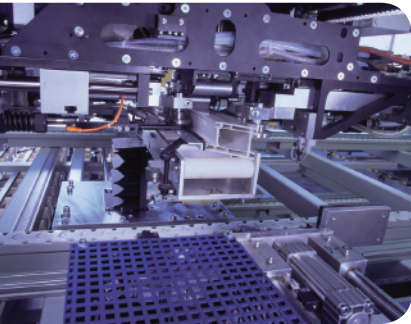
Controlboard inverter housing		Basic B ABDE	Compact C BDEGHR	A A	Multi A / K DEGHRUWP	A	SCL E / P DEGHRUWP	ASCL H / L DEGHRUWP	
operating mode	open-loop	●	●	●	●	-	-	●	
	closed-loop	-	-	●	●	●	●	●	
	encoder-less closed-loop	-	-	-	-	●	●	●	
	AC servo mode	-	-	●	●	●	●	●	
	flux vector mode	-	-	●	●	●	●	●	
	encoder-less vector mode (KEBSMM - sensor less motor management)	●	●	●	●	-	-	●	
	standard v/f mode	●	●	●	●	-	-	●	
controlboard	voltage supply	intern	intern	extern	intern	extern	intern	intern	
	internal voltage supply	24 V DC	24 V DC	-	24 V DC	-	24 V DC	24 V DC	
	24 V DC supply external	no	yes	yes	yes	yes	yes	yes	
	I/O scan time	2 ms	2 ms	1 ms	1 ms	1 ms	1 ms	1 ms	
	number of terminals	17	29	17	29	17	29	29	
	pluggable control terminals	ja	ja	ja	ja	ja	ja	ja	
input	digital	number	5	8	5	8	5	8	
		specification	PNP	PNP/NPN	PNP	PNP/NPN *	PNP	PNP/NPN *	PNP/NPN *
		adjustable	-	●	-	●	-	●	●
	analog	number	1	2	1	2	1	2	2
		specification	0 ... 10 V; ± 10 V	●	●	●	●	●	●
		0 ... 20 mA / 4 ... 20 mA	-	●	-	●	-	●	●
		potential-free	(single-ended)	●	●	●	●	●	●
		resolution	11 bit	12 bit	11 bit	12 bit	11 bit	12 bit	12 bit
		fast scan time	no	250 µs	250 µs	250 µs	250 µs	250 µs	250 µs
		sample and hold mode	yes	yes	yes	yes	yes	yes	yes
output	digital	number	0	2	2	2	2	2	
		specification open-collector (50 mA total)	-	●	●	●	●	●	●
	analog	number	2	2	1	2	1	2	2
		specification potential-free (30 VDC / 1 A)	●	●	●	●	●	●	●
		number	1	2	1	2	1	2	2
		specification	0 ... 10 V; ± 10 V	●	●	●	●	●	●
resolution	(5 mA)	2x (5 mA)	(5 mA)	2x (5 mA)	(5 mA)	2x (5 mA)	2x (5 mA)		
resolution	11 bit	11 bit	11 bit	11 bit	11 bit	11 bit	11 bit		
encoder feedback		-	-	standard	option card	standard	option card	option card	
	2 encoder inputs	-	-	●	●	●	●	●	
	positioning to second encoder	-	-	●	●	●	●	●	
	encoder emulation TTL output	-	-	●	●	●	●	●	
	analog encoder	-	-	resolver	resolver Sin/Cos UVW encoder tacho generator	resolver	resolver Sin/Cos UVW encoder tacho generator	resolver Sin/Cos UVW encoder tacho generator	
	digital encoder	-	-	TTL	TTL HTL initiator	TTL	TTL HTL initiator	TTL HTL initiator	
	serial encoder (single- und multi-turn)	-	-	-	BiSS EnDat Hiperface SSI SSI-Sin/Cos	-	BiSS EnDat Hiperface SSI SSI-Sin/Cos	BiSS EnDat Hiperface SSI SSI-Sin/Cos	

● included \* not for K / L / P

Control board inverter housing	Basic	Compact	Multi		SCL		ASCL
	B ABDE	C BDEGHR	A A	A / K DEGHRUWP	E / P A	DEGHRUWP	H / L DEGHRUWP
<b>Speed mode</b>	Hz	Hz	Hz, rpm	Hz, rpm	rpm	rpm	Hz, rpm
separate S-curve ACC/DEC	●	●	●	●	●	●	●
separate lower/upper S-curve times	-	-	●	●	●	●	●
sep. acceleration time for counter clockwise-/clockwise rotation	●	●	●	●	●	●	●
sep. deceleration time for counter clockwise-/clockwise rotation	●	●	●	●	●	●	●
ogive function	-	-	●	●	●	●	●
speed search (aligning the motor)	●	●	●	●	●	●	●
fast analog input	●	●	●	●	●	●	●
2 analog inputs with prog. function	-	●	-	●	-	●	●
fixed speed / fixed frequency	4	4	4	4	4	4	4
fixed speed / fixed frequency with set-programming	16	32	16	32	16	32	32
<b>Positioning mode</b>							
simple repeatable positioning without encoder	●	●	-	-	-	-	-
positioning via motor encoder	-	-	●	●	-	-	-
positioning via external encoder	-	-	●	●	-	-	-
position value resolution	-	-	32 bit	32 bit	-	-	-
internally storable positions	-	-	32	32	-	-	-
analog setpoint setting for target position	-	-	●	●	-	-	-
different reference routines	-	-	●	●	-	-	-
limit switch protection	-	-	●	●	-	-	-
relative-/absolute positioning	-	-	●	●	-	-	-
interruption in the positioning	-	-	●	●	-	-	-
rotary table positioning	-	-	●	●	-	-	-
rotary table positioning with shortest path	-	-	●	●	-	-	-
contouring with bus	-	-	●	●	-	-	-
<b>Synchronisation mode</b>	-	-	●	●	-	-	-
positional synchronisation	-	-	●	●	-	-	-
speed synchronisation	-	-	●	●	-	-	-
programmable gearshifts	-	-	8	8	-	-	-
gearshift via analog input	-	-	●	●	-	-	-
angle adjustment	-	-	●	●	-	-	-
synchronisation with constant distance or ramp	-	-	●	●	-	-	-
<b>Torque mode</b>	-	-	●	●	●	●	●
adjustable torque for all operating conditions	-	-	●	●	●	●	●
adjustable torque for ACC/DEC	-	-	●	●	●	●	●
adjustable torque for motor/regen operation	-	-	●	●	●	●	●
analog torque setting	-	-	●	●	●	●	●
fast analog torque setting	-	-	250 µs	250 µs	250 µs	250 µs	250 µs
acceleration at torque limit	-	-	●	●	●	●	●
<b>Functions</b>							
PID process control	●	●	●	●	●	●	●
automatic motor identification	-	-	●	●	●	●	●
automatic rotor position detection in standstill	-	-	●	●	●	●	●
torque precontrol	-	-	●	●	●	●	●
brake control / handling	●	●	●	●	●	●	●
power off / braking without mains voltage	●	●	●	●	●	●	●
programmable restart-starting conditions	-	-	●	●	●	●	●
programmable timer/counter (sec/h/inc)	2	2	2	2	2	2	2
max. input frequency of the counter	250 Hz	250 Hz	500 Hz	500 Hz	500 Hz	500 Hz	500 Hz

● included

## Unified Drive Platform...



Based on the modular sub-assembly of the KEB COMBIVERT F5 series KEB develops in close collaboration with the OEM user adapted drive systems for series machines.

With long experiences in tasks of the

- packaging industry
- textile industry
- plastic industry
- printing- / paper industry
- woodworking
- storage and transport technology
- lift industry

we integrate customer specific software modules or modified hardware for our customers, e.g. as

- state - machine, i.e. complete functional sequences are stored in the inverter
- adaption to special serial protocols
- industry-specific software e.g. spindle drives
- flexible cooling systems for air and water
- complete switchgear systems



FR (Flat Rear)



EH (External Heat)



LC (Liquid Cooled)

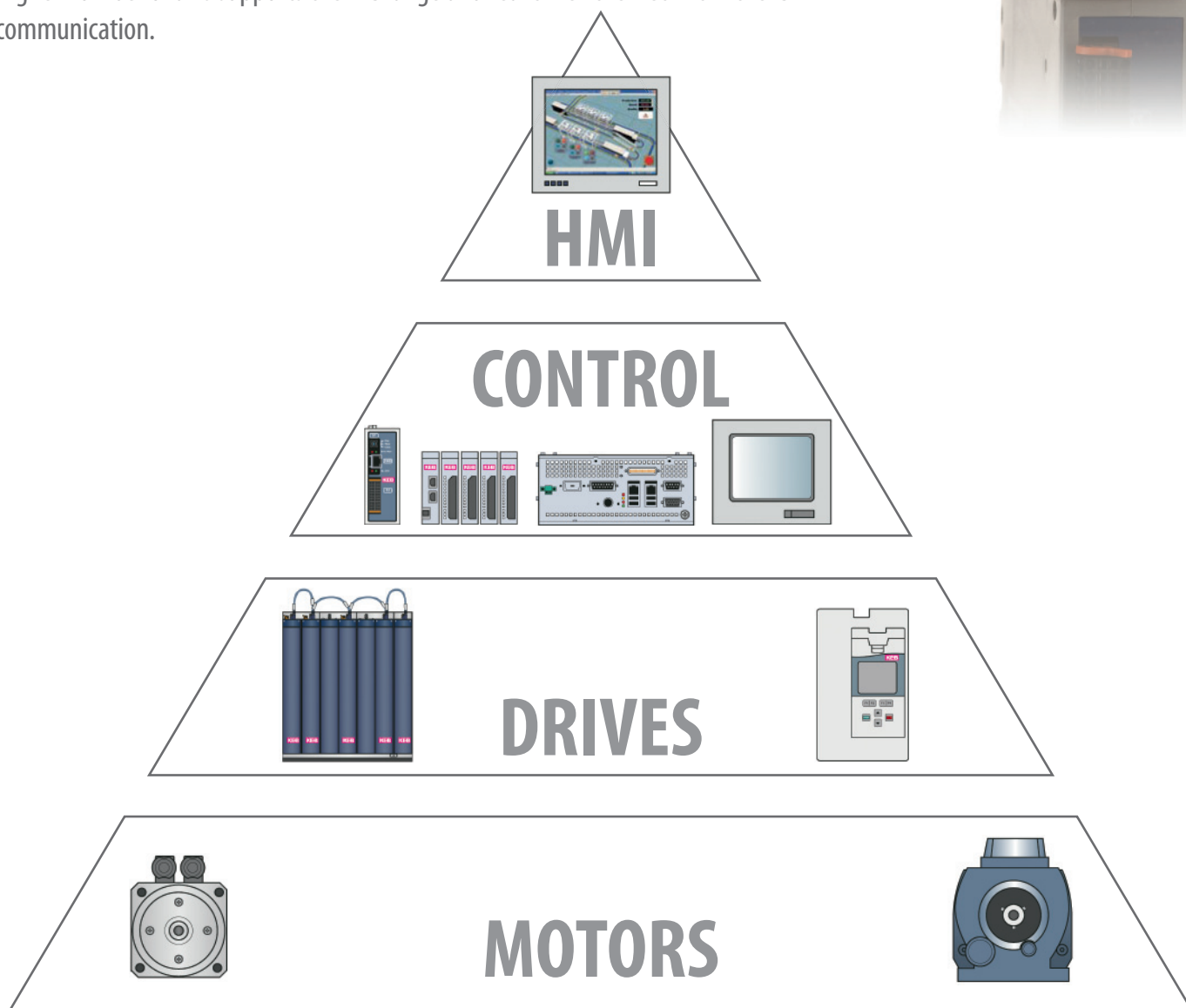
**Drive based automation**

KEB COMBICONTROL C6 is the new line of motion control solution, focussed to high dynamic drive orientated applications and scalable and tailored for dedicated tasks in OEM machines and systems.

The embedded or IPC based control platform utilizes state of the art user free programmable IEC 61131-3 software with the latest solution and utilities offered by the CoDeSys V3 core in the .net based software tool KEB COMBIVIS studio 6.

The embedded drive control in combination with KEB COMBIVERT F5 Multi operates directly 4 or 8 standard drives in a synchronous real-time clock of 1 ms, which can be used for high priority traction controls.

Higher number of axis supports the IPC range and real time Ethernet with EtherCAT communication.



# KEB COMBIVERT F5 LCD operator

## Plaintext operation

LCD operator, part no. **00F5060-K000**

equipped with 6-language plaintext display and menu-controlled keyboard operation as plug-in module for all KEB COMBIVERT F5 units.

The memory function allows storing and loading of complete parameter settings by calling the settings from the internal flash or plug-in SD- / MMC memory card.



Digital operator, part no. **00F5060-1100**

display and keyboard operation,  
plug-in module, prepared in connection with the  
ready-made HSP5 operator **00F5060-9000**  
+ cable **00F50C0-2030** (3 m) / -2100 (10 m)  
for external use as remote operator.



Universal PC software for all KEB COMBIVERT F5 units

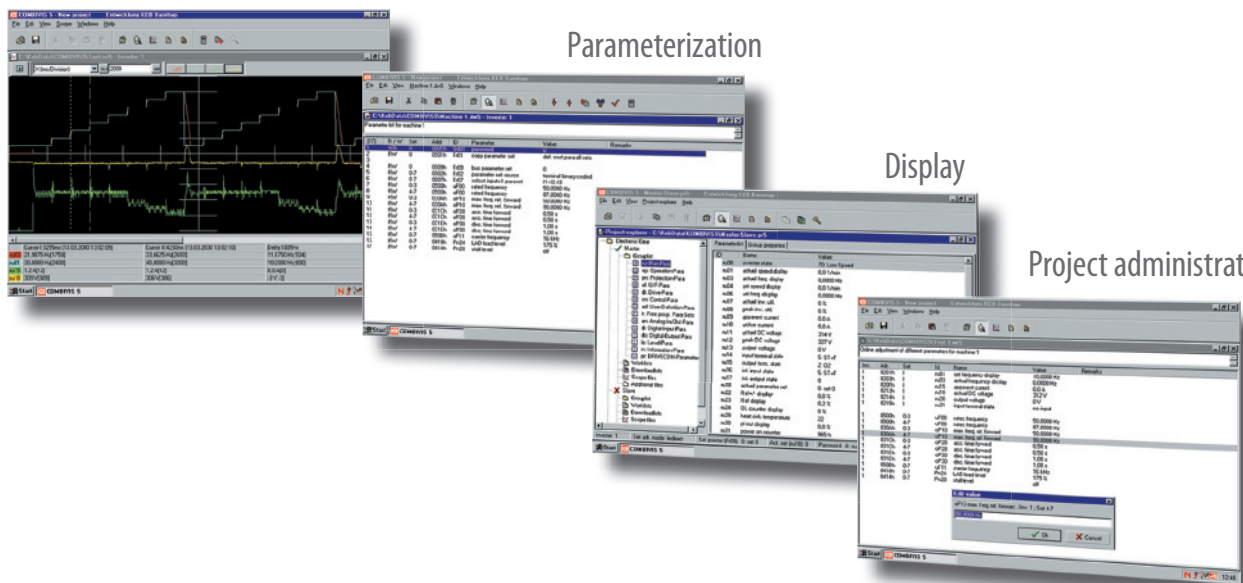
- complete management of unit settings
- display and adjustment of all parameters in up to 8 sets
- display of physical values and monitoring of operating data
- configuration of a customer-specific default setting in the „CP-level“
- analysis/monitoring of the communication between drive and control parallel to the field bus operation

Analysis

Parameterization

Display

Project administration



Available as KEB COMBIVIS 6-/ DVD with part no. **CDSW010-0100**

or as actual file in the INTERNET under <http://www.keb.de>

Accessories:

KEB COMBIVIS interface cable RS 232 / part no. **0058025-001D**  
 in combination with interface operator **00F5060-2000**  
 or alternatively

KEB-USB-Serial-Converter **0058060-0040** +  
 HSP5 adapter **00F50C0-0020** (0.4 m)  
 for connections to the diagnostic / service interface.



# Operation and display

## Serial communication



Profibus operator, part no. **00F5060-3000 / -3100**  
slave connection up to 12,5 Mbaud,  
IN/OUT connection D-Sub 9-pole,  
service interface for HSP5 adapter  
**accessory driver software for S7 02B00SW-S710**



InterBus operator, part no. **00F5060-4000**  
InterBus-remote bus  
IN/OUT connection D-Sub 9-pole,  
service interface for HSP5 adapter



CAN operator, part no. **00F5060-5010 / -5110**  
CANopen profile DS 301 (DS 402),  
IN/OUT connection D-Sub 9-pole  
service interface for HSP5 adapter  
(upon request: version with plug-in terminal strip)



Sercos operator, part no. **00F5060-6001**  
SERCOS IN/OUT/FSMA connection  
service interface for HSP5 adapter

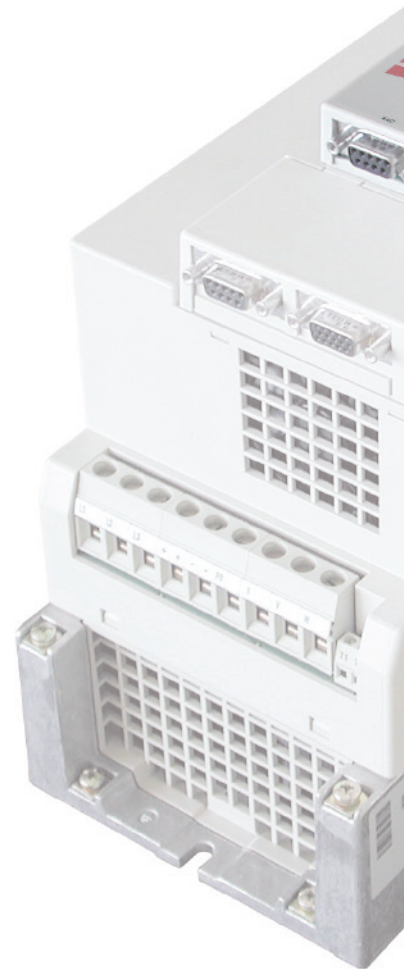


DeviceNet operator, part no. **00F5060-7000**  
IN/OUT connection open entry,  
service interface for HSP5 adapter



MODBUS operator, part no. **00F5060-A000**  
D-Sub 9-pole (female) connection  
service interface for HSP5 adapter

Interface operator, part no. **00F5060-2000 /-2100**  
universal open KEB protocol for PC and PLC connection  
RS 232/485 connection D-Sub 9-pole





**Ethernet-based solutions**



Ethernet operator, part no. **00F5060-8000**  
 IEEE 802.3 10Base-T (10 Mbaud)  
 2 x RJ45 connection  
 service interface for HSP5 adapter

**EtherNet**  
 TCP/IP

EtherCAT operator, part no. **00F5060-F000**  
 2 x RJ45 connection  
 service interface for HSP5 adapter

**EtherCAT**

Powerlink operator, part no. **00F5060-H000**  
 2 x RJ45 connection  
 service interface for HSP5 adapter

ETHERNET   
**POWERLINK**

Profinet operator, part no. **00F5060-L100**  
 2 x RJ45 connection  
 service interface for HSP5 adapter

**PROFI** <sup>®</sup>  
 INDUSTRIAL ETHERNET  
**NET**

EtherNet/IP operator, part no. **00F5060-M100**  
 2 x RJ45 connection  
 service interface for HSP5 adapter

**EtherNet/IP** <sup>™</sup>

Accessories for the HSP5 service interface of the operators:  
 HSP5 adapter,  
 part no. **00F50C0-0020**

KEB-USB-Serial-Converter  
 part no. **0058060-0040**



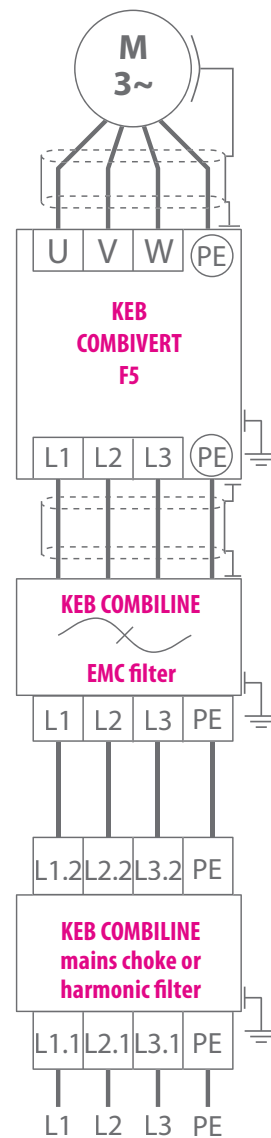
Accessory  
 Driver software for WIN NT/2000/XP  
 (KEB in the download section under software „KEBCom Driver NET“)  
 supports the PC connection for the protocols  
 KEB DIN 66019-II, KEB-HSP5, InterBus and TCP/IP

**KEB-HSP 5 /  
 DIN 66019-II**

**Stable operation in industrial environments**

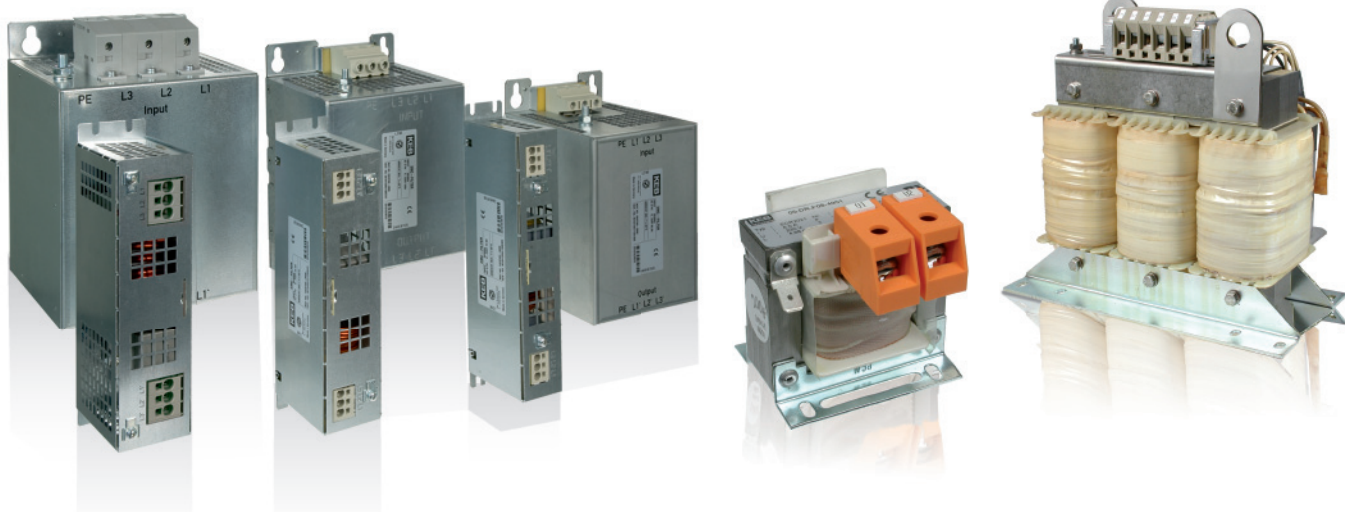
An EMC-compliant assembly with efficient control cabinet and suppression system is the basis for safe operation of machinery and equipment. The current and voltage limiting KEB COMBILINE modules are optimally designed to meet the requirements of the KEB COMBIVERT F5 inverter series and support the use through

- Mains EMC filters - reduce the cable-fed emission to the required limits IEC 61800... - C1/C2. Further variants offer small leakage currents or the operation of special line form.
- Mains choke - reduce the input current draw and the system perturbation.
- Output choke and -filters - reduce the voltage and current load of the motor winding.
- Input/output filters - space-saving combination, consistently adapted and optimized to the drive controller.
- Sine-wave filters - protection of the motor winding against voltage peaks, use of long motor lines and reduction of shielded motor cables.
- Harmonic filters reduce the system perturbation from low frequency interferences from B6-rectifier supplied devices. These harmonic filters are the new innovative solution, which can be designed already in the electrical switching station in the planning phase (simple like a mains choke) and they enable compliance with many international standards.



**EMC service**

is another offer of KEB and means mobile assistance on site, advice in the planning phase, analysis of existing systems. Our contribution in the design of real systems solutions.

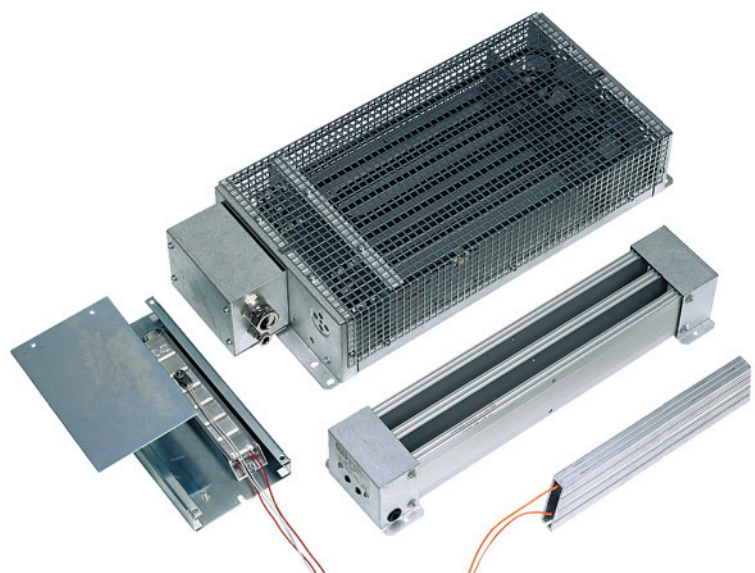
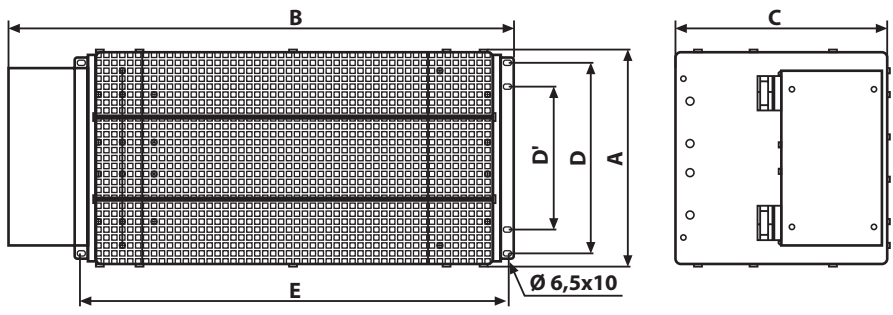
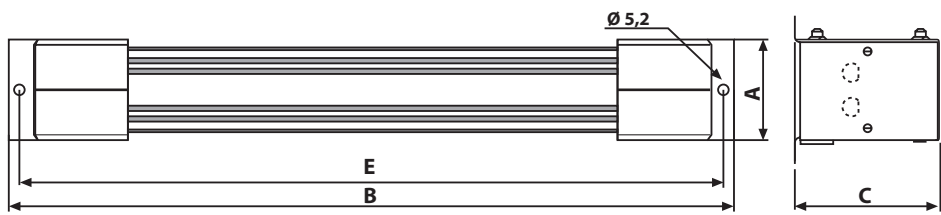


	P <sub>n</sub> [kW]	housing	EMC filter	mains choke	harmonic filter THD (i) ≤ 8 % / ≤ 15 %	motor choke ≤ 100 Hz	sine-wave filter ≤ 100 Hz
<b>230 V class</b>	0.37	A	07U5B0A-1000* <sup>1)</sup>	05Z1B02-1000*			
	0.75	A	07U5B0A-1000* <sup>1)</sup>	07Z1B02-1000*			
	0.75	B	07U5B0B-1010*	07Z1B02-1000*			
	1.5	B	10U5B0B-1000*	09Z1B02-1000*			
	2.2	B	10U5B0B-1000*	10Z1B02-1000*		<b>upon request</b>	
	4	D	12U5B0D-2000	12Z1B03-1000			
	5.5	E	13U5B0E-2000	13Z1B03-1000			
	7.5	E	14U5B0E-2000	14Z1B03-1000			
	11	G	15U5B0G-2000	15Z1B03-1000			
15	H	16U5B0H-2000	16Z1B03-1000				
<b>400 V class</b>	0.37	A	Basic internal, Multi footprint	05Z1B04-1000	09Z1C04-1000 / 1001	05Z1F04-1010	05Z1G04-1000
	0.37	B	10U5B0B-3000	05Z1B04-1000	09Z1C04-1000 / 1001	05Z1F04-1010	07Z1G04-1000
	0.75	A	Basic internal, Multi footprint	07Z1B04-1000	09Z1C04-1000 / 1001	07Z1F04-1010	07Z1G04-1000
	0.75	B	10U5B0B-3000	07Z1B04-1000	09Z1C04-1000 / 1001	07Z1F04-1010	07Z1G04-1000
	1.5	A	Basic internal, Multi footprint	07Z1B04-1000	09Z1C04-1000 / 1001	07Z1F04-1010	09Z1G04-1000
	1.5	B	10U5B0B-3000	07Z1B04-1000	09Z1C04-1000 / 1001	07Z1F04-1010	09Z1G04-1000
	2.2	B	10U5B0B-3000	10Z1B04-1000	12Z1C04-1000 / 1001	10Z1F04-1010	10Z1G04-1000
	4	B	12U5B0B-3000	12Z1B04-1000	12Z1C04-1000 / 1001	12Z1F04-1010	12Z1G04-1000
	5.5	D	13U5B0D-3000	13Z1B04-1000	13Z1C04-1000 / 1001	13Z1F04-1010	13Z1G04-1000
	7.5	D	14U5B0D-3000	14Z1B04-1000	14Z1C04-1000 / 1001	14Z1F04-1010	14Z1G04-1000
	11	E	15U5B0E-3000	15Z1B04-1000	15Z1C04-1000 / 1001	15Z1F04-1010	15Z1G04-1000
	15	E	16U5B0E-3000	16Z1B04-1000	16Z1C04-1000 / 1001	16Z1F04-1010	16Z1G04-1000
	18.5	G	17U5B0G-3000	17Z1B04-1000	17Z1C04-1000 / 1001	17Z1F04-1010	17Z1G04-1000
	22	G	18U5B0G-3000	18Z1B04-1000	18Z1C04-1000 / 1001	18Z1F04-1010	18Z1G04-1000
	30	H	19U5B0H-3000	19Z1B04-1000	19Z1C04-1000 / 1001	19Z1F04-1010	19Z1G04-1000
	37	H	20U5B0H-3000	20Z1B04-1000	20Z1C04-1000		20Z1G04-1000
	45	R	23U5B0R-3000	21Z1B04-1000	21Z1C04-1000		21Z1G04-1000
	55	R	23U5B0R-3000	22Z1B04-1000	22Z1C04-1000		22Z1G04-1000
	75 ★	R	23U5B0R-3000	23Z1B04-1000	23Z1C04-1000		23Z1G04-1000
	90 ★	U	25U5B0U-3000	24Z1B04-1000	24Z1C04-1000	<b>upon request</b>	24Z1G04-1000
	110 ★	U	25U5B0U-3000	25Z1B04-1000	25Z1C04-1000		25Z1G04-1000
	132 ★	U	27U5B0U-3000	26Z1B04-1000	26Z1C04-1000		26Z1G04-1000
	160 ★	U	27U5B0U-3000	27Z1B04-1000	27Z1C04-1000		27Z1G04-1000
	200 ★	P	28U5A0W-3000	28Z1B04-1000	28Z1C04-1000		28Z1G04-1000
	250 ★	P	30U5A0W-3000	29Z1B04-1000	29Z1C04-1000		29Z1G04-1000
	315 ★	W	30U5A0W-3000	2 x 27Z1B04-1000	2 x 27Z1C04-1000	30Z1B22-4430	30Z1G04-1000
	355 ★	W	32U5A0W-3000	2 x 28Z1B04-1000	2 x 27Z1C04-1000	31Z1A04-1000	
	400 ★	W	32U5A0W-3000	2 x 28Z1B04-1000	2 x 28Z1C04-1000	2 x 29Z1A04-1001	
450 ★	2 x P	2 x 28U5A0W-3000	2 x 28Z1B04-1000	2 x 28Z1C04-1000	2 x 29Z1A04-1001		
500 ★	2 x P	2 x 30U5A0W-3000	2 x 29Z1B04-1000	2 x 29Z1C04-1000	2 x 29Z1A04-1001		
560 ★	2 x P	2 x 30U5A0W-3000	2 x 30Z1B04-1000	3 x 29Z1C04-1000	2 x 29Z1A04-1001	<b>upon request</b>	
630 ★	3 x P	3 x 30U5A0W-3000	3 x 28Z1B04-1000	3 x 28Z1C04-1000	3 x 29Z1A04-1001		
710 ★	3 x P	3 x 30U5A0W-3000	3 x 29Z1B04-1000	3 x 29Z1C04-1000	3 x 29Z1A04-1001		
800 ★	3 x P	3 x 30U5A0W-3000	3 x 29Z1B04-1000	3 x 29Z1C04-1000	3 x 29Z1A04-1001		

\* 1-phase 230 V AC; 3-phase filter and chokes upon request <sup>1)</sup> F5 Multi

★ mains choke generally required

KEB braking resistors - supplied with thermal monitoring as standard for the absorption of generated energy. Quiet braking available in compact sub-mounted modules to absorb pulse energy or universal side-mounted units.



Increasing the system efficiency or for high regenerated energy use KEB COMBIVERT R6 regenerative units for block line currents or KEB COMBIVERT F5-AFE, for sinusoidal line currents in the power range up to 900 kW.



		External braking resistors										
part no.	R	P <sub>D</sub>	P <sub>6</sub>	P <sub>25</sub>	P <sub>40</sub>	A	B	C	D/D'	E		
	[Ω]	[W]	[W]	[W]	[W]	[mm]	[mm]	[mm]	[mm]	[mm]		
230 V-class	07BR100-1180	180	44	800	300	180	40	165	26	-	145	OHM-A
	09BR100-1100	100	82	1500	500	300	40	240	26	-	225	
	10BR100-1683	68	120	2200	800	500	40	300	26	-	285	
	12BR100-1333	33	250	4200	1300	750	80	300	28	-	285	
	13BR100-1273	27	300	5100	1500	900	80	400	28	-	385	
	14BR100-1203	20	410	6900	1800	1100	80	400	28	-	385	
	15BR110-1133	13	630	10000	3200	1800	63	370	96	-	355	
	16BR110-1103	10	780	14000	3600	2200	63	470	96	-	455	
	17BR110-1073	7	1200	22000	5400	3100	90	470	96	50	455	
	07BR100-6620	620	56	900	300	180	40	165	26	-	145	
	09BR100-6390	390	90	1500	500	300	40	240	26	-	225	
	10BR100-6270	270	130	2100	800	500	40	300	26	-	285	
	12BR100-6150	150	230	3850	1300	750	80	300	28	-	285	
	13BR100-6110	110	350	5000	1500	900	80	400	28	-	385	
	14BR100-6853	85	410	6900	1800	1100	80	400	28	-	385	
	15BR110-6563	56	620	10000	3200	1800	63	370	96	-	355	
	16BR110-6423	42	820	14000	3600	2200	63	470	96	-	455	
17BR110-6303	30	1200	19000	5400	3100	90	470	96	50	455		
400 V-class	18BR226-6203	20	1700	29000	7500	4500	270	625	116	240/176	526	OHM-B
	19BR226-6152	15	2300	38000	10000	6000	270	625	116	240/176	526	
	20BR226-6123	12	2900	48000	12500	7500	270	625	223	240/176	526	
	21BR226-6103	10	3000	53000	15000	9000	270	625	223	240/176	526	
	22BR226-6866	8,6	4000	68000	17500	10000	270	625	273	240/176	526	
	23BR226-6676	6,7	5200	86000	22000	12500	270	625	273	240/176	526	
	24BR226-6506	5	6900	115000	30000	18000	270	625	223	240/176	526	
	25BR226-6436	4,3	8100	135000	35000	20000	270	625	273	240/176	526	
	26BR226-6386	3,8	9200	154000	40000	22500	270	625	273	240/176	526	
	27BR226-6336	3,3	10000	173000	45000	25000	270	625	273	240/176	526	
	28BR226-6226	2,2	15000	260000	67000	37000	270	625	273	240/176	526	
	29BR226-6176	1,7	20000	340000	90000	50000	270	625	273	240/176	526	
	30BR226-6136	1,3	26000	440000	112000	62000	270	625	273	240/176	526	

P<sub>D</sub> continuous rating  
 P<sub>6</sub> pulse rating with 6 sec. ON-time and period of 120 sec.  
 P<sub>25</sub> pulse rating with 25 sec. ON-time and period of 120 sec.  
 P<sub>40</sub> pulse rating with 40 sec. ON-time and period of 120 sec.

required modules

OHM-B

Optimally harmonized

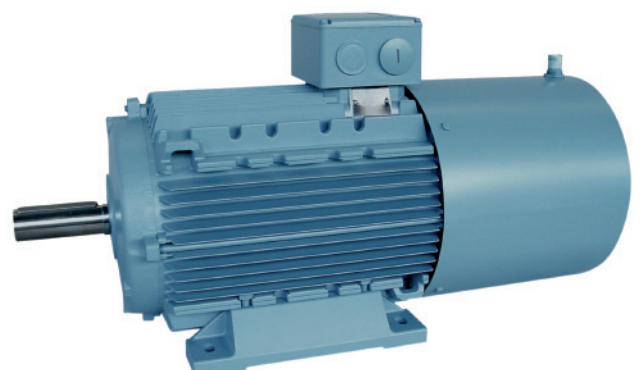
- synchronous motors with nominal torque up to 100 Nm and
- asynchronous motors with nominal power up to 160 kW

convert the output signals of the drive controller KEB COMBIVERT F5 in rotation.

KEB provides efficient series of motors for inverter operation depending on the physical requirements of the application, mechanical housings, inertia ratio motor/machine and/or overload characteristic.

If desired you get complete systems consisting of frequency inverter/servo controller and motor. The initial setting is available worldwide via web based motor configurator ([www.keb.de](http://www.keb.de)).

Detailed information on features, performance and technical data available in the KEB MOTORS catalogue.



Motor configurator										
Motor type	Type series	KEB Art.-no.	U <sub>nom</sub> / V	M <sub>n</sub> / Nm	I <sub>n</sub> / A	I <sub>mat</sub> / A	n <sub>s</sub> / rpm	J / kgcm <sup>2</sup>	Available encoders	
Synchronous	All		All				All		All	
Synchronous	Dynamic Line 1	▶ A1.SM.00x-62xx	230	0.3	1.0	1.2	6000	0.17	Resolver, 8HiPerface SKS36 ...	
Synchronous	Dynamic Line 1	▶ A2.SM.00x-62xx	230	0.5	1.5	1.5	6000	0.24	Resolver, 8HiPerface SKS36 ...	
Synchronous	Dynamic Line 1	▶ A3.SM.00x-62xx	230	0.6	2.0	2.0	6000	0.31	Resolver, 8HiPerface SKS36 ...	
Synchronous	Dynamic Line 1	▶ A4.SM.00x-62xx	230	0.8	2.9	3.2	6000	0.45	Resolver, 8HiPerface SKS36 ...	
Synchronous	Dynamic Line 1	▶ B1.SM.00x-42xx	230	0.6	2.0	1.9	4000	0.22	Resolver, 7HiPerface SKS52 ...	
Synchronous	Dynamic Line 1	▶ B1.SM.00x-62xx	230	0.5	2.5	2.6	6000	0.22	Resolver, 7HiPerface SKS52 ...	
Synchronous	Dynamic Line 1	▶ B2.SM.00x-42xx	230	1.3	2.9	3.2	4000	0.36	Resolver, 7HiPerface SKS52 ...	
Synchronous	Dynamic Line 1	▶ B2.SM.00x-62xx	230	1.0	4.4	5.0	6000	0.36	Resolver, 7HiPerface SKS52 ...	
Synchronous	Dynamic Line 1	▶ B3.SM.00x-42xx	230	2.0	4.7	5.5	4000	0.57	Resolver, 7HiPerface SKS52 ...	
Synchronous	Dynamic Line 1	▶ B3.SM.00x-62xx	230	1.5	6.6	7.7	6000	0.57	Resolver, 7HiPerface SKS52 ...	
Synchronous	Dynamic Line 1	▶ C1.SM.00x-32xx	230	0.8	1.4	1.5	3000	1.20	Resolver, 7HiPerface SKS52 ...	
Synchronous	Dynamic Line 1	▶ C1.SM.00x-42xx	230	0.8	1.8	2.0	4000	1.20	Resolver, 7HiPerface SKS52 ...	
Synchronous	Dynamic Line 1	▶ C1.SM.00x-62xx	230	0.7	2.4	3.0	6000	1.20	Resolver, 7HiPerface SKS52 ...	

Industrial gear motors ensure the optimization of speed and torque. With the KEB COMBIGEAR program, a fully modular system is available in

- helical inline-
- helical shaft mounted-
- helical bevel-
- helical worm gear

Key features of the range are the finely graduated ratios, compact constructions and robust cast iron housings.

Tuned to the KEB COMBIVERT F5 inverter, these units are ideal for complete system solutions up to 55 kW.

High dynamics combined with minimal backlash are the main requirements for servo applications. KEB synchronous motors in combination with powerful planetary gears or the gearboxes from the KEB COMBIGEAR range fulfil these requirements to give a cost effective solution.

With KEB DRIVE, an efficient product configurator is available for the selection of the optimal variant for your applications.



# Headquarters

## KEB - Karl E. Brinkmann GmbH

Försterweg 36 - 38 • D - 32683 Barntrop  
Telefon +49 5263 401-0 • Telefax 401-116  
Internet: [www.keb.de](http://www.keb.de) • E-Mail: [info@keb.de](mailto:info@keb.de)

KEB Antriebstechnik GmbH • Geared Motors  
Wildbacher Straße 5 • D - 08289 Schneeberg  
Telefon +49 3772 67-0 • Telefax 67-281  
Internet: [www.keb-drive.de](http://www.keb-drive.de) • E-Mail: [info@keb-drive.de](mailto:info@keb-drive.de)

## COMPANIES

### AUSTRIA

KEB Antriebstechnik  
Austria GmbH  
Ritzstraße 8  
A - 4614 Marchtrenk  
Tel: +43 7243 53586-0  
Fax: +43 7243 53586-21  
E-mail: [info@keb.at](mailto:info@keb.at)  
Internet: [www.keb.at](http://www.keb.at)

### CHINA

KEB Power Transmission  
Technology (Shanghai) Co. Ltd.  
No. 435 QianPu Road  
Songjiang East Industrial Zone  
CN-201611 Shanghai, P.R. China  
Tel: +86 21 37746688  
Fax: +86 21 37746600  
E-mail: [info@keb.cn](mailto:info@keb.cn)  
Internet: [www.keb.cn](http://www.keb.cn)

### FRANCE

Société Française KEB  
Z.I. de la Croix St. Nicolas  
14, rue Gustave Eiffel  
F - 94510 LA QUEUE EN BRIE  
Tel: +33 149620101  
Fax: +33 145767495  
E-mail: [info@keb.fr](mailto:info@keb.fr)  
Internet: [www.keb.fr](http://www.keb.fr)

### GREAT BRITAIN

KEB (UK) Ltd.  
Morris Close  
Park Farm Industrial Estate  
GB - Wellingborough  
NN8 6 XF  
Tel: +44 1933 402220  
Fax: +44 1933 400724  
E-mail: [info@keb-uk.co.uk](mailto:info@keb-uk.co.uk)  
Internet: [www.keb-uk.co.uk](http://www.keb-uk.co.uk)

### ITALY

KEB Italia S.r.l. Unipersonale  
Via Newton, 2  
I - 20019 Settimo Milanese (Milano)  
Tel: +39 02 3353531  
Fax: +39 02 33500790  
E-mail: [info@keb.it](mailto:info@keb.it)  
Internet: [www.keb.it](http://www.keb.it)

### JAPAN

KEB - Japan Ltd.  
15 - 16, 2 - Chome  
Takanawa Minato-ku  
J - Tokyo 108 - 0074  
Tel: +81 33 445-8515  
Fax: +81 33 445-8215  
E-mail: [info@keb.jp](mailto:info@keb.jp)  
Internet: [www.keb.jp](http://www.keb.jp)

### RUSSIA

KEB CIS ZAO  
Lesnaya str, house 30  
Dzerzhinsky (MO)  
RUS - 140091 Moscow region  
Tel: +7 495 6320217  
Fax: +7 495 6320217  
E-Mail: [info@keb.ru](mailto:info@keb.ru)  
Internet: [www.keb.ru](http://www.keb.ru)

### USA

KEB America, Inc  
5100 Valley Industrial Blvd. South  
USA - Shakopee, MN 55379  
Tel: +1 952 2241400  
Fax: +1 952 2241499  
E-mail: [info@kebameric.com](mailto:info@kebameric.com)  
Internet: [www.kebameric.com](http://www.kebameric.com)

### Representative offices

- Belgium
- Brazil
- Korea
- Spain

### Further partners for ...

Australia • Belgium • Bulgaria • Czech Republic • Denmark • Egypt • Greece • Hungary • India • Indonesia • Iran • Israel • Malaysia • Morocco • Netherlands • New Zealand • Pakistan • Poland • Portugal • Romania • Singapore • Slovakia • South Africa • Spain • Sweden • Switzerland • Taiwan • Thailand • Tunisia • Turkey • Uzbekistan

... under [www.keb.de/en/contact/keb-worldwide.html](http://www.keb.de/en/contact/keb-worldwide.html)

