

# Bornemann multiphase boosting

A change of perspective





# Why do companies buy Bornemann multiphase pumps?

Intelligent upstream systems for the oil and gas industry



// Lat. 24,0 // Long. -78,0 //

## Increased oil recovery with multiphase technology

### Unpredictable flow

The focus is on unpredictable flows, previously considered as unprofitable. Multiphase pumps handle these with ease and at a fraction of the conventional costs.

### Untreated stream

There is a multiphase solution to suit a whole range of potential flows. Untreated products ranging from wet gas to heavy crude are pumped reliably in any situation – off-shore, subsea, thermal, conventional. In addition flaring can be avoided making this byproduct available for profitable use.

### Inaccessible environments

Exploiting oilfields in harsh environments and subsea. Extending the life of dying oilfields in this way is the perfect opportunity to generate a sizeable profit. The comparatively small investment and impressively low maintenance and running costs are the benefits.



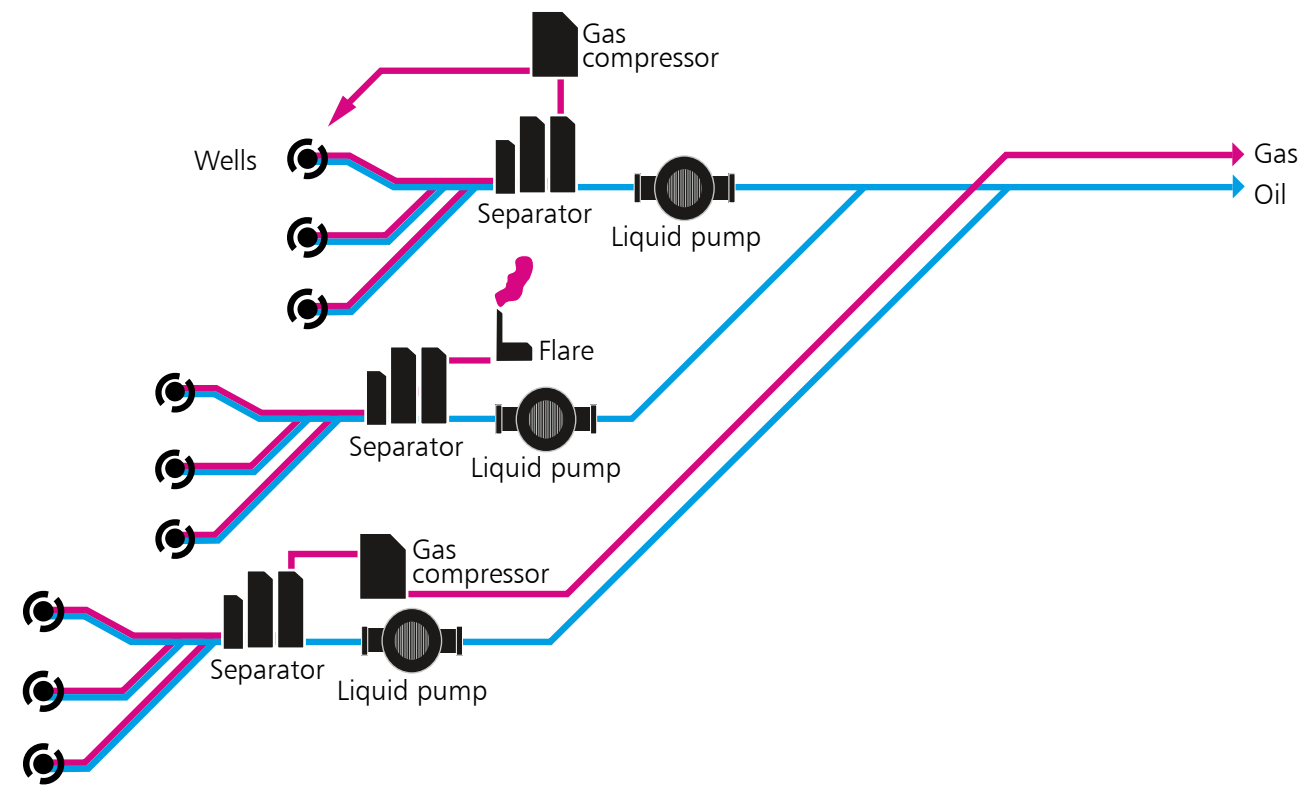
Unique solutions made in multiphase systems



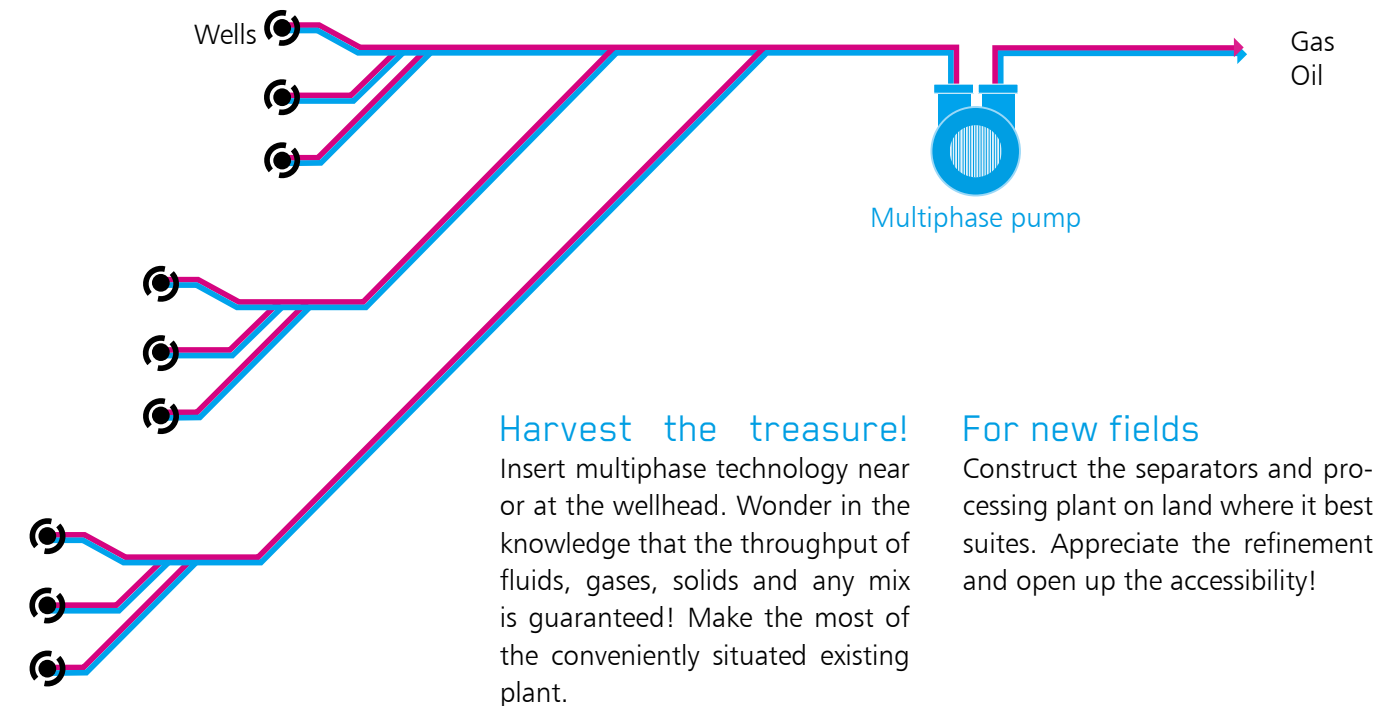
# Less separation

Multiphase makes wellhead separators obsolete and the profit is in your hand

Conventional stream



Untreated stream using Bornemann multiphase technology



**Harvest the treasure!**  
Insert multiphase technology near or at the wellhead. Wonder in the knowledge that the throughput of fluids, gases, solids and any mix is guaranteed! Make the most of the conveniently situated existing plant.

**For new fields**  
Construct the separators and processing plant on land where it best suits. Appreciate the refinement and open up the accessibility!

# Less costs

## Capital investment and operational expenditure down

Multiphase offers cost savings almost everywhere. The only equipment necessary is delivered as a complete fully-functional unit mounted on a skid. Consequently engineering and installation are straightforward and the construction period is shortened.

Coming on stream could not be easier. Just connect the well, multiphase Unit, Pipeline and Power. The proven mechanical seal and system design guarantee that multiphase will satisfy the most stringent environmental requirements and work under full safety without extra investment. The multiphase compact design also requires much smaller land-based installations, resulting in a further saving.

A reduced maintenance program combined with a minimal on-site replacement part store results in further savings. The near maintenance-free installation ensures a reduced manpower requirement and coupled with the high reliability leads to virtually no outage. Keep the oil flowing and maximize your margins!

## Running costs could not be lower

bility leads to virtually no outage. Keep the oil flowing and maximize your margins!



# Minimal impact

Pollution down near zero.  
Land requirements reduced.  
Energy saving



Bornemanns contribution to the environment ...



... to give the nature a chance.

## Multiphase boosting is clean

Due to the unique multiphase pump design there are no leakages of gas or liquid. The energy saved through the use of the previously flared gases is also a contribution to keeping our environment clean.

Separation at source requires costly multi-transport of the separated products. The multiphase principle of transport before separation protects the environment by consuming considerably less energy and using less land. The gases previously flared off are now available e.g. for power generation, sales, gas injection.

Land-based projects: The same straightforward installation and cost savings apply. Whatever the situation – permafrost, desert, jungle – multiphase is the solution.

// Lat. -3,5 // Long. -62,5 //



# The Bornemann multiphase design

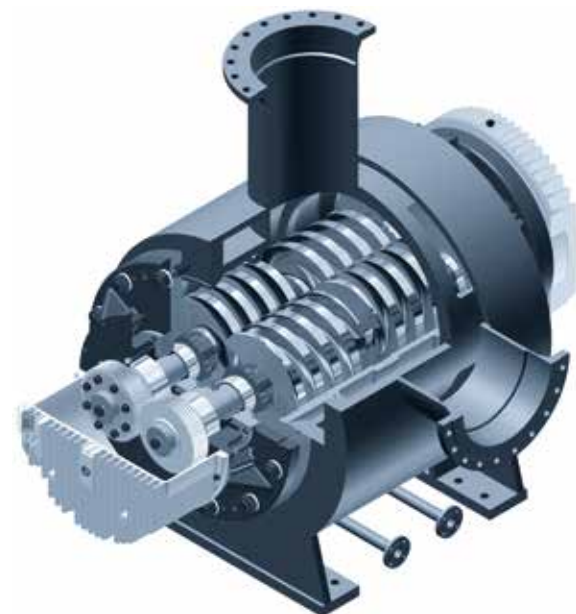
You will get the best solution for your application with our tailor-made pumping screw design

### Select - plug in - pump out

With the benefit of almost 20 years proven experience Bornemann offers customised performance solutions for every situation. In-house design and production and 100% workshop testing guarantee the high performance technology – essential for the oil industry.

### Design range

This highly refined version of the positive displacement principle also employs a patented machining process for the screw manufacture. Performance is a function of screw diameter, pitch and speed. In addition there are special degressive screw geometries available to give a further efficiency saving of up to 25%.



### Standard screw

The unique rotor design enables Bornemann to maintain a short bearing span and compact pump design. The best suitable material selection for the feed screws and shafts in respect to bending and corrosion resistance.



### Degressive screw

Screws with a decreasing pitch. Reliable manufacturing process for screws with decreasing pitch. Proven increase in efficiency for multiphase service. Substantial decrease in Total Cost of Ownership by smaller drive train and lower power consumption.





# From pumps to systems to solutions

Contact, consult, select, trust Bornemann



## Complete multiphase pumping systems

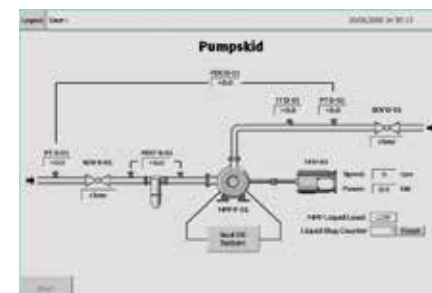
With our experience in research & development, engineering, production and commissioning all over the world we are able to supply complete system solutions – for a wide range of performance conditions and harsh ambient environmental conditions.

## Plug and pump

The skid mounted pump is equipped with all necessary instrumentation and transformer cabinets. You will get a complete system incl. electrical drive system with motor, variable frequency converter and transformer cabinets will undergo a complete system factory acceptance test prior to shipment.



Cairn Energy India - RAVVA onshore terminal



## Safety first

The Bornemann system guarantees full safety and automatic operation under all circumstances.

- ▶ Installation of inlet and outlet fail and fire safe ball valves
- ▶ Automatic shut down in case of out of range measuring value
- ▶ Hard wired emergency chains
- ▶ Constantly monitored multiphase process



# One small step for a man, one giant leap for mankind. Multiphase goes subsea

// Lat. 22,5 // Long. -79,0 //



## Maintenance -free oil extraction at seabed level

Move Bornemann multiphase  
technology closer to the deeper  
and undeveloped resources.



## Conventional recovery

Separation at source, flaring and  
closing down wells with weakened  
output are wasteful and environ-  
mentally unfriendly.



## Straight to the seabed

Multiphase has gone subsea.  
Weather and sea conditions are ir-  
relevant. Prolonged production is  
a reality. The oil industry discovers  
new profit opportunities.



## The change of perspective

Improved high pressure design  
means unlimited water depth.  
Superior execution of pump and  
motor cartridges are leading the  
trend to maintenance-free opera-  
tion. Installations at seabed will  
last a life-time. The oil industry will  
change their perspective.



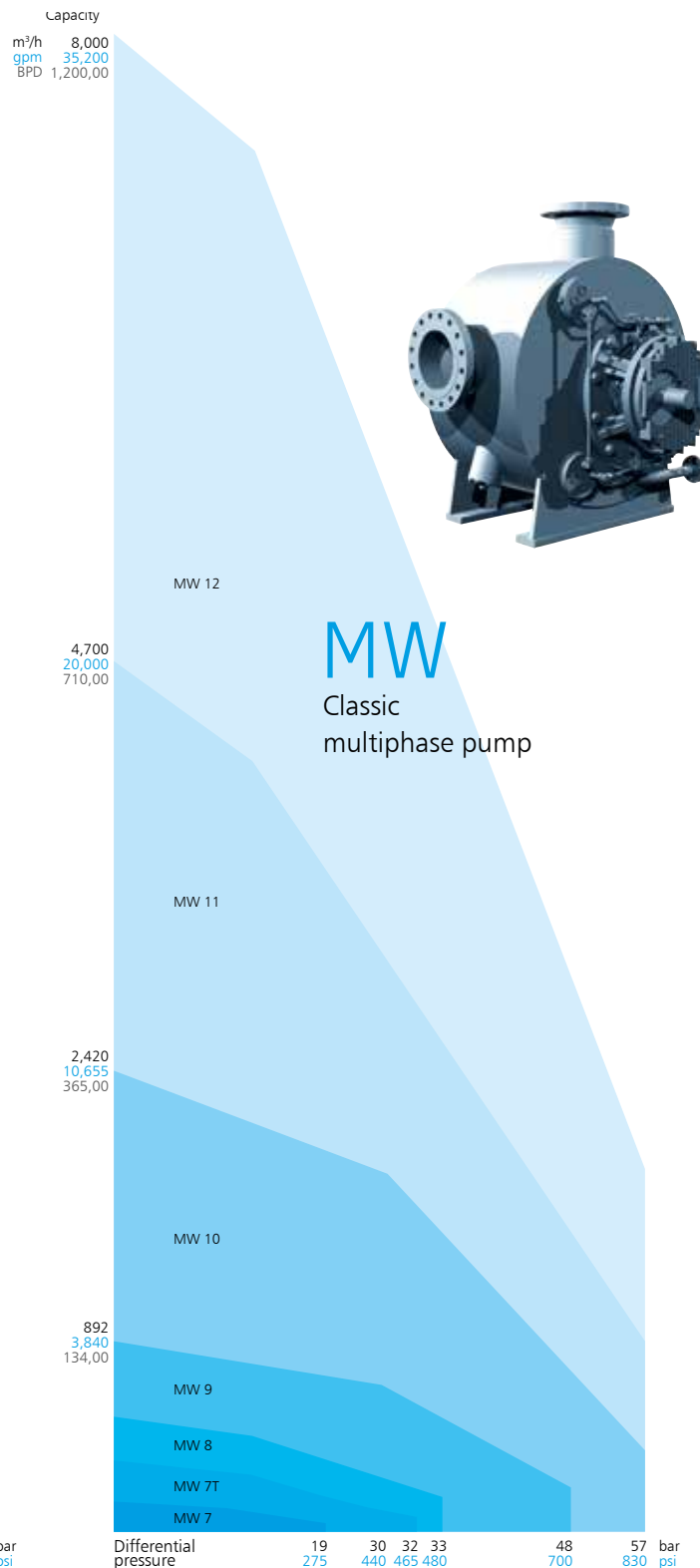
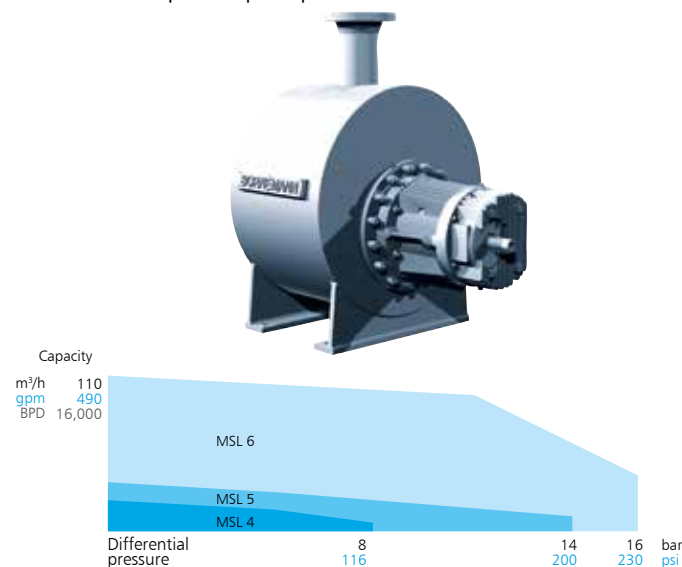
# Our multiphase pumps and their work envelope

## Work envelopes to suite

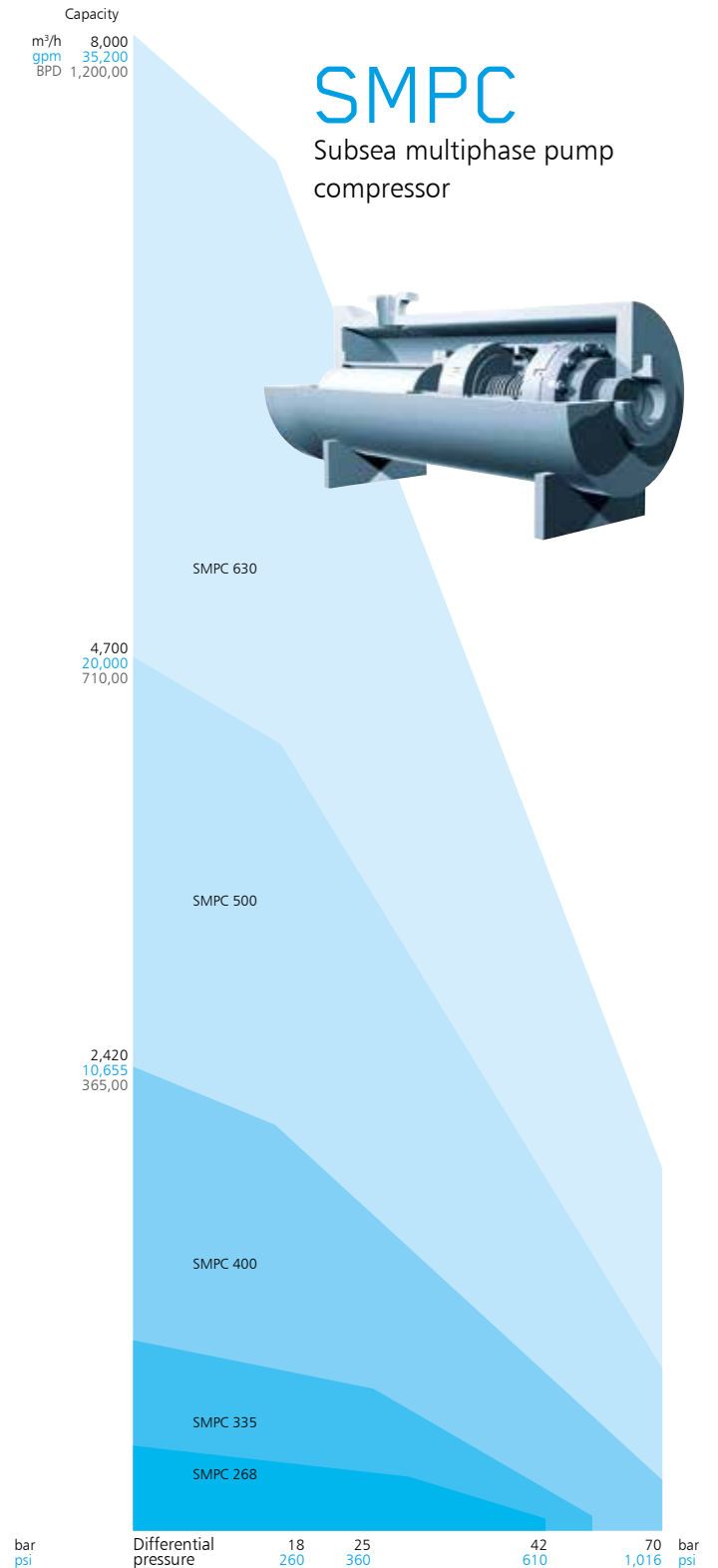
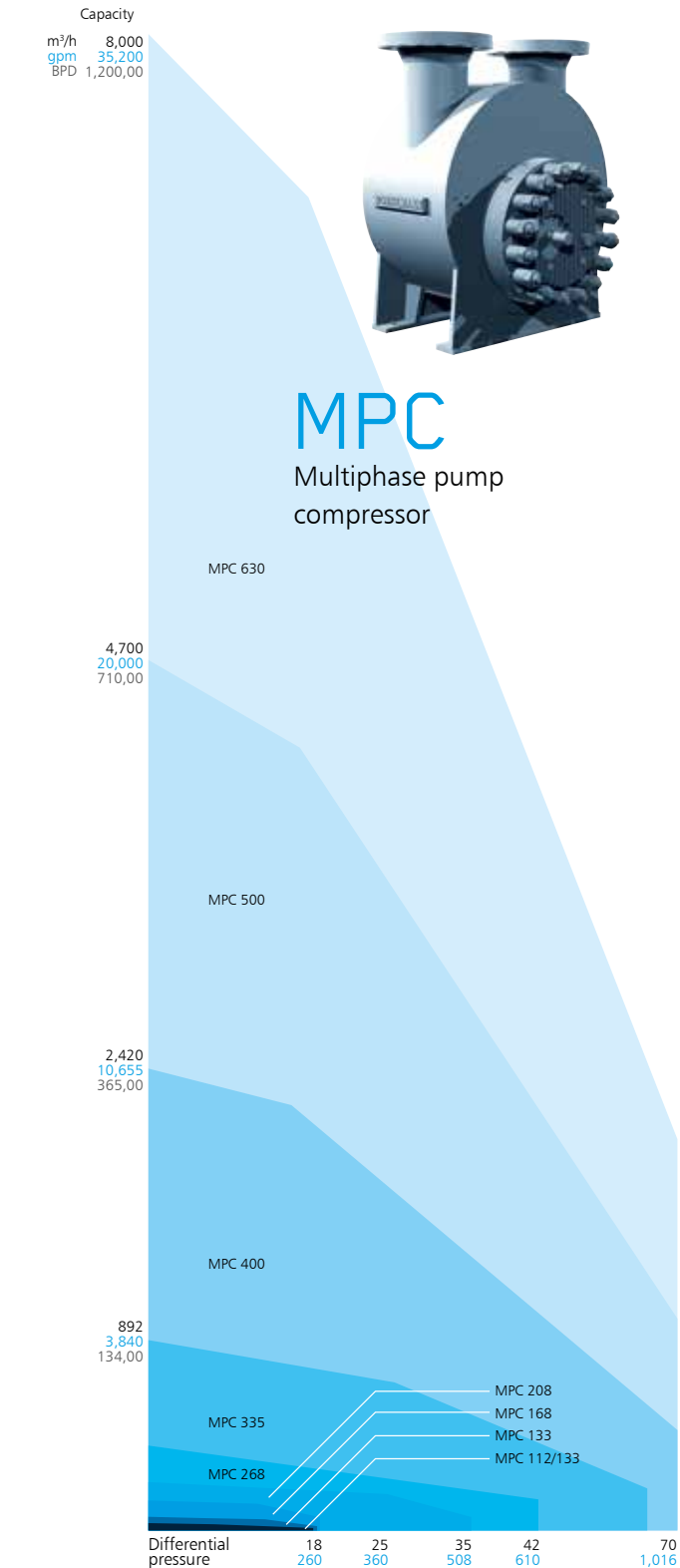
- ▶ Differential pressure: up to 100 bar (1,780 psi)
- ▶ GVF: 0 bis 100%
- ▶ Capacity: 2 to 8,000 m<sup>3</sup>/h (300 to 1,200,000 BPD)
- ▶ Unlimited temperatures and viscosities
- ▶ Inlet pressures down to atmospheric level
- ▶ Pressure rating up to 1,500 lbs
- ▶ All materials, hardened surfaces, and coatings are possible and fulfill common standards such as NACE, PED, ASME, etc. when required.

## MSL

Single well multiphase pump



# envelope





# Bornemann services worldwide

Drive, courage, responsibility, reliability - that's our team spirit. In the desert, at sea, in ice and snow - we are equipped for extremes. Serving you night and day - we have the know-how and maintenance capability



## Maintenance

- ▶ Pump check
- ▶ Inspection
- ▶ Overhaul
- ▶ Multiphase testing
- ▶ Preventive maintenance
- ▶ Condition monitoring

## Service on site

- ▶ Specialist hotline
- ▶ Inspections – pumps & systems
- ▶ Maintenance plans
- ▶ Preventive maintenance
- ▶ Repairs
- ▶ Mechanical seal service

## Spare parts - wear parts

- ▶ Consultant service & advise
- ▶ On-site stocking proposals
- ▶ High availability from central stocks
- ▶ Excellent backlist availability
- ▶ Rapid delivery worldwide
- ▶ Overnight and courier options

## Training

- ▶ Training at Bornemann
- ▶ Training on-site
- ▶ Theory and practice
- ▶ Clear and complete training documentation
- ▶ Systematic operation; maintenance; trouble shooting procedures

## Repair shop

- ▶ Rapid job completion
- ▶ Damage and wear inspection
- ▶ Quotes for repair services
- ▶ Optimization of capacity rates for each specific application
- ▶ Adaption of pumps for changed applications
- ▶ Test bed check and performance certificate as standard
- ▶ Pick up and delivery service

## Service line

- ▶ +49 5724 390-100
- ▶ [service@bornemann.com](mailto:service@bornemann.com)



Left side: training and maintenance on-site cost-effective and immediate / multiphase testbed. Above: on-site service



# Seven of the best

## Our credentials



### Lukoil

- ▶ Siberia, Russia
- ▶ Harsh environmental installation
- ▶ 100 Installations
- ▶ Capacity up to 500 m<sup>3</sup>/h  
75,757 BPD
- ▶ GVF 96%



### BP

- ▶ BP King – Gulf of Mexico
- ▶ Subsea installation
- ▶ Installed in 2007
- ▶ Fluid multiphase mixture
- ▶ Capacity 485 m<sup>3</sup>/h  
73,484 BPD
- ▶ Water depth 1,700 m
- ▶ GVF up to 98%



### RWE-DEA

- ▶ Mittelplate – Germany
- ▶ MPC 335
- ▶ Installed in 2005
- ▶ Fluid multiphase mixture
- ▶ Capacity 470 m<sup>3</sup>/h  
71,212 BPD
- ▶ GVF up to 74%



### Wintershall Noordzee

- ▶ P12 South West
- ▶ MPC 268
- ▶ Installed in 2005
- ▶ Fluid multiphase mixture
- ▶ Capacity 610 m<sup>3</sup>/h  
92,424 BPD
- ▶ GVF 99%



### CNRL / Esso / Imperial oil

- ▶ Thermal fields in Canada
- ▶ 148 pumps in operation
- ▶ Fluid multiphase mixture
- ▶ Capacity up to 2,000 m<sup>3</sup>/h  
303,030 BPD
- ▶ GVF 99%

### PDVSA

- ▶ Nearly 80 pumps in operation
- ▶ Fluid multiphase mixture
- ▶ Capacity up to 768 m<sup>3</sup>/h  
116,363 BPD
- ▶ GVF up to 99%
- ▶ Heavy crude oil

### Cairn Energy

- ▶ Ravva Terminal – India
- ▶ Installed in 2007
- ▶ Fluid multiphase mixture with H<sub>2</sub>S
- ▶ Capacity 2,414 m<sup>3</sup>/h  
365,757BPD
- ▶ GVF 95 %





# Unique solutions made by the specialist



## ITT Bornemann GmbH

Industriestraße 2  
31683 Obernkirchen  
Germany  
Fon: +49 5724 390-0  
Fax: +49 5724 390-290  
info@bornemann.com  
www.bornemann.com



Germany – Headquarter

## Canada

### Bornemann Inc.

320 441, 5th Avenue S.W.  
Calgary, Alberta  
Canada T2P 2V1  
CANADA  
Fon: +1 403 294 0777  
Fax: +1 403 262 4073  
info.ca@bornemann.com  
www.bornemann-ca.com

## USA

### ITT Bornemann USA, Inc.

10375 Richmond Avenue,  
Suite 1575  
TX 77042 Houston  
UNITED STATES OF AMERICA  
Fon: +1 832 320 2500  
info.usa@bornemann.com  
www.bornemann-usa.com

## Argentina

### Bombas Bornemann S.R.L.

Mariano Moreno 4380  
B1605BOD Munro  
Prov. Buenos Aires  
ARGENTINA  
Fon: +54 11 475 680 08  
Fax: +54 11 475 655 41  
info.ar@bornemann.com  
www.bornemann-ar.com

## Mexico

### Bornemann S.A. de C.V.

Mariano Escobedo 510 piso 12 y PH 33  
11590 Col. Anzures, Distrito Federal  
MEXICO  
Fon: +52 55 2000 0589  
info.mx@bornemann.com  
www.bornemann-mx.com

## Singapore

### Bornemann Pumps Asia Pte. Ltd.

10 Jalan Kilang #06-01 Sime Darby  
Enterprise Centre  
159410 Singapore  
SINGAPORE  
Fon: +65 6561 4882  
Fax: +65 6561 6784  
info.sg@bornemann.com  
www.bornemann-sg.com

## China

### Bornemann Pumps & Systems (Tianjin) Co., Ltd.

Jinbin General Building No. 6,  
No. 45 Muning Road  
TEDA, Tianjin  
P. R. China 300457  
CHINA  
Fon: +86 22 662 978 00  
Fax: +86 22 253 267 99  
info.service@bornemann-cn.com  
www.bornemann-cn.com

## Bornemann Pumps International Tianjin

Room 1101  
Tianjin Binjiang International Hotel  
No. 105 Jianshe Road  
Heping District, Tianjin  
CHINA  
Fon: +86 22 5881 2997  
Fax: +86 22 5881 2996  
info.sales@bornemann-cn.com  
www.bornemann-cn.com

## UAE

### Bornemann Middle East FZE

Dubai Airport Freezone  
Office 530 / 6WA West Wing  
PO Box 293 582  
Dubai  
UNITED ARAB EMIRATES  
Fon: +971 4 214 6511  
Fax: +971 4 214 6512  
info.ae@bornemann.com  
www.bornemann-ae.com