

R RENOWNED
KNOW-HOW

Selection guide

Linear Technology



RK ROSE+KRIEGER

A Phoenix Mecano Company



Reliable movements

Guiding, adjustment, positioning or uniform motion, the requirements for linear motion operations are as numerous as the solutions. We offer you a wide spectrum of linear motion components, starting with an occasional manual movement, as well as frequent operation, through to continuous high dynamic positioning.

In order for you to preselect the most suitable range quick and easy, we have developed a system which is strictly application orientated. You can determine the most suitable size and design based on your performance requirements from within the range. We are always here, of course, to assist you personally with your selection.

Why try for so long...



**...when it's quicker
with our system**

The four steps to your product recommendation

Step 1: The application is always the focus



- Width, length and height adjustment
- Loading and unloading, palletising, pick & place
- Numerically controlled operation tasks

Step 2: Which product design do you want?



- Rodless style (Linear actuator)
- Rodstyle (E-cylinder, lifting column)

Step 3: What features should the product have?



- Guide
- Drive
- Guide + drive

Step 4: Which performance category do you require?

- Travel
- Load
- Speed
- Accuracy
- etc.

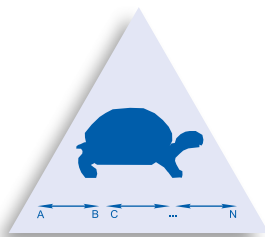
...follow our system and the terms are self explanatory.

The RK Linear Circle



Features:

- ✓ Manual or electric drive
- ✓ Occasional to daily multiple adjustment
- ✓ Low duty cycle
- ✓ Low speed
- ✓ Moderate to high stability



Place-Tec

continue on page 8

Move-Tec

continue on page 6

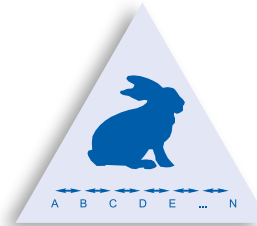
**Your appli
takes centr**



Loading and unloading,
palletising, pick & place

Features:

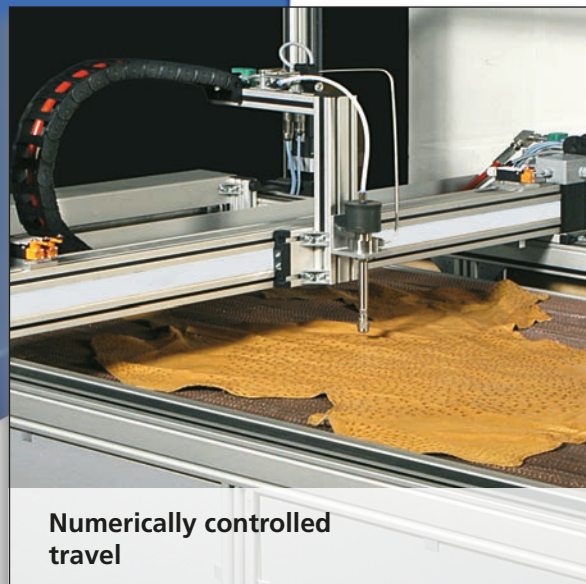
- ✓ High repeatability
- ✓ Short cycle time
- ✓ High number of cycles
- ✓ 3-shift operation
- ✓ High reliability



ation
e stage

Control-Tec

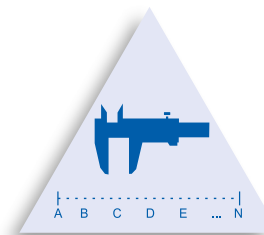
continue on page 10



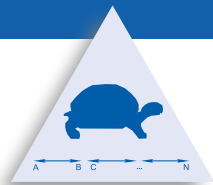
Numerically controlled
travel

Features:

- ✓ High positioning accuracy
- ✓ Uniform motion
- ✓ High drive stiffness
- ✓ 3 shift operation
- ✓ IP40 protected



Move-Tec Width, length and height adjustment



Rodless style
(up to 6 m travel)

Rod style
(up to 2 m travel)

Guide

Drive + Guide
(Linear actuator)

Drive
(E-cylinder)

Drive + Guide
(Lifting columns)

Single tube actuator

RK LightUnit
Travel max: 920 mm
Fx max: 300 N
Fy max: 550 N
Fz max: 1,210 N

E
Travel max: 2,740 mm
Fx max: 4,500 N
Fy max: 5,500 N
Fz max: 5,650 N

Twin tube

RE
Travel max: 3,000 mm
Fy max: 600 N
Fz max: 2,400 N

Twin tube

EP(X)
Travel max: 2760 mm
Fx max: 4,500 N
Fy max: 14,000 N
Fz max: 9,100 N

Cylinder performance class 1

M9 E-cylinder
Travel: 50 mm
Fd max: 300 N
Fz max: 300 N
Vmax: 14 mm/s

O10 E-cylinder
Travel max: 100 mm
Fd max: 500 N
Fz max: 500 N
Vmax: 22 mm/s

O15 E-cylinder
Travel max: 140 mm
Fd max: 1,000 N
Fz max: 1,000 N
Vmax: 100 mm/s

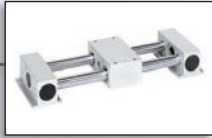
Multilift
Travel max: 498 mm
Fd max: 3,000 N
Fz max: 1,000 N
Vmax: 16 mm/s

Multilift II
Travel max: 497 mm
Fd max: 3,000 N
Fz max: 3,000 N
Vmax: 16 mm/s

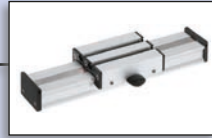
Two-stage

RK Slimlift
Travel max: 500 mm
Fd max: 4,000 N
Fz max: 2,000 N
Vmax: 32 mm/s

guides



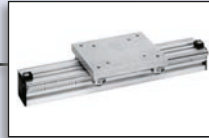
RC
Travel max: 2,250 mm
Fy max: 3500 N
Fz max: 5,200 N



PLM-G
Travel max: 2,935 mm
Fy max: 200 N
Fz max: 220 N



RK Compact-G
Travel max: 400 mm
Fy max: 1,150 N
Fz max: 1,150 N



SQL
Travel max: 5,750 mm
Fy max: 2,500 N
Fz max: 1,500 N



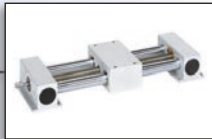
PL
Travel max: 5,860 mm
Fy max: 2,550 N
Fz max: 2,550 N



RK DuoLine R
Travel max: 7,692 mm
Fy max: 5,100 N
Fz max: 8,900 N

Profile guides

actuators



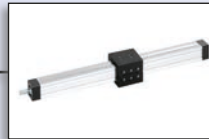
COPAS
Travel max: 2,250 mm
Fx max: 1,600 N
Fy max: 3,500 N
Fz max: 5,200 N



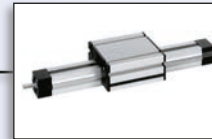
PLM
Travel max: 855 mm
Fx max: 125 N
Fy max: 200 N
Fz max: 220 N



RK Compact
Travel max: 400 mm
Fx max: 215 N
Fy max: 1,150 N
Fz max: 1,150 N



quad® EV
Travel max: 2,850 mm
Fx max: 2,500 N
Fy max: 6,000 N
Fz max: 6,000 N



PLS
Travel max: 3,000 mm
Fx max: 3,050 N
Fy max: 2,550 N
Fz max: 2,550 N



RK DuoLine S
Travel max: 2,984 mm
Fx max: 3,400 N
Fy max: 5,000 N
Fz max: 6,000 N

Profile actuators

Cylinder performance class 2



LAMBDA E-cylinder
Travel max: 600 mm
Fd max: 6,000 N
Fz max: 4,000 N
Vmax: 21 mm/s



LZ 60 E-cylinder
Travel max: 597 mm
Fd max: 4,000 N
Fz max: 4,000 N
Vmax: 85 mm/s



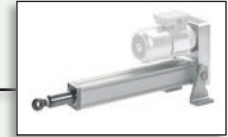
LZ 70 TR PL E-cylinder
Travel max: 1,000 mm
Fd max: 5,000 N
Fz max: 5,000 N
Vmax: 48 mm/s



LZ 80 E-cylinder
Travel max: 1,005 mm
Fd max: 10,000 N
Fz max: 10,000 N
Vmax: 25 mm/s



SLZ 63 TR FL/PL E-cylinder
Travel max: 1,005 mm
Fd max: 15,000 N
Fz max: 15,000 N
Vmax: 58 mm/s



SLZ 90 E-cylinder
Travel max: 2,000 mm
Fd max: 25,000 N
Fz max: 25,000 N
Vmax: 77 mm/s

Heavy load cylinder

lifting columns



RK Powerlift
Travel max: 500 mm
Fd max: 3,000 N
Fz max: 3,000 N
Vmax: 50 mm/s



RK Multilift II telescope
Travel max: 650 mm
Fd max: 1,600 N
Fz max: 800 N
Vmax: 30 mm/s



RK Powerlift telescope
Travel max: 650 mm
Fd max: 1,600 N
Fz max: 800 N
Vmax: 30 mm/s



Alpha Colonne
Travel max: 700 mm
Fd max: 3,000 N
Fz max: 3,000 N
Vmax: 18 mm/s



LAMBDA Colonne
Travel max: 600 mm
Fd max: 4,500 N
Fz max: 4,500 N
Vmax: 20 mm/s

Multiple-stage lifting columns

For detailed information, sizing, accessories, motors and controls please look in our main catalogue 'Linear Technology'



Rodless style
(up to 6 m travel, D-Line 50 m travel)


Rod style
(up to 30 m travel)

Guide


Drive + Guide
(Linear actuator)

Drive + Guide
(Linear actuator)

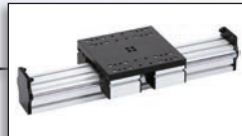
Roller guides



PL
Travel max: 5,860 mm
Fy max: 2,550 N
Fz max: 2,550 N
v max: 10 m/s
a max: 20 m/s²

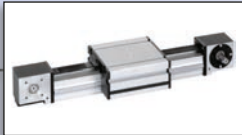


SQ
Travel max: 5,850 mm
Fy max: 2,550 N
Fz max: 2,550 N
v max: 10 m/s
a max: 20 m/s²

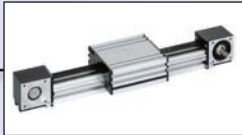


LM
Travel max: 5,670 mm
Fy max: 7,000 N
Fz max: 7,000 N
v max: 10 m/s
a max: 20 m/s²

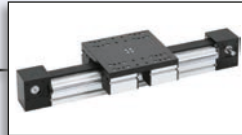
Roller guide actuators



PLZ
Travel max: 5,808 mm
Fx max: 2,810 N
Fy max: 2,550 N
Fz max: 2,550 N
v max: 10 m/s
a max: 20 m/s²
Repeatability ± 0,05 mm



SQZ
Travel max: 5,898 mm
Fx max: 2,810 N
Fy max: 2,550 N
Fz max: 2,550 N
v max: 10 m/s
a max: 20 m/s²
Repeatability ± 0,05 mm



LMZ
Travel max: 5,700 mm
Fx max: 3,400 N
Fy max: 7,000 N
Fz max: 7,000 N
v max: 10 m/s
a max: 20 m/s²
Repeatability ± 0,05 mm

Roller guide actuators



SQ MT
Travel max: 17,446 mm
Fx max: 2,810 N
Fy max: 2,550 N
Fz max: 2,550 N
v max: 10 m/s
a max: 20 m/s²
Repeatability ± 0,05 mm



SQ ZST
Travel max: 29,530 mm
Fx max: 1,132 N
Fy max: 2,550 N
Fz max: 2,550 N
v max: 5 m/s
a max: 20 m/s²
Repeatability ± 0,05 mm

Ball return guides



MultiLine R

Travel max: 5,620 mm
 Fy max: 10,000 N
 Fz max: 10,000 N
 v max: 5 m/s
 a max: 50 m/s²

RK DuoLine R

Travel max: 7,692 mm
 Fy max: 5,100 N
 Fz max: 8,900 N
 v max: 5 m/s
 a max: 50 m/s²

Ball return rails actuators



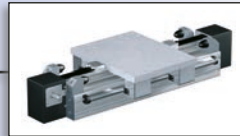
MultiLine

Travel max: 5,620 mm
 Fx max: 4,700 N
 Fy max: 10,000 N
 Fz max: 10,000 N
 v max: 5 m/s
 a max: 50 m/s²
 Repeatability $\pm 0,05$ mm

RK DuoLine Z

Travel max: 9,010 mm
 Fx max: 6,000 N
 Fy max: 5,100 N
 Fz max: 8,900 N
 v max: 5 m/s
 a max: 50 m/s²
 Repeatability $\pm 0,05$ mm

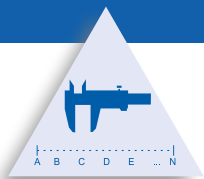
Heavy duty actuators



D-Line (on request)

Travel max: 50,000 mm
 Fx max: 4,700 N
 Fy max: 10,000 N
 Fz max: 10,000 N
 v max: 5 m/s
 a max: 50 m/s²
 Repeatability $\pm 0,1$ mm

For detailed information,
 sizing, accessories,
 motors and controls
 please look in
 our main catalogue
 ‚Linear Technology‘



Rodless style
(up to 4,4 m travel)

Guide + Drive
(Linear actuator)

Ball return rails actuators



DuoLine S
 Travel max: 4,440 mm
 Fx max: 8,000 N
 Fy max: 5,100 N
 Fz max: 8,900 N
 Mx max: 500 Nm
 My max: 1,200 Nm
 Mz max: 1,150 Nm
 v max: 2.5 m/s
 a max: 20 m/s²
 Positioning ability $\pm 0,05$ mm

Rod style
(up to 2 m travel)

Drive
(E-cylinder)

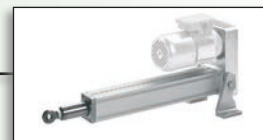
Heavy load cylinder



LZ 70 FL/PL E-cylinder
 Travel max: 1,000 mm
 Fd max: 5,000 N
 Fz max: 5,000 N
 v max: 1.000 mm/s
 Positioning accuracy $\pm 0,05$ mm



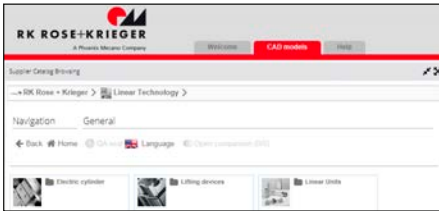
SLZ 63 KG FL/PL E-cylinder
 Travel max: 1,000 mm
 Fd max: 10,000 N
 Fz max: 10,000 N
 v max: 1,250 mm/s
 Positioning accuracy $\pm 0,05$ mm



SLZ 90 E-cylinder
 Travel max: 1.900 mm
 Fd max: 25,000 N
 Fz max: 25,000 N
 v max: 933 mm/s
 Positioning accuracy $\pm 0,1$ mm

For detailed information, sizing, accessories, motors and controls please look in our main catalogue „Linear Technology“

Our service



What we can do for you:

CAD-component library (Part server)

To support your design work we offer component data free of charge in the Rose+Krieger-component library (drawings, technical descriptions). About 60 different file formats (2D/3D) can be selected here.



RK-Infomobile – the exhibition at your location

Over 20 presentation boards with exhibits and functional examples, as well as many applications of drive and linear technology to give you a complete overview of RK products.



RK-Field service - Advice on site

Our Key Account managers and sales consultants are happy to visit you on site and help you draw up concrete proposals for practical solutions.

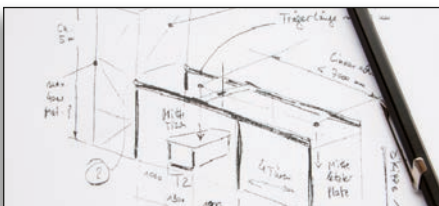


RK-website

On our website you will find lots of information about our company and our products. You will also find your contact partner in your area and the latest catalogue data (in PDF format) to download.

www.rk-rose-krieger.com

Do you need to focus your resources on other tasks and are you looking for a competent partner you can rely on? Working in close collaboration with you, our specialists will develop solutions tailor-made to meet your needs. If you wish, we can also assemble and commission the units on site.



Just make a sketch of your requirements



Our product specialists will devise a solution for you



We can deliver your turnkey solution or assemble and commission it for you on site

R RENOWNED
KNOW-HOW

**LINEAR-
PROFILE-
CONNECTING-
MODULE-
TECHNOLOGY**



RK ROSE+KRIEGER

A Phoenix Mecano Company

Postfach 15 64
D-32375 Minden
Tel.: +49 5 71 93 35-0
Fax: +49 5 71 93 35-119
info@rk-online.de
www.rk-rose-krieger.com