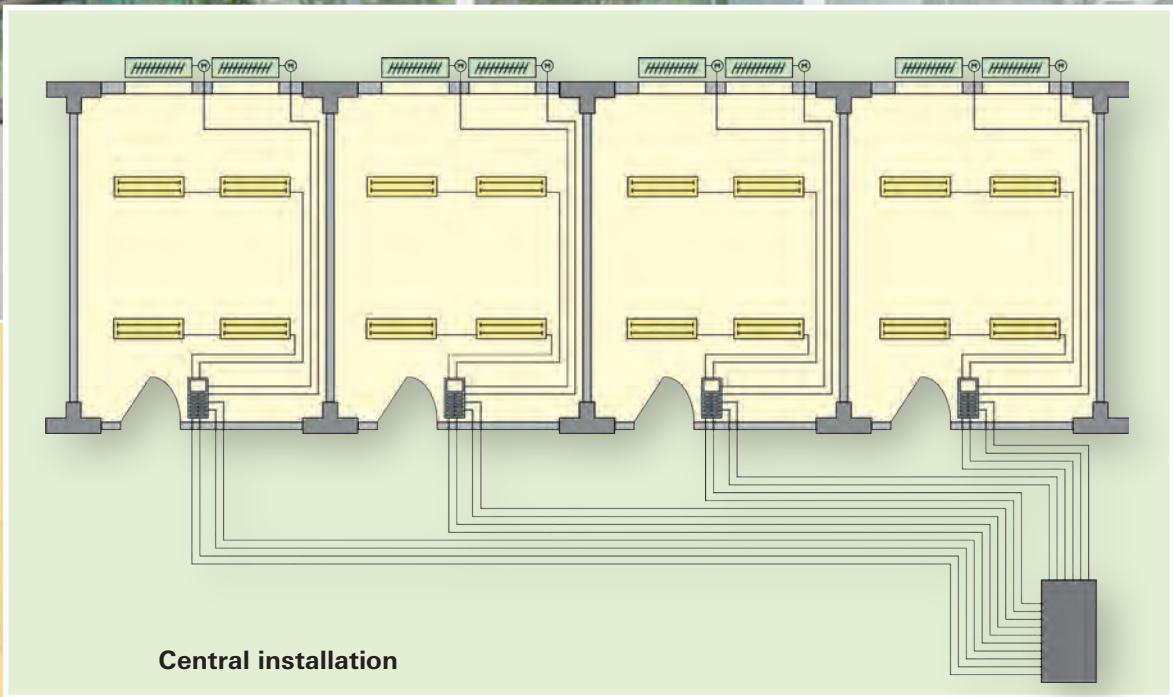
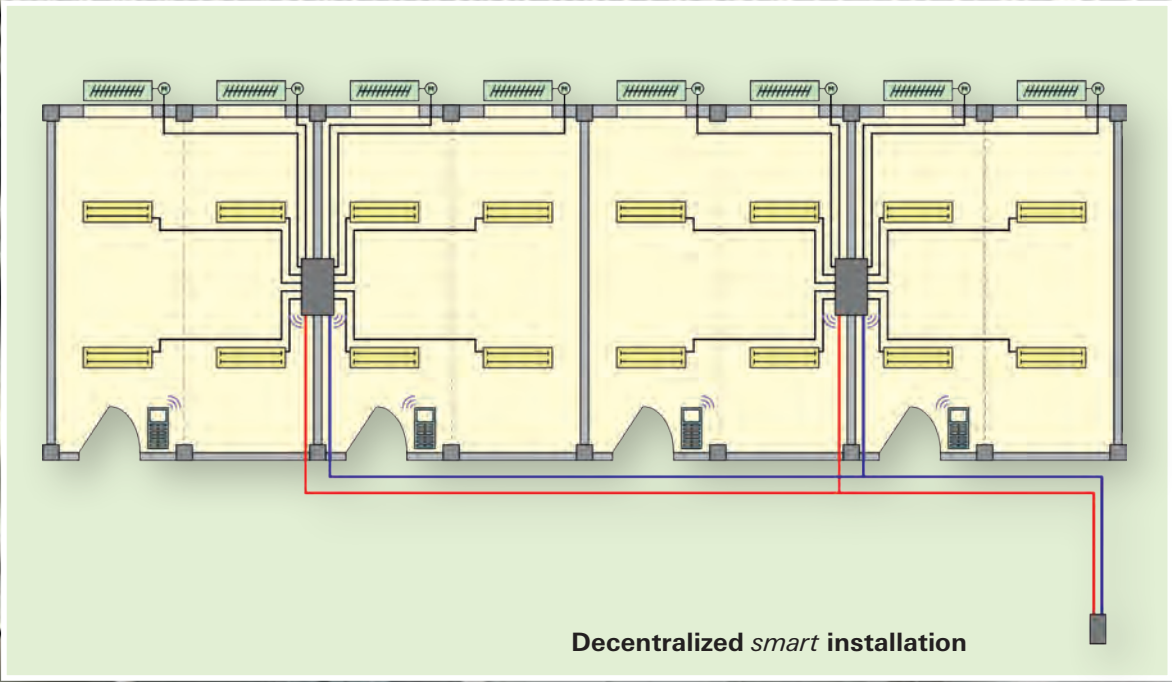
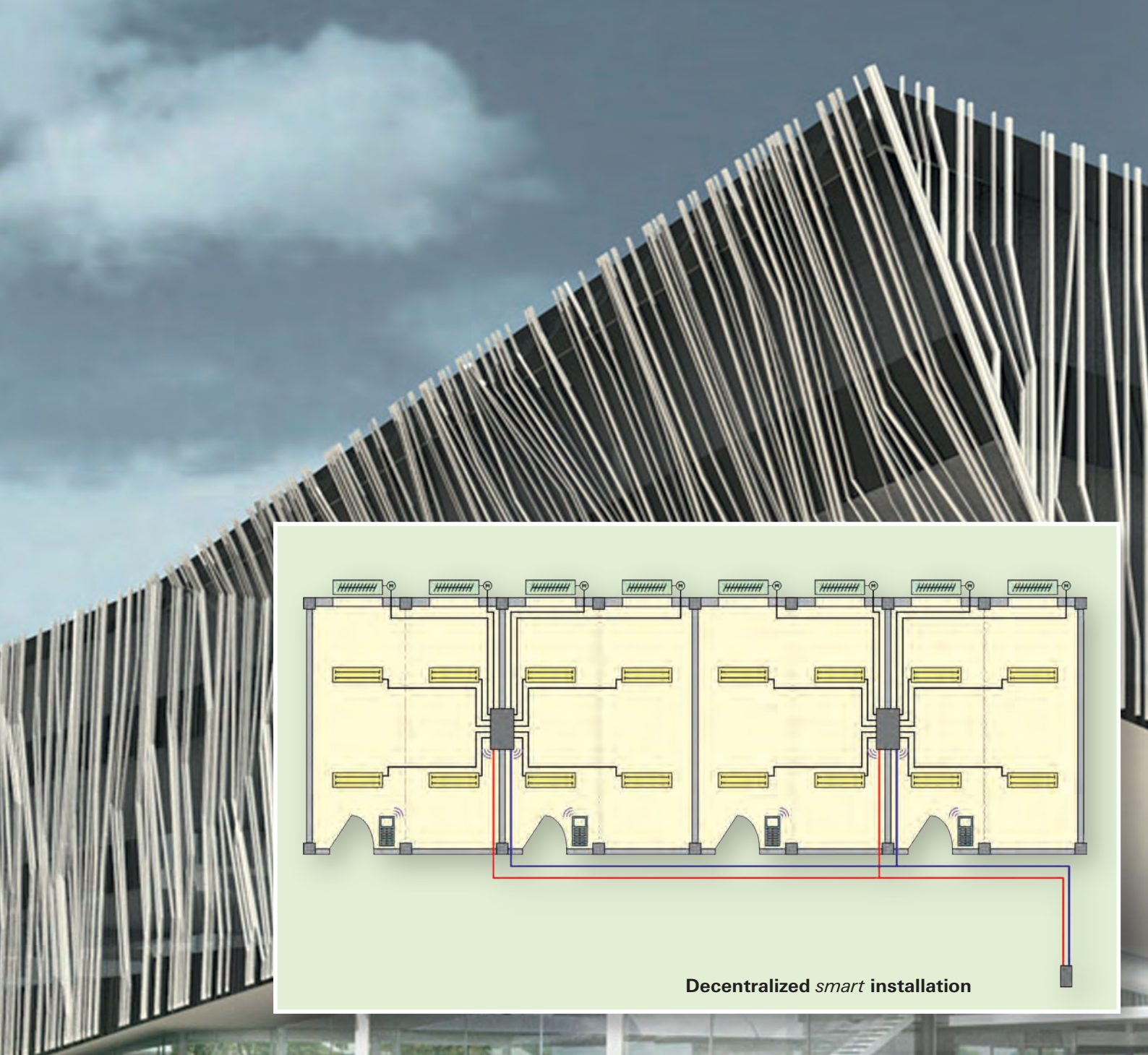


gesis[®] FLEX

Decentralized room automation
Modular – Compact – Pluggable





gesis® FLEX

Room automation for the future

In terms of flexibility, safety, and efficiency, decentralized room automation already sets the standard.

With the modular and extremely flexible system **gesis® FLEX** Wieland Electric provides a TOP solution for the control of sunblinds, shading, lighting, heating, cooling, ventilation, integration of buttons, and many more requirements in room and building automation.

The consistent use of the standardizes systems KNX, EnOcean, DALI and SMI for the compact and entirely pluggable devices increases the profitability and sustainability of any property.



powered by: **light+building**
 gesis® FLEX in combination with gesis® NRG



gesis® FLEX Highlights

The design makes all the difference

Versatile

- 15 different extension modules available
- EnOcean and SMI Gateway
- Fan coil control

Compact

- Flat design
- Fits into any installation space (floor, wall, ceiling)
- Easy integration into new and renovated buildings

Modular

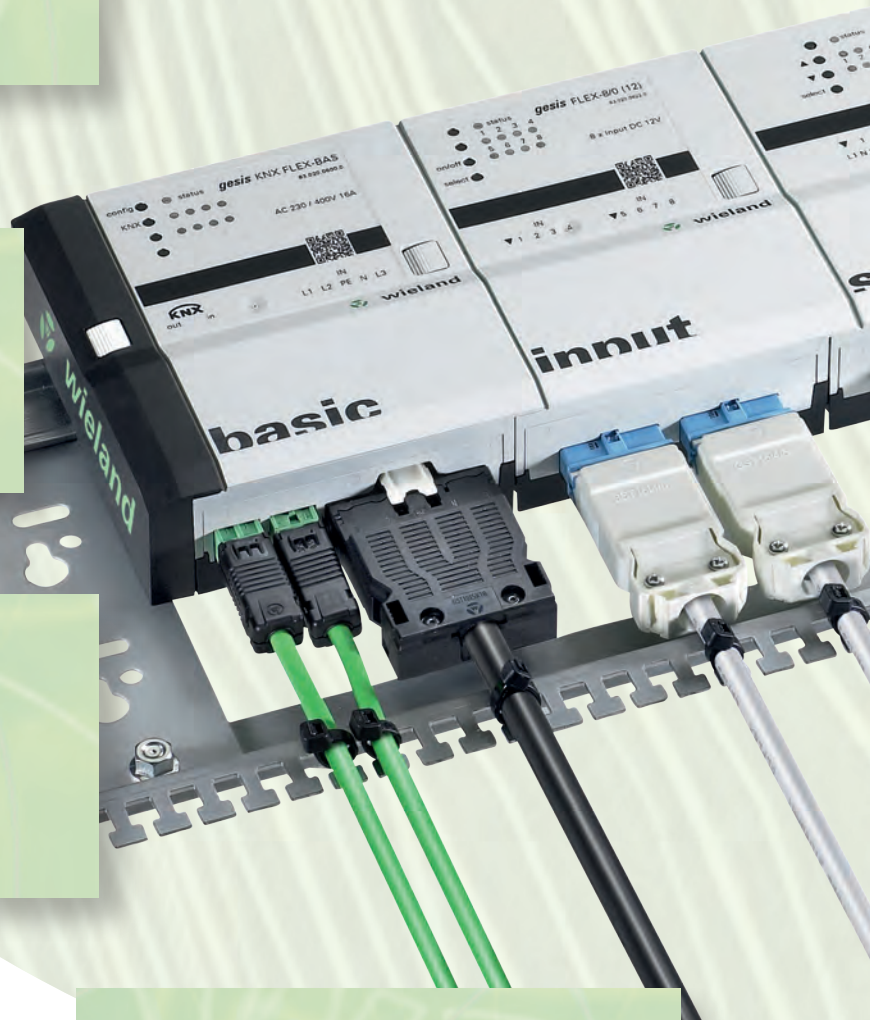
- Only required functions are installed
- Only one physical address
- 6 extension modules per base module, optional assignment

Easy to engineer

- Modular planning
- Standardized functions
- Standard modules – no project-specific products
- No wiring plans required

Easy to install

- Optimum installation in false floor or on/under cable duct
- All cables from one side
- Quick mounting accessories

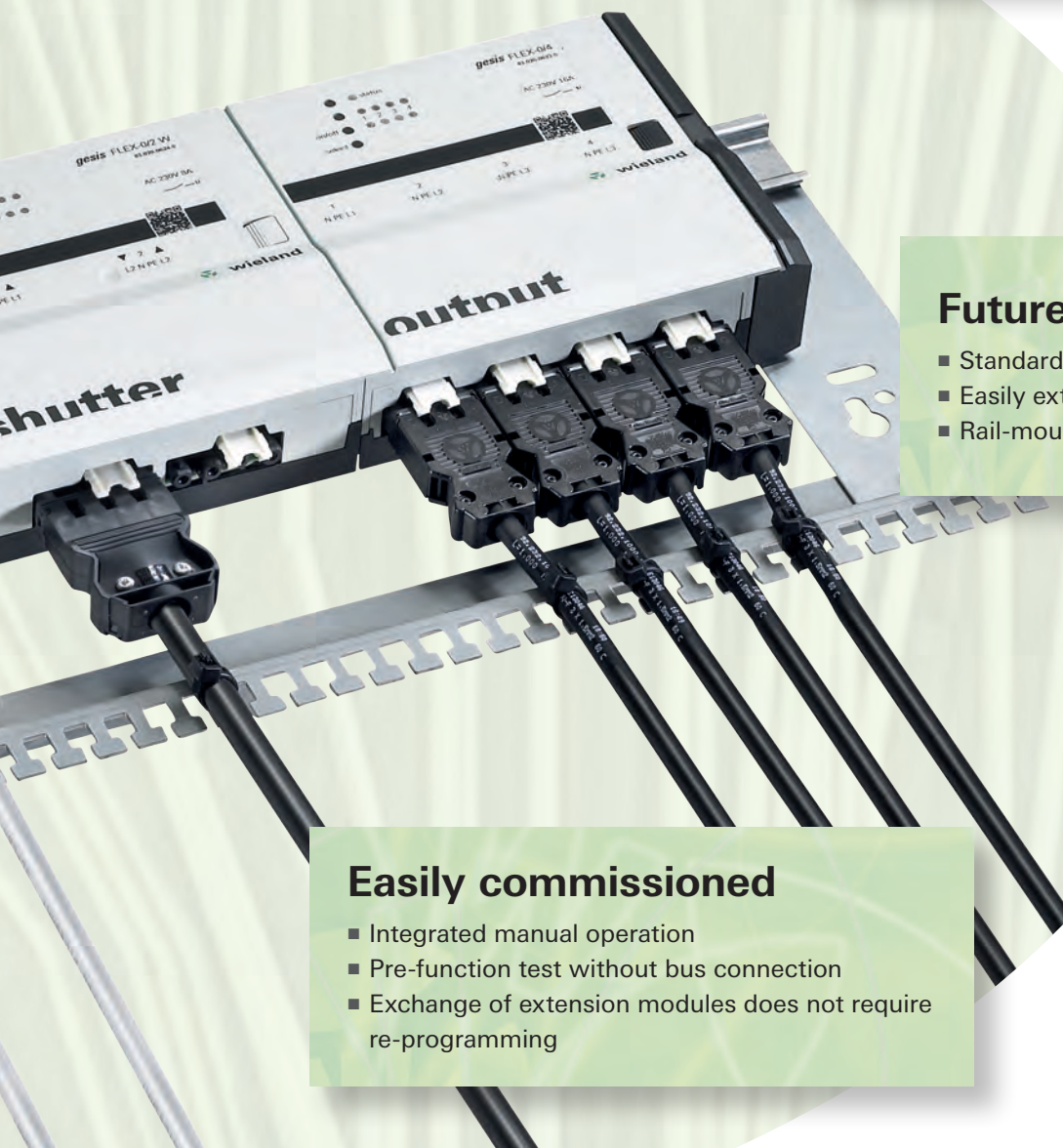


Pluggable

- 100 % pluggable modular system
- Pluggable input/output cables
- Quick and error-free installation

Decentralized

- Significantly reduced cable lengths
- Full functionality during bus failure
- Smaller sub-distribution / utility rooms



Future-proof

- Standardized systems
- Easily extendable due to pluggability
- Rail-mounted devices can be integrated

Easily commissioned

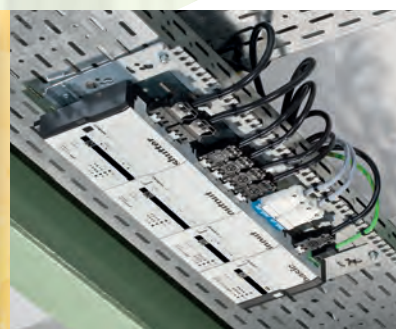
- Integrated manual operation
- Pre-function test without bus connection
- Exchange of extension modules does not require re-programming



enocean®



Ceiling



Cable tray



Floor



Offices/Functional Buildings

Application

Compact, modular, and pluggable electrical installation and room automation for

- Offices
- Meeting rooms
- Laboratory and testing facilities
- Canteens

Solutions

- Decentralized, modular room automation with **gesis® FLEX**
- Daylight-dependent lighting control
- Local and centralized sunshade control
- Installation solutions for floor/wall/ceiling

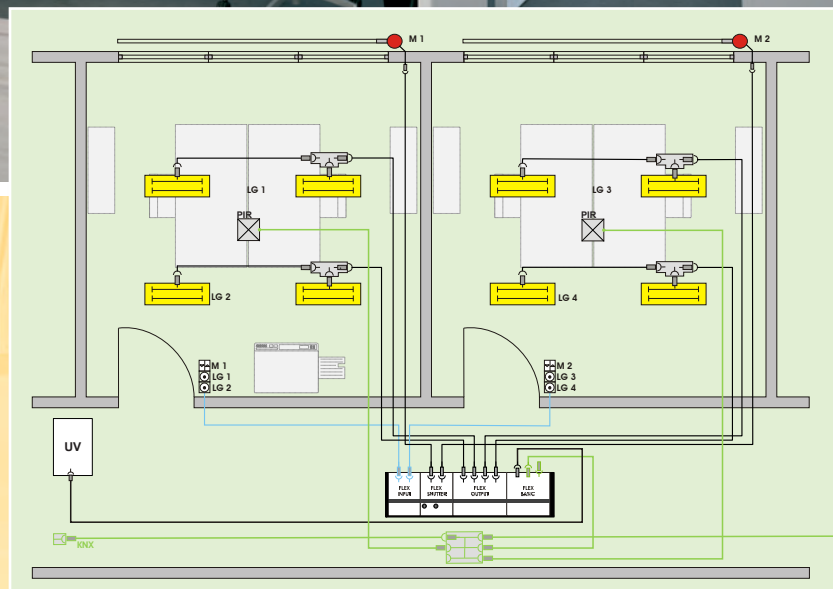
Advantages

- Clear and neatly arranged room functions
- Fast, easy, error-free planning and installation
- Very flat design for mounting in low installation spaces
- Simple adjustments for change of use
- Flexibility secures long-term value of the property



Offices:

- Need-oriented lighting control
- Sunblind control with local fuse
- Integration of conventional buttons





Education/Conference Centers

Application

Compact, modular, and pluggable electrical installation and room automation for

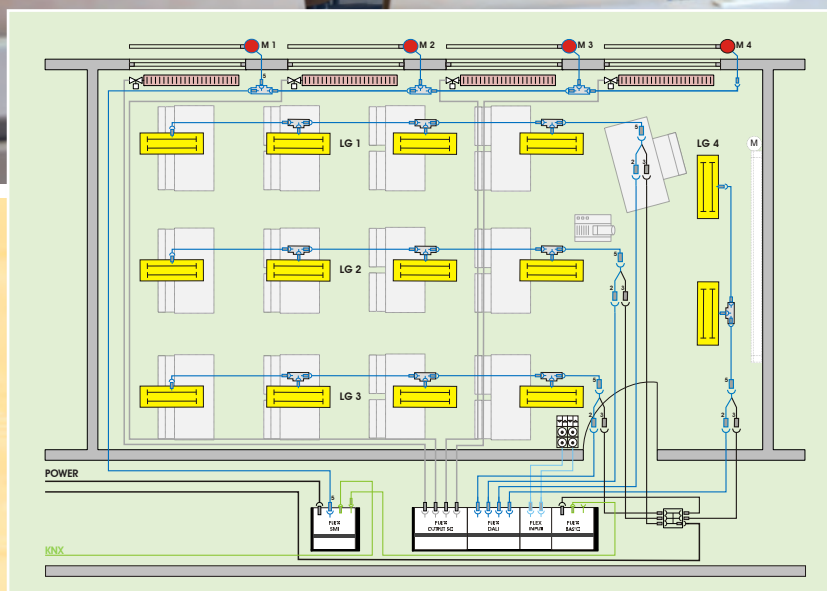
- Classrooms
- Staff rooms and administrative offices
- Sports halls and gyms
- Break rooms and common rooms

Solutions

- Decentralized, modular room automation with **gesis® FLEX**
- Presence monitoring for lighting control and energy optimization
- Room temperature control
- Sunshade control

Advantages

- Fast, easy, error-free planning and installation
- Sustainable reduction in energy consumption
- Decentralized room automation, ideal for renovation
- Simple configuration
- High functionality for building automation



Classrooms:

- DALI lighting control
- **NEW SMI Sunshade control**
- Semiconductor output for heating valve control
- Integration of conventional buttons



Medical/Care Sector

Application

Compact, modular, and pluggable electrical installation and room automation for

- Patient rooms
- Administrative offices
- Examination rooms / outpatient department
- Catering area / kitchen
- Break rooms

Solutions

- Decentralized, modular room automation with **gesis® FLEX**
- Color-coded and mechanically coded connector systems
- Pre-assembled, waste-free electrical installation
- Occupancy-dependent room temperature control
- Sunshade control

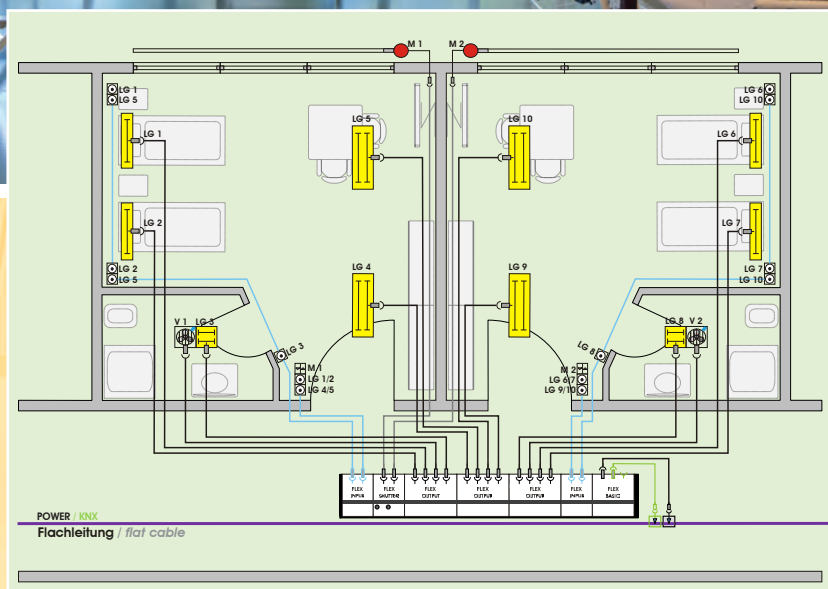
Advantages

- Safe, clean, and clear installation
- High availability of room automation
- Standardized room installation (patient rooms)
- Easy renovation due to decentralized room automation
- Automation functions can be easily implemented



Patient rooms

- Light control
- Ventilation control (for wet areas)
- Shading control with local fuse
- Integration of conventional buttons





Hotels

Application

Compact, modular, and pluggable electrical installation and room automation for

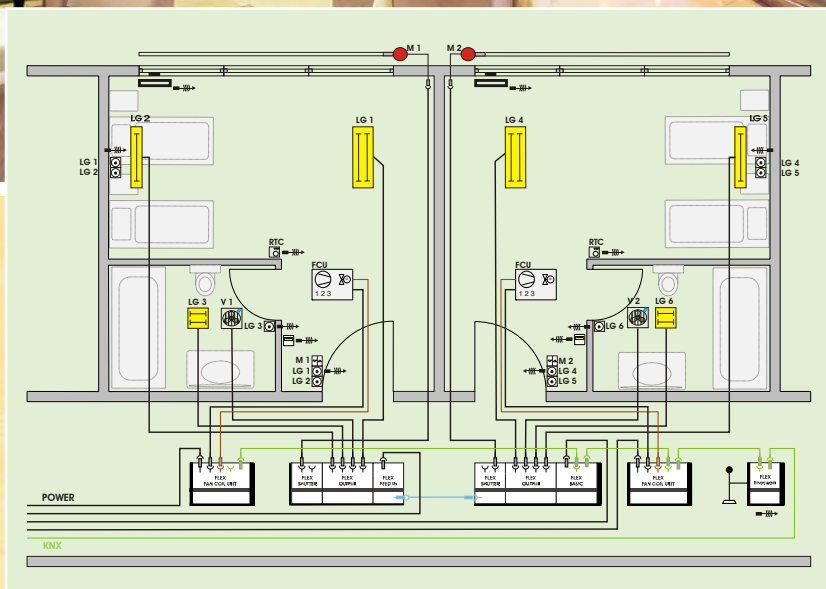
- Hotel rooms
- Operational areas (kitchen, restaurant)
- Administrative areas
- Conference rooms
- Event areas
- Foyers

Solutions

- Decentralized, modular room automation with **gesis® FLEX**
- Pre-assembled, waste-free electrical installation
- Convenient lighting control
- Need-oriented room temperature control
- Battery-free radio technology with EnOcean

Advantages for this application

- Convenient room automation provides for a pleasant atmosphere
- Efficient installation thanks to standardized spaces
- Simple implementation of trends due to room-based solution
- Clean, room-by-room renovation without business interruption
- Reliable window position monitoring using radio technology



Hotels:

- Light control
- Ventilation control (for wet areas)
- Shading control with local fuse
- **NEW Fan coil control**
- Integration of all buttons, sensors, and controllers via EnOcean gateway



gesis® FLEX Product Portfolio

Modular – Compact – Pluggable

Available variations:

- Without plug set, order numbers end with .0
- With plug set, order numbers end with .1

gesis® FLEX Modular

One base module manages up to six extension modules, they can be combined freely.



KNX base module and feed in
230/400 VAC, 16 A

1-phase	
gesis KNX FLEX-BAS SP	83.020.0601.0
gesis KNX FLEX-BAS SP Z	83.020.0601.1
3-phase	
gesis KNX FLEX-BAS	83.020.0600.0
gesis KNX FLEX-BAS Z	83.020.0600.1



Intermediate feed
230/400 VAC, 16 A

1-phase	
gesis FLEX-MS SP	83.020.0611.0
gesis FLEX-MS SP Z	83.020.0611.1
3-phase	
gesis FLEX-MS	83.020.0610.0
gesis FLEX-MS Z	83.020.0610.1



Binary input extension module
8-fold, 12 VDC

gesis FLEX-8/0	83.020.0622.0
gesis FLEX-8/0 Z	83.020.0622.1



Switching output extension module,
230 V AC, 16 A

4-fold, Standard	
gesis FLEX-0/4	83.020.0623.0
gesis FLEX-0/4 Z	83.020.0623.1
4-fold, C-load, 140 µF	
gesis FLEX-0/4P	83.020.0626.0
gesis FLEX-0/4P Z	83.020.0626.1
3-fold, emergency lighting function	
gesis FLEX-0/3 EL	83.020.0636.0
gesis FLEX-0/3 EL Z	83.020.0636.1



DALI output extension module
4x16-fold

gesis FLEX-0/4DA	83.020.0630.0
gesis FLEX-0/4DA Z	83.020.0630.1



Y-conductor for DALI application
PVC cable

0.5 m	99.404.9999.8
halogen-free cable	
0.5 m	99.405.9999.8



Shutter output extension module
2-fold, 230 VAC, 8 A

gesis FLEX-0/2W	83.020.0624.0
gesis FLEX-0/2W Z	83.020.0624.1
each output with 3.15 AT fuse	
gesis FLEX-0/2W F	83.020.0634.0
gesis FLEX-0/2W F Z	83.020.0634.1



Shutter output extension module
2-fold, 24 VDC, 3 A

gesis FLEX-0/2W DC	83.020.0627.0
gesis FLEX-0/2W DC Z	83.020.0627.1
input with 6.3 AT fuse	
gesis FLEX-0/2W DC F	83.020.0637.0
gesis FLEX-0/2W DC F Z	83.020.0637.1



Semiconductor outputs extension
module 4-fold, 230 VAC, 0.5 A

gesis FLEX-0/4HL AC	83.020.0631.0
gesis FLEX-0/4HL AC Z	83.020.0631.1
each output with 0.5 AT fuse	
gesis FLEX-0/4HL AC F	83.020.0632.0
gesis FLEX-0/4HL AC F Z	83.020.0632.1



Semiconductor outputs extension
module 4-fold, 24 VDC, 0.5 A,
with electronic short-circuit and
overload detection

gesis FLEX-0/4HL DC	83.020.0633.0
gesis FLEX-0/4HL DC Z	83.020.0633.1



Information about these products:

0700.1 **gesis®** ELECTRONIC catalog

For further technical details, please use our e-catalog online at:

<https://eshop.wieland-electric.com>

gesis® FLEX Stand-alone modules



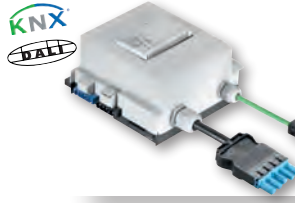
EnOcean Gateway
 gesis KNX FLEX-ENO32 83.020.0628.0
 gesis KNX FLEX-ENO32 Z 83.020.0628.1



Fan coil actuators
Fan coil base module
 gesis KNX FLEX-FC 83.020.0638.0
 gesis KNX FLEX-FC Z 83.020.0638.1
Fan coil extension module
 gesis FLEX-FC EM 83.020.0639.0
 gesis FLEX-FC EM Z 83.020.0639.1



SMI gateway for shutter control
 gesis KNX FLEX-SMI8 83.020.0635.0
 gesis KNX FLEX-SMI8 Z 83.020.0635.1



KNX actuators in a gesis FLEX DIN rail system housing
 DALI gateway G0.000.0666.8
 Switch-/dimming actuator 2-fold G0.000.0666.7
 Analog input 4-fold G0.000.0667.0



Further functions in a gesis FLEX DIN rail system housing
Power supply units
 Power pack 24 VDC, 2.5 A G0.000.0667.2
Cable protection
 RCD/MCB G0.000.0667.3
 1P+N 6 kA B 16 A 30 mA

gesis® FLEX Add-on

System-compatible empty housings for rail-mounted devices and feed modules



Empty DIN rail system housing for 4 module width without cable glands
 gesis FLEX-REG4 83.020.0660.0
with cable glands for cable diameter
 1 x 5-9 mm; 2 x 7-13 mm
 gesis FLEX-REG4 V 83.020.0661.0



Empty DIN rail system housing for 4 module width with hinged lid without cable glands
 gesis FLEX-REG4 D 83.020.0662.0
with cable glands for cable diameter
 1 x 5-9 mm; 2 x 7-13 mm
 gesis FLEX-REG4 DV 83.020.0663.0

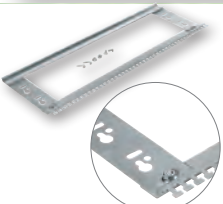
gesis® FLEX Accessories



Power pack 24 V DC / 30 W
 gesis FLEX-PS 24/30 83.020.0640.0
 gesis FLEX-PS 24/30 Z 83.020.0640.1



System extensions
Main:
 Main extension: 0.5 m 91.257.0500.2
 Main extension: 1.0 m 91.257.1000.2
Internal Bus:
 Bus extension: 0.5 m 99.400.9999.8
 Bus extension: 1.0 m 99.401.9999.8



Quick mounting frame
 40 cm Z5.524.1410.0
 50 cm Z5.524.1510.0
 60 cm Z5.524.1610.0
 70 cm Z5.524.1710.0
 80 cm Z5.524.1810.0
 90 cm Z5.524.1910.0
 100 cm Z5.524.2010.0



Side covers as a set 99.061.9999.9





USA
Wieland Electric Inc.
North American Headquarters
2889 Brighton Road
Oakville, Ontario L6H 6C9
Phone +1 905 8298414
Fax +1 905 829 413
www.wielandinc.com



CANADA
Wieland Electric Inc.
North American Headquarters
2889 Brighton Road
Oakville, Ontario L6H 6C9
Phone +1 905 8298414
Fax +1 905 829 413
www.wieland-electric.ca



GREAT BRITAIN
Wieland Electric Ltd.
Riverside Business Center,
Walnut Tree Close
GB Guildford/Surrey GU1 4UG
Phone +44 1483 531213
Fax +44 1483 505029
sales.uk@wieland-electric.com
www.wieland-electric.co.uk



FRANCE
Wieland Electric SARL.
Le Cérame, Hall 6
47, avenue des Genottes
CS 48313,
95803 Cergy-Pontoise Cedex
Phone +33 1 30320707
Fax +33 1 30320717
info.france@wieland-electric.com
www.wieland-electric.fr



SPAIN
Wieland Electric S.L.
C/ Maria Auxiliadora 2, bajos
E-08017 Barcelona
Phone +34 93 2523820
Fax +34 93 2523825
ventas@wieland-electric.com
www.wieland-electric.es



ITALY
Wieland Electric S.r.l.
Via Edison, 209
I-20019 Settimo Milanese
Phone +39 02 48 916357
Fax +39 02 48 920685
info.italy@wieland-electric.com
www.wieland-electric.it



BELGIUM & GD LUXEMBOURG
ATEM-Wieland Electric NV
Bedrijvenpark De Veert 4
B-2830 Willebroek
Phone +32 3 8661800
Fax +32 3 8661828
info.belgium@wieland-electric.com
www.wieland-electric.be



DENMARK
Wieland Electric A/S
Vallørækken 26
DK-4600 Køge
Phone +45 70 266635
Fax +45 70 266637
sales.denmark@wieland-electric.com
www.wieland-electric.dk



SWITZERLAND
Wieland Electric AG
Harzachstrasse 2b
CH-8404 Winterthur
Phone +41 52 2352100
Fax +41 52 2352119
info.swiss@wieland-electric.com
www.wieland-electric.ch



POLAND
Wieland Electric Sp. z o.o.
Św. Antoniego 8
62-080 Swadzim
Phone +48 61 2225400
Fax +48 61 8407166
office@wieland-electric.pl
www.wieland-electric.pl



CHINA
Wieland Electric Trading
Unit 2703 International Soho City
889 Renmin Road,
Huang Pu District
PRC-Shanghai 200010
Phone +86 21 63555833
Fax +86 21 63550090
info-shanghai@wieland-electric.com
www.wieland-electric.cn



JAPAN
Wieland Electric Co, Ltd.
Nisso No. 16 Bldg. 7F
3-8-8 Shin-Yokohama,
Kohoku-ku
Yokohama 222-0033
Phone +81 45 473 5085
Fax +81 45 470 5408
info-japan@wieland-electric.com



GERMANY
Headquarters
Wieland Electric GmbH
Brennerstraße 10 – 14
96052 Bamberg, Germany
Phone +49 951 9324-0
Fax +49 951 9324-198
info@wieland-electric.com
www.wieland-electric.de

Sales Partner:

**You can reach us worldwide in more than 70 countries.
Find the contact address at: www.wieland-electric.com**

Subject to technical modifications!
gesis[®], RST[®], GST[®], GST18[®], podis[®], samos[®] and saris[®]
are registered trademarks of Wieland Electric GmbH

**contacts
are
green.**