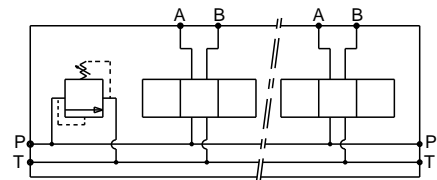
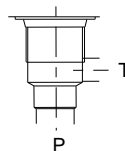


Stations	X	Y	(kg)
1	80	56	5.70
2	160	136	11.30
3	240	216	16.90
4	320	296	22.60
5	400	376	28.40
6	480	456	34.10
7	560	536	39.80
8	640	616	45.50

Cavity C10-2



Technical specifications

Material	: Cast iron EN-GJL-250 _ Phosphatation
Pressure	: 300 bar max
Flow rate	: 120 L/mn max

Designation code :

MR - 5 - * . G / C10-2

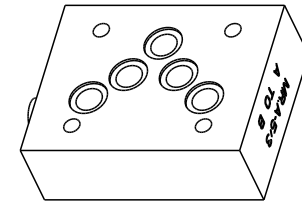
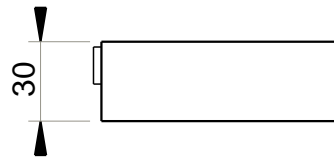
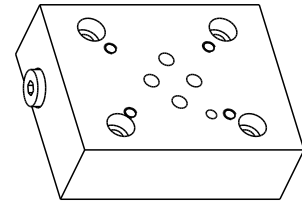
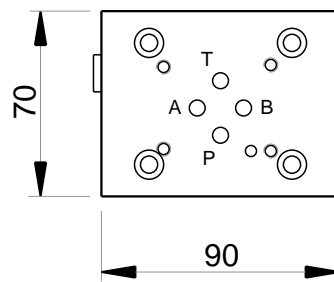
MECABOR

CETOP 5
side entry

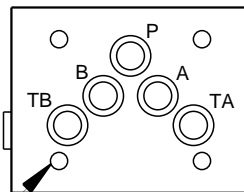
Station number

Cavity

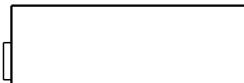
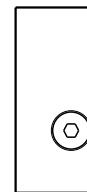
G : ports BSP



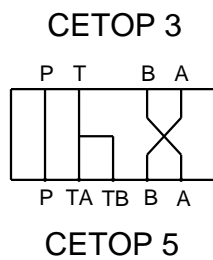
MR.A-5/3
A TO B



4 x Ø6.5



MR.A-5/3



Technical specifications

Material	: Steel 1.0736 _ Phosphatation
Pressure	: 300 bar maxi
Weight	: 1.40 kg
Supplied with seals and screws	

Designation code :

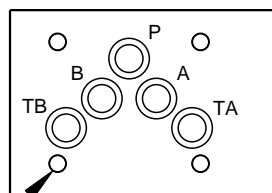
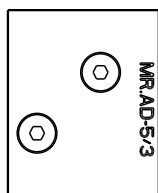
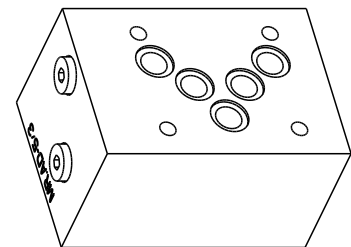
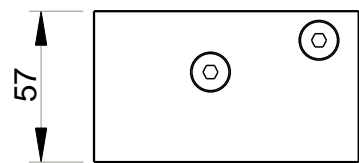
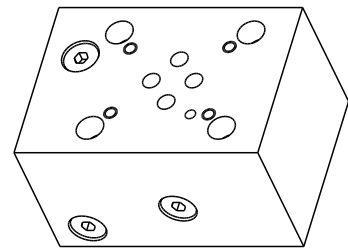
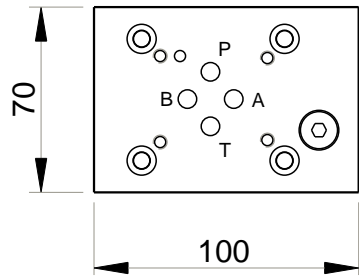
MR . A - 5 / 3

MECABOR

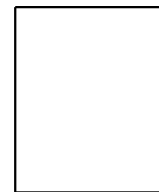
Adaptator plate

CETOP 5

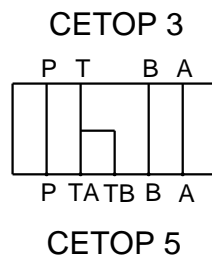
CETOP 3



4 x Ø6.5



MR.AD-5/3



Technical specifications

Material : Steel 1.0736 _ Phosphatation
 Pressure : 300 bar maxi
 Weight : 2.90 kg
 Supplied with seals and screws

Designation code :

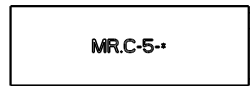
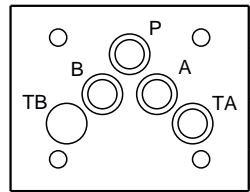
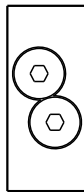
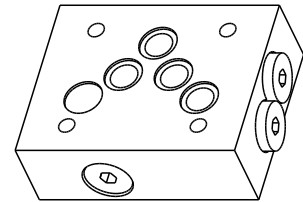
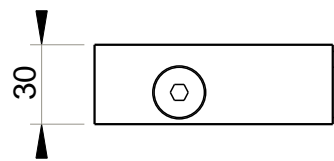
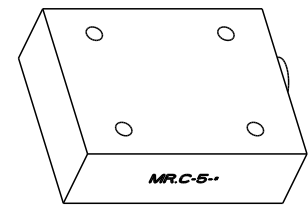
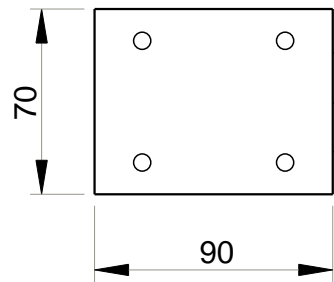
MR . AD - 5 / 3

MECABOR

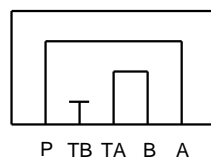
Direct adaptator plate

CETOP 5

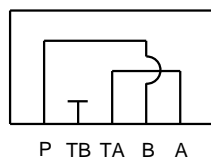
CETOP 3



MR.C-5.PA



MR.C-5.PB



Technical specifications

Material	: Steel 1.0736 _ Phosphatation
Pressure	: 300 bar maxi
Weight	: 1.35 kg
supplied with seals	

Designation code :

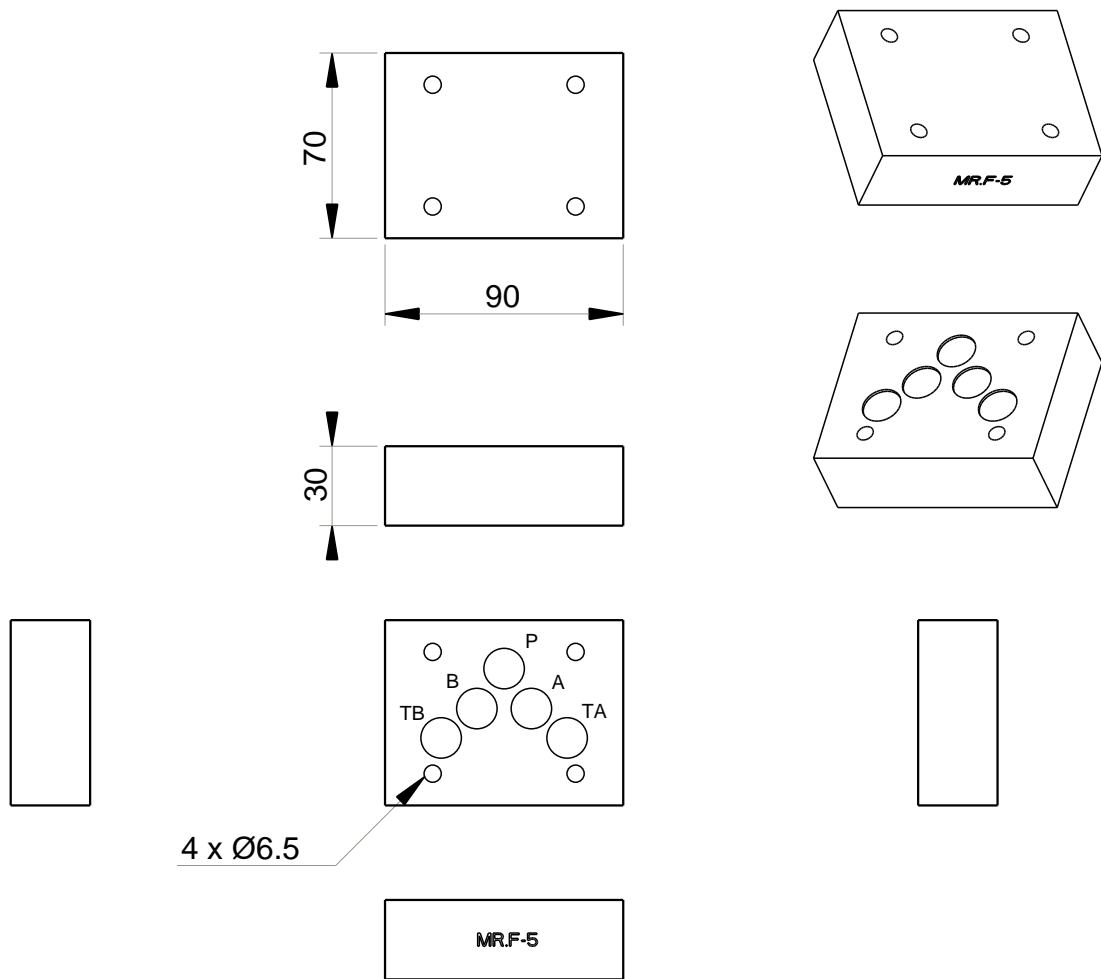
MR . C - 5 . *

MECABOR

Crossover plate

CETOP 5

PA = P - A
 T - B
 PB = P - B
 T - A



MR.F-5


Technical specifications

Material	: Steel 1.0736 _ Phosphatation
Pressure	: 300 bar maxi
Weight	: 1.50 kg
Supplied with seals and screws	

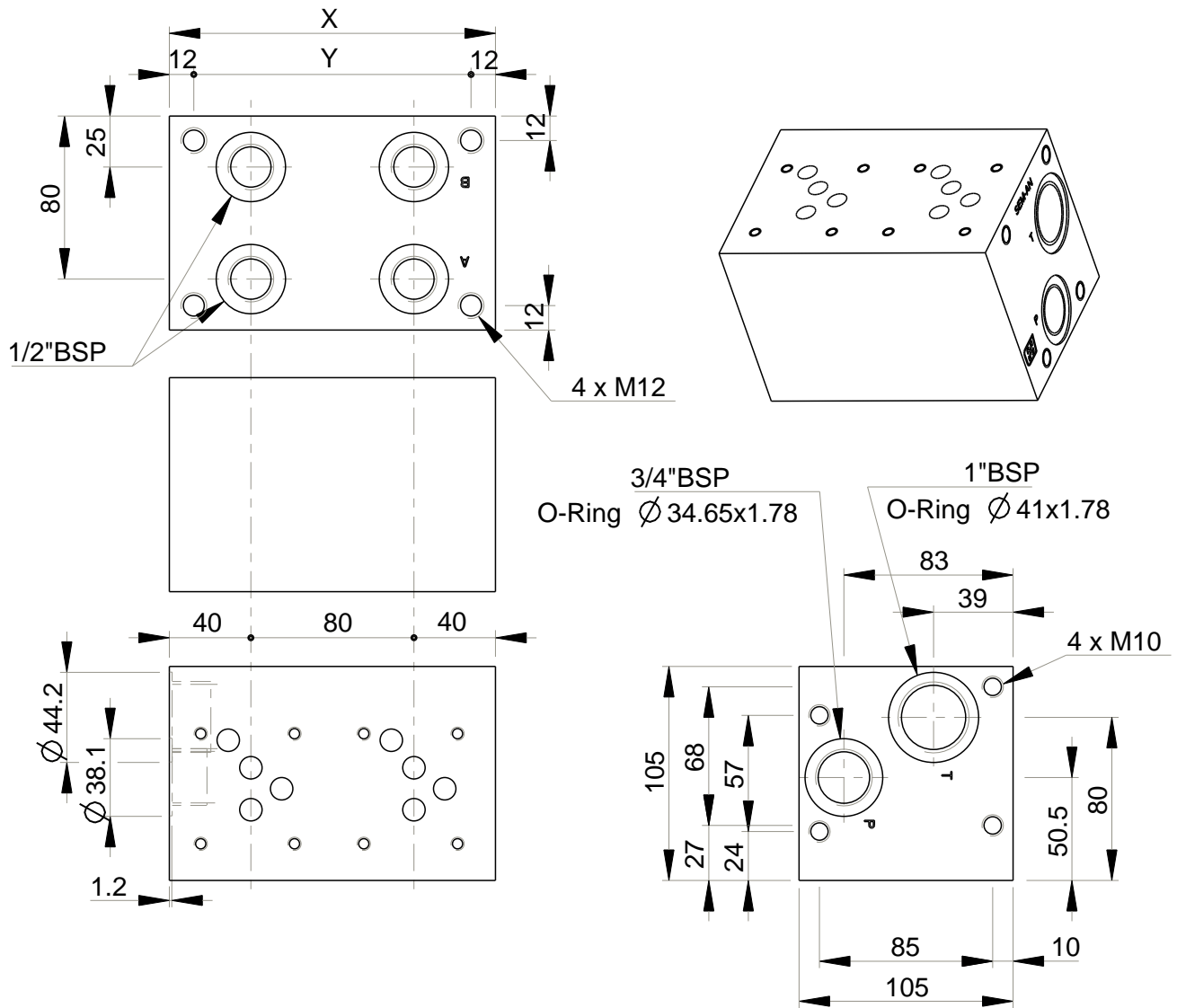
Designation code :

MR . F - 5

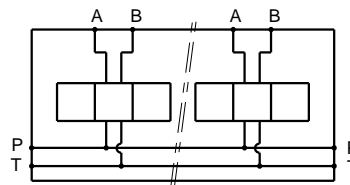
MECABOR

Blanking plate

CETOP 5



Stations	X	Y	(kg)
1	80	56	5.80
2	160	136	11.30
3	240	216	17.00
4	320	296	22.70
5	400	376	28.50
6	480	456	34.20
7	560	536	39.90
8	640	616	45.60



Technical specifications

Material	: Cast iron EN-GJL-250 _ Phosphatation
Pressure	: 300 bar max
Flow rate	: 120 L/mn max

Designation code :

MR . K - 5 - * . G

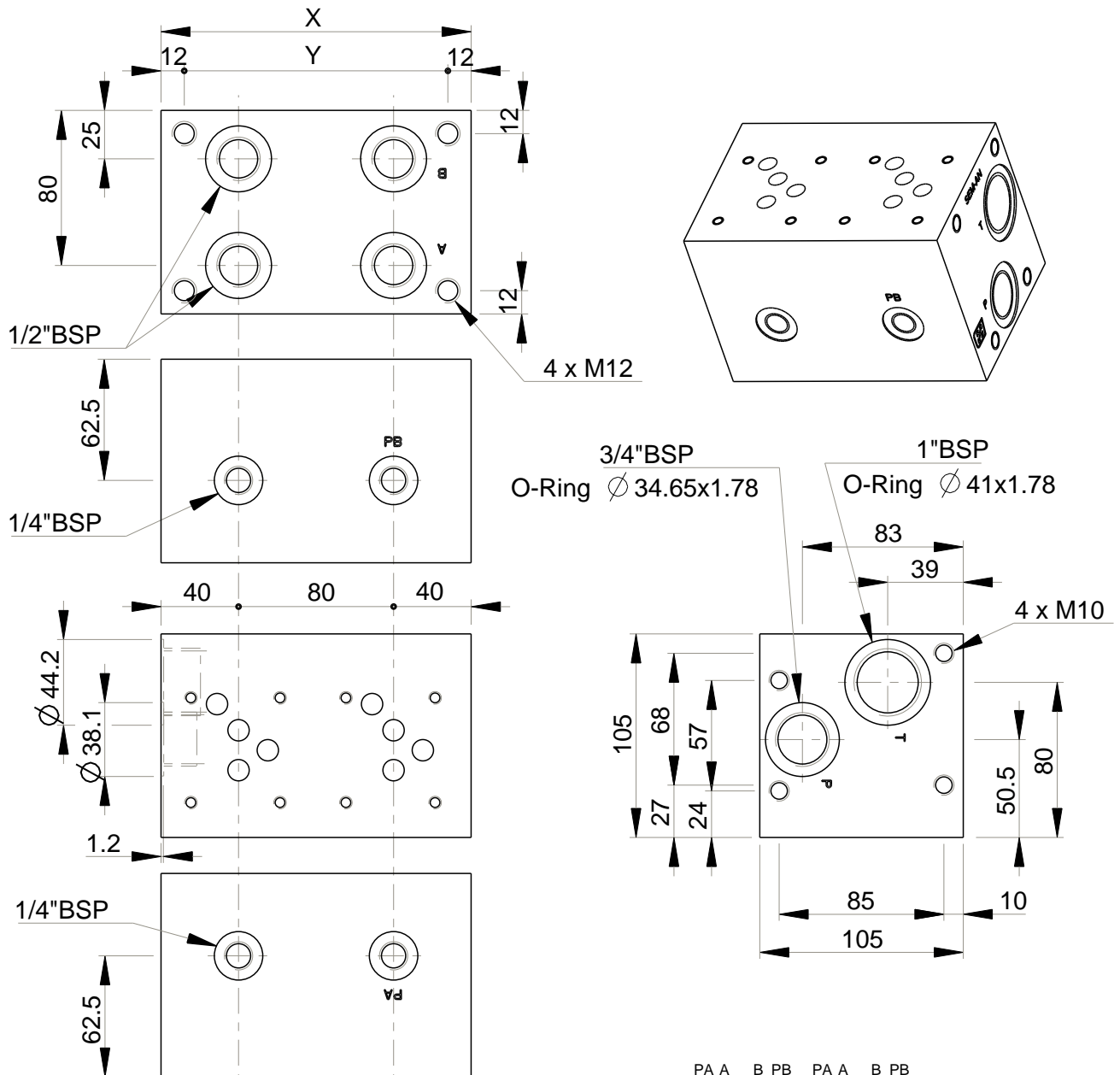
MECABOR

Bottom side

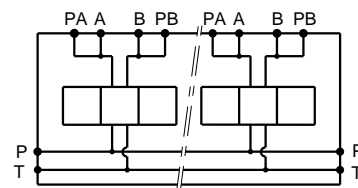
CETOP 5

G : ports BSP

Station number



Stations	X	Y	(kg)
1	80	56	5.80
2	160	136	11.30
3	240	216	17.00
4	320	296	22.70
5	400	376	28.50



Technical specifications

Material	: Cast iron EN-GJL-250 _ Phosphatation
Pressure	: 300 bar max
Flow rate	: 120 L/mn max

Designation code :

MR . K - 5 - * . G . P . AB

MECABOR

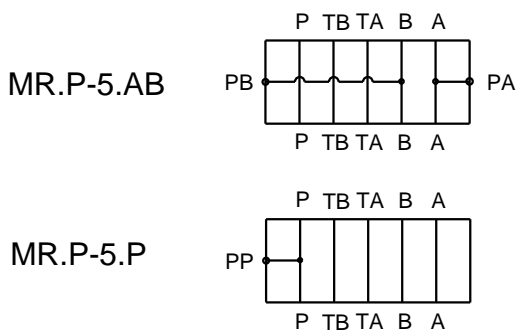
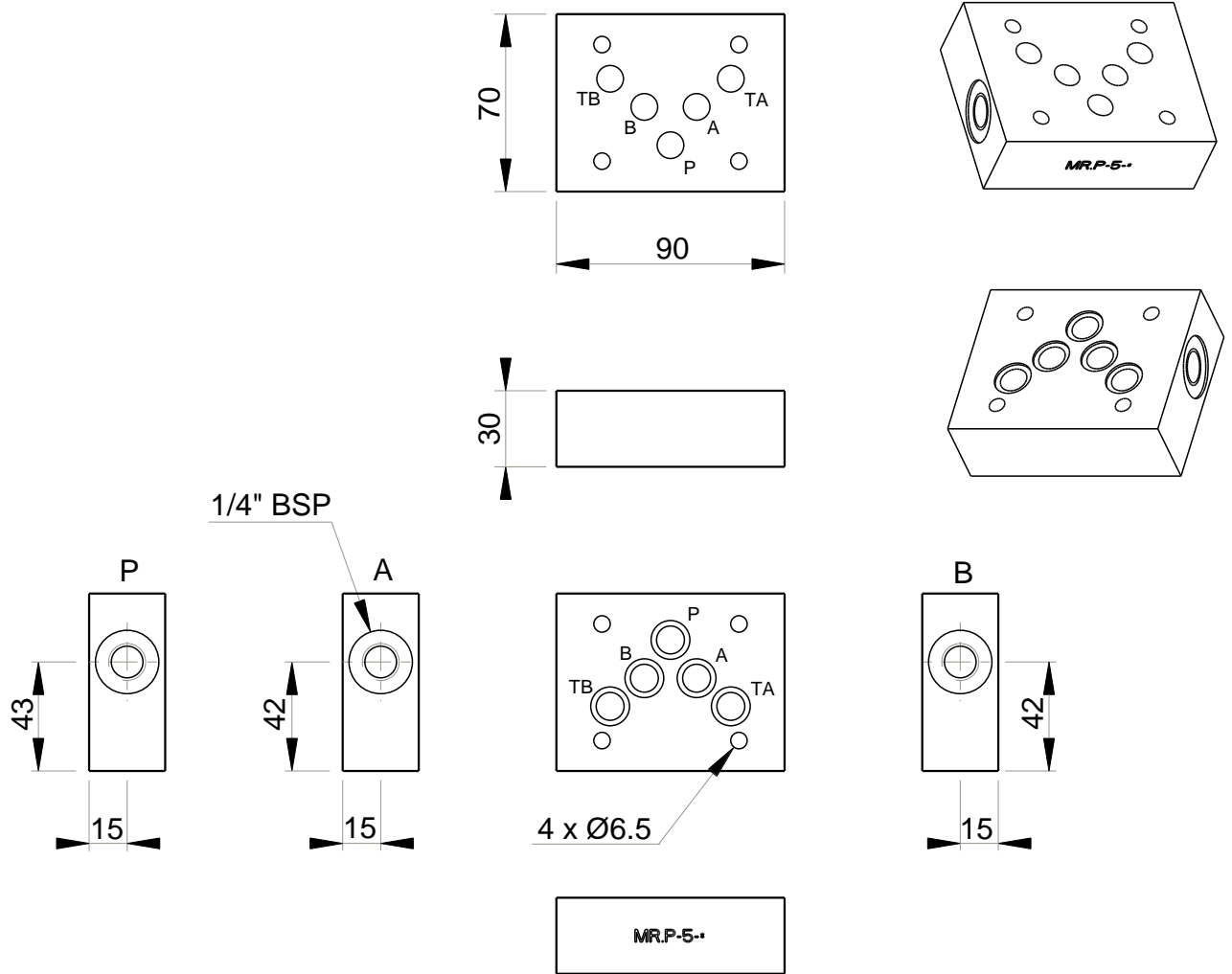
Bottom entry

CETOP 5

Station number

Pressure test points
on A and B

G : ports BSP



Technical specifications	
Material	: Steel 1.0736 _ Phosphatation
Pressure	: 300 bar maxi
Weight	: 1.30 kg
Supplied with seals	

Designation code : **MR . P - 5 - * - 1/4" G**

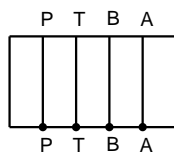
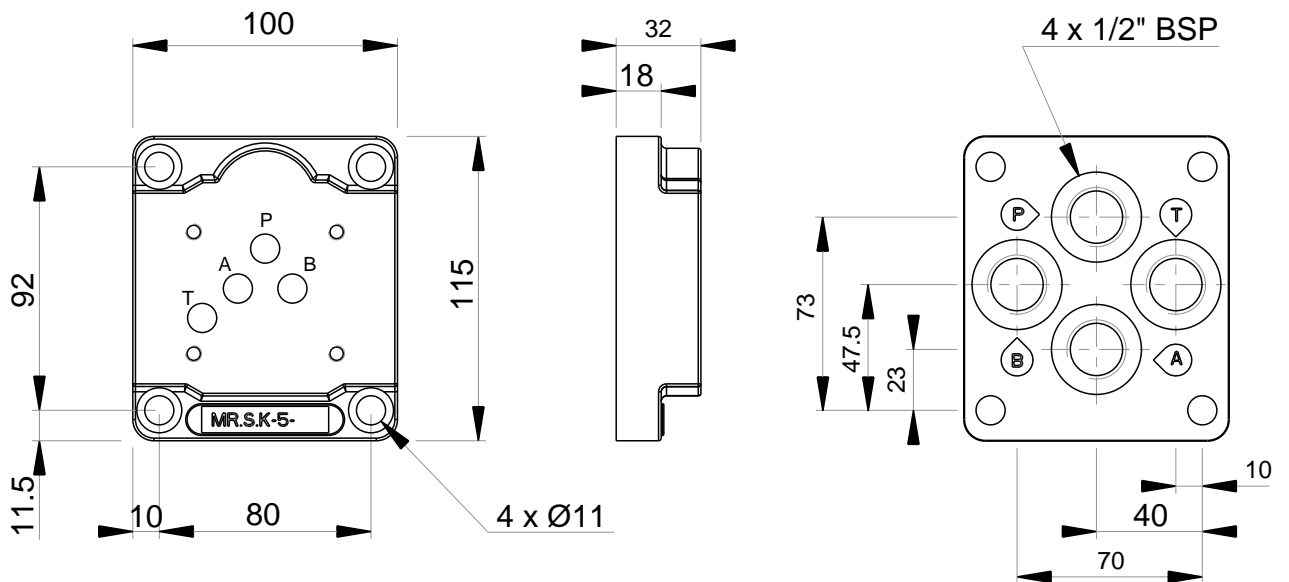
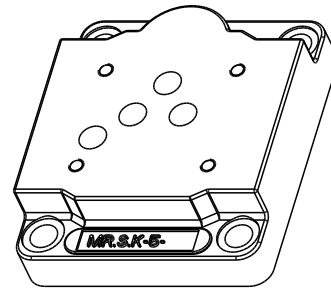
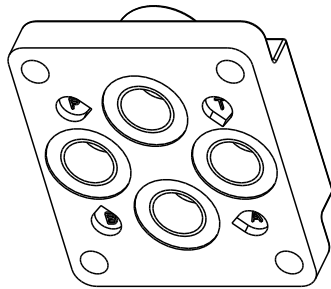
MECABOR

Subplate with
pressure test points

CETOP 5

G : ports BSP

P = pressure test point on P
AB = pressure test points
on A and B



Technical specifications

Material	: Cast iron EN-GJS-400-15 _ Phosphatation
Pressure	: 300 bar maxi
Flow rate	: 100 L/mn maxi
Weight	: 1.9 kg

Designation code :

MR . S . K - 5 - 1/2" G

MECABOR

Subplate

Bottom entry

G : ports BSP

CETOP 5