

# GRF 015

## Mobile filtration unit



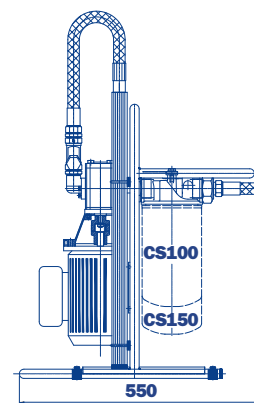
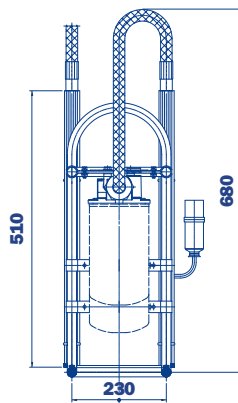
The GRF 015 is a portable oil transfer/filtration unit, specifically designed for both filling/transferring hydraulic oils from containers to the hydraulic tank as well as filtering and cleaning hydraulic systems.

The unit utilises Spin-On standard filters elements, available in two lengths, thus increasing the dirt holding capacity and lowering pressure drop of the unit.

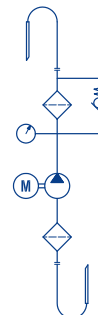
The unit has the flexibility in being able to offer a wide range of medias and micro ratings to suit any application.

The unit is very compact and lightweight.

- **Handle size**
- **Light**
- **Easy to use**
- **Easy maintenance**
- **Reliable**
- **Absolute filtration**



### Symbol



## Technical data

<b>Pump</b>	Gear pump
<b>Electric Motor</b>	0,18 Kw 230 Volt single phase electric motor
<b>Flow (l/min)</b>	15 l/min
<b>Max. Operation Pressure</b>	5 bar
<b>Viscosity range</b>	Min. operation 10 cSt Max. operation 200 cSt Max. only for cold start 400 cSt
<b>Suction Filter</b>	Type Y filtration 300 µm
<b>Filtration Rating</b>	1/3/6/10/25 µm β>1000 flow through the element In/Out
<b>By-Pass valve</b>	Rating 2,5 bar
<b>Fluid Temperature</b>	From -10° to +80 °C
<b>Ambient Temperature</b>	From -20° to +45 °C
<b>Protection Class</b>	IP 55
<b>Seal</b>	NBR
<b>Fluid Compatibility</b>	Mineral Oil - Other on request
<b>Suction hose</b>	3/4" length 2500 mm - DN18 length 400 mm
<b>Pressure hose</b>	3/4" length 2500 mm - DN18 length 400 mm
<b>Weight</b>	14,8 kg.
<b>Equipment</b>	Visual clogging indicator (gauge)

## Spare parts

### Filter element - Standard length

Inorganic microfibre element

CS 100 A01 A P01	1 µm absolute
CS 100 A03 A P01	3 µm absolute
CS 100 A06 A P01	6 µm absolute
CS 100 A10 A P01	10 µm absolute
CS 100 A25 A P01	25 µm absolute

Wire mesh element

CS 100 M25 A P01	25 µm
CS 100 M60 A P01	60 µm

### Filter element - Extended length

Inorganic microfibre element

CS 150 A01 A P01	1 µm absolute
CS 150 A03 A P01	3 µm absolute
CS 150 A06 A P01	6 µm absolute
CS 150 A10 A P01	10 µm absolute
CS 150 A25 A P01	25 µm absolute

Wire mesh element

CS 150 M25 A P01	25 µm
CS 150 M60 A P01	60 µm

## Ordering information

### GRF 015 1 A M M 1 M 1

- **Mobile filtration unit without filter element**
- **Filtration elements should be ordered separately**