

# UFM 050

## Mobile filtration unit



Available in three configurations

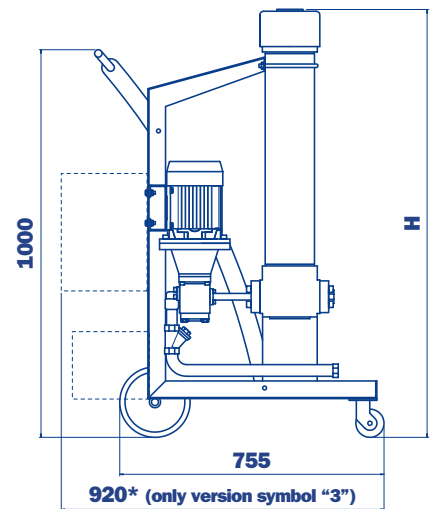
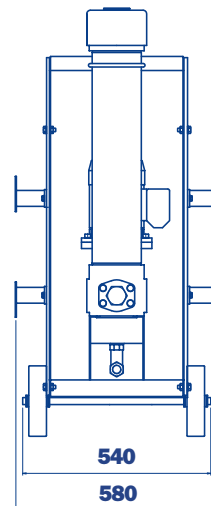
- A configuration with start / stop differential pressure indicator - visual
- B configuration with start / stop automatic motor cut-out from differential pressure indicator - electrical/visual
- C configuration with start / stop phase inverter automatic motor cut-out from differential pressure indicator - electrical/visual  
In Line Particle Counter ICM

UFM 050 mobile filtration units suitable for filling and refilling of filtered hydraulic fluids and lubrication tanks.

The filter unit connected to off-line to the tank (recommended maximum volume of 500/750 L.), can be used as a support to the filtration plant on start-up for fast flushing action, either as additional filtration systems with a high incidence of contamination.

Continued use is recommended for the version with three phase electric motor.

## Dimensions



### UFM 050

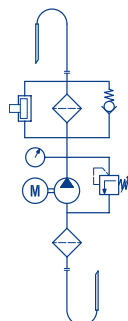
Length filter body  
(see ordering information)

Length Filter	H mm
5	1230 Standard
6	1530 Special

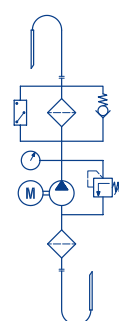
- **Compact size**
- **Continue Operation Pressure 10 bar**
- **Easy to use**
- **Easy maintenance**
- **Reliable**
- **Absolute filtration**
- **In Line Contamination Monitor**

## Symbols (see ordering information)

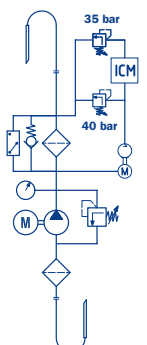
"0"  
Symbol



"1"  
Symbol



"3"  
Symbol



<b>Pump</b>	Gear pump
<b>Electric Motor</b>	1,5 Kw 230 Volt single phase electric motor 1,5 Kw 400/230 Volt three phase electric motor
<b>Flow (l/min)</b>	50 l/min
<b>Max. Operation Pressure</b>	10 bar
<b>Viscosity range</b>	Min. operation 10 cSt Max. operation 300 cSt Max. only for cold start 800 cSt
<b>Suction Filter</b>	Type Y filtration 400 µm
<b>Filtration Rating</b>	1/3/6/10/16/25 µm β>1000 flow through the element Out/In
<b>By-Pass valve</b>	Rating 3,5 bar (no by-pass valve in request)
<b>Fluid Temperature</b>	From -10° to +80° C
<b>Ambient Temperature</b>	From -20° to +45° C
<b>Protection Class</b>	IP 55
<b>Seal</b>	NBR
<b>Fluid Compatibility</b>	Mineral Oil - Other on request
<b>Suction hose - with lance</b>	1 1/4" length 3000 mm - DN35 length 700 mm
<b>Pressure hose - with lance</b>	1" length 3000 mm - DN30 length 700 mm
<b>Weight</b>	70 kg.
<b>Equipment</b>	<ul style="list-style-type: none"> <li>Differential Clogging indicator - Visual</li> <li>Differential Clogging indicator - Electrical/Visual</li> <li>In line Particle Counter ICM + Differential Clogging indicator - Electrical/Visual</li> </ul>

## Filter element length 5 Standard

Inorganic microfibre element

CU 400 5 A01 A N P01	1 µm absolute
CU 400 5 A03 A N P01	3 µm absolute
CU 400 5 A06 A N P01	6 µm absolute
CU 400 5 A10 A N P01	10 µm absolute
CU 400 5 A16 A N P01	16 µm absolute
CU 400 5 A25 A N P01	25 µm absolute

Wire mesh element

CU 400 5 M25 A N P01	25 µm
CU 400 5 M60 A N P01	60 µm

## Filter element length 6 Special

Inorganic microfibre element

CU 400 6 A01 A N P01	1 µm absolute
CU 400 6 A03 A N P01	3 µm absolute
CU 400 6 A06 A N P01	6 µm absolute
CU 400 6 A10 A N P01	10 µm absolute
CU 400 6 A16 A N P01	16 µm absolute
CU 400 6 A25 A N P01	25 µm absolute

Wire mesh element

CU 400 6 M25 A N P01	25 µm
CU 400 6 M60 A N P01	60 µm

# Ordering information

## UFM

Example: UFM

<b>1</b>	<b>2</b>	<b>3</b>	<b>4</b>	<b>5</b>	<b>6</b>	<b>7</b>
<input type="text" value="050"/>	<input type="text" value="T"/>	<input type="text" value="A"/>	<input type="text" value="2"/>	<input type="text" value="E"/>	<input type="text" value="5"/>	<input type="text" value="P01"/>
<b>050</b>	<b>T</b>	<b>A</b>	<b>2</b>	<b>E</b>	<b>5</b>	<b>P01</b>

### 1 - Flow

50 l/min

### 2 - Electric motor

Single phase 220 V  
 Three phase 380 V

### 3 - Seals

NBR

### 4 - Automatic motor cut-out from differential pressure indicator

Without  
 With  
 Automatic motor cut-out from differential pressure indicator  
Phase inverter  
ICM Contamination Monitor  
Only with electric motor three phase

### 5 - Filter elements

Without element  
 1 µm absolute  
 3 µm absolute  
 6 µm absolute  
 10 µm absolute  
 16 µm absolute  
 25 µm absolute  
 25 µm wire mesh  
 60 µm wire mesh

### 6 - Length filter body

Standard  
 Special

### 7 - Option

Standard MP Filtri