

# Accessories

## Mounting accessories

### Mounting kit 028



#### Features

- For low-dynamic applications and constant movements

#### Description

Torque support onto encoder by help of the attached screws. Push encoder onto the drive shaft and mount torque support onto the client side.

#### Part number

11067367 Torque arm, 1-arm, bolt circle  $\varnothing 74 \dots 94$  mm, mounting M6 (mounting kit 028)

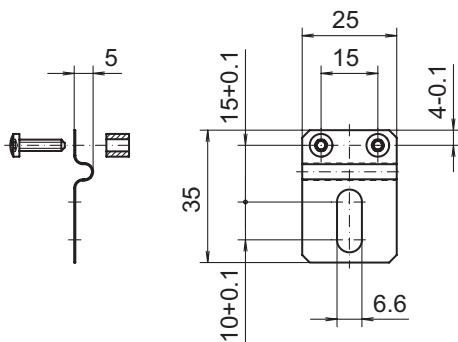
#### Scope of delivery

Included:  
torque support, two screws M3 x 12 (DIN 7985 - TX10) with two spacers 6 mm

#### Suitable for

EIL580 - blind hollow shaft, EIL580 - through hollow shaft,  
EIL580P - blind hollow shaft, EIL580P - through hollow shaft

#### Dimensions



Z00415

#### Assembly drawing

