

Accessories

Mounting accessories

Mounting kit 056



Features

- For low-dynamic applications and constant movements

Description

Torque support onto encoder by help of the attached screws. Push encoder onto the drive shaft and mount torque support onto the client side. Fastening clamping ring by the screw provided.

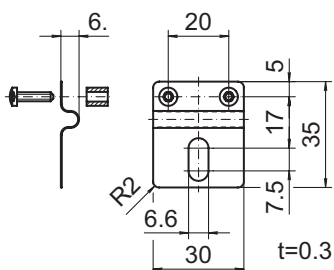
Part number

11066120 Mounting kit 056

Scope of delivery

Included:
torque support, two screws M3 x 12 (DIN 7985 - TX10) with two spacers 7 mm

Dimensions



Z00427

Assembly drawing

