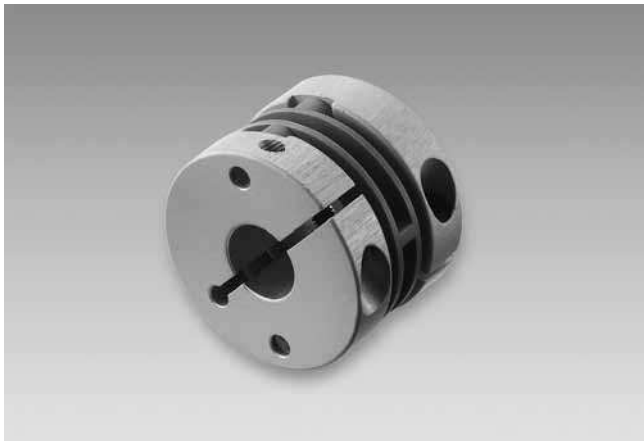


Accessories

Mounting accessories

Spring washer



Part number

10141131	Spring washer coupling D1=06 / D2=06
10141132	Spring washer coupling D1=06 / D2=10
10141133	Spring washer coupling D1=10 / D2=10
11034138	Spring washer coupling D1=10 / D2=16
11034139	Spring washer coupling D1=06 / D2=16
11034140	Spring washer coupling D1=10 / D2=14
11034141	Spring washer coupling D1=10 / D2=12

Suitable for

EIL580 - clamping flange, EIL580 - synchro flange,
EIL580P - clamping flange, EIL580P - synchro flange

Technical data

Operating speed	≤12000 rpm
Torque	≤0.6 Ncm
Moment of inertia	29.5 gcm ²
Torsion spring stiffness	50 Nm/rad
Radial offset	±0.3 mm
Angular shift	±2.5°
Axial offset	±0.4 mm
Operating temperature	-10...+100 °C
Assembly	Plug-in
Materials	Clamping ring: aluminium Spring washer: plastic
Weight approx.	26 g

Dimensions

