

Accessories

Mounting accessories

Insulating sleeve EIL580 - hollow shaft



Description

Insulation sleeves reliably protect the encoder against damage by shaft currents.
For drive shafts $\varnothing 10$ or $\varnothing 12$ mm.

Basic product is encoder OptoPulse® EIL580 in hollow shaft design $\varnothing 12$ or $\varnothing 14$ mm.

Later exchange without any tools.
Material: Glass-fiber reinforced plastic

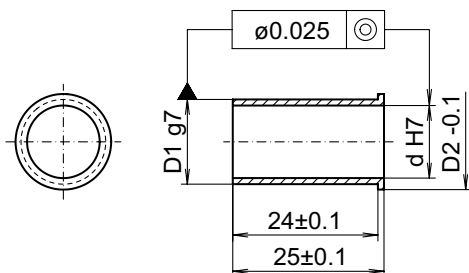
Part number

11116921	Insulating sleeve $\varnothing 10$ mm/ $\varnothing 12$ mm/25 mm long
11116923	Insulating sleeve $\varnothing 12$ mm/ $\varnothing 14$ mm/25 mm long

Suitable for

EIL580 - blind hollow shaft, EIL580 - through hollow shaft,
EIL580P - blind hollow shaft, EIL580P - through hollow shaft

Dimensions



d H7	D1 g7	D2 -0.1
$\varnothing 10$	$\varnothing 12$	$\varnothing 13.8$
$\varnothing 12$	$\varnothing 14$	$\varnothing 15.8$