

Accessories

Mounting accessories

Spring washer K 50, shaft $\varnothing 11...16$ mm



Features

- High quality torsionally stiff and backlash free coupling
- Compensating of mounting errors
- Balanced torsional rigidity (torsional spring constant)
- Protection against shaft currents with an insulated hub on non-drive end ($\varnothing 11$ H7)
- Additional key possible

Part number

K 50 Spring washer coupling
for solid shaft $\varnothing 11...16$ mm

Suitable for

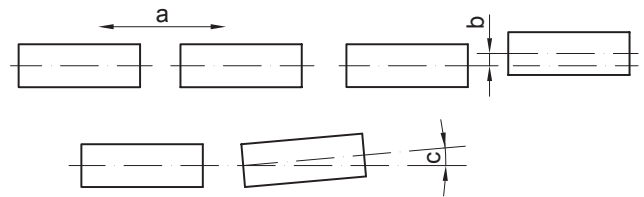
AMG 11, AMG 11 + FSL, AMG 81, EEx GP 0,2, EEx OG 9, EEx OG 9 S, ES 100, ES 90, ES 93, FOG 9, FOG 9 + GT 7.08, FOG 9 + GT 7.16, FS 90, GMP 1,0, GMPZ 1,0, GTF 7.08, GTF 7.16, OG 8, OG 9, POG 10, POG 10 + DSL.E, POG 10 + DSL.R, POG 10 + ESL 90, POG 10 + ESL 93, POG 10 + FSL, POG 10 G, POG 11, POG 11 + ESL 90, POG 11 + ESL 93, POG 11 + FSL, POG 11 G, POG 9, POG 9 + ESL 90, POG 9 + ESL 93, POG 9 + FSL, POG 9 G, POG 90, POG 90 + ESL 90, POG 90 + ESL 93, POG 90 + FSL, POGS 90, TDP 0,2, TDP 0,2 + ESL 90, TDP 0,2 + ESL 93, TDP 0,2 + FSL, TDP 0,2 + OG 9, TDP 13, TDPZ 0,2, TDPZ 0,2 + ESL 90, TDPZ 0,2 + ESL 93, TDPZ 0,2 + FSL, TDPZ 0,2 + OG 9, TDPZ 13, TG 74 d

Description

Spring washer coupling, which combines the necessary torsional stiffness with the ability to compensate for axial displacement which occurs especially through heat expansion of the drive and the play backlash of the ball bearings.

Technical data

For shaft	$\varnothing 11...16$ mm
Starting torque	8 Nm
Maximum torque	10 Nm
Operating speed	≤ 13000 rpm
Admissible axial movement (a)	$\pm 0,7$ mm ($\pm 0,3$ mm*)
Admissible parallel misalignment (b)	$\pm 0,15$ mm ($\pm 0,05$ mm*)
Admissible angular error (c)	$\pm 1^\circ$
Torsional rigidity	1400 Nm/rad
Moment of inertia	$258 \cdot 10^{-3}$ kgcm ²
Material of spring disks	X12 CrNi 17 7
Weight approx.	95 g



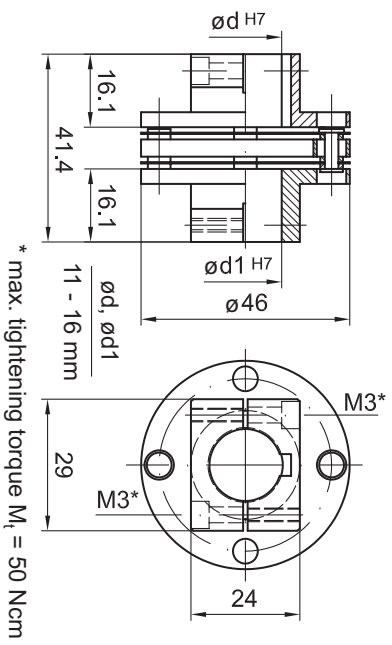
* Insulated hub version

Accessories

Mounting accessories

Spring washer K 50, shaft $\varnothing 11 \dots 16$ mm

Dimensions



* max. tightening torque $M_t = 50$ Ncm