

Preset counters mechanic

Large meter and revolution counters, subtracting

Display 5 digits, manual reset by lever

ME230, UE230



ME230 - Meter counter



UE230 - Revolution counter

Technical data - electrical ratings

Preset	1 preset
Preset setting	Press reset button and hold. Enter desired value in any order. Release reset button.
Limit switch	Trigger at zero (subtracting)
Output contact	Change-over contact
Switching voltage	230 VAC / VDC
Switching current	2 A
Switching capacity	100 VA / 30 W
Spark extinguisher	Recommended for inductive load

ME230

Precontact	Permanent precontact as permanent contact (please indicate desired value when ordering)
------------	---

Features

- Preset counter with one preset
- Meter or revolution counter
- Subtracting
- Display 5-digits
- Reset by lever
- ME230 with precontact

Technical data - mechanical design

Number of digits	5-digits
Digit height	7 mm
Count mode	Adding in a rotational direction to be indicated, subtracting in reverse direction. See part number key
Drive shaft	Both sides, $\varnothing 7$ mm
Reset	By reset lever to preset value. Do not let snap lever or make jerky movements.
Measuring range	See part number
Ambient temperature	0...+60 °C
Housing type	Surface mount housing
Housing colour	Grey
Dimensions W x H x L	126 x 88 x 78 mm
Dimensions mounting plate	142 x 88 mm
Mounting	Base plate, 4 mounting holes
Weight approx.	950 g
Material	Aluminium die cast alloy
Connection	Terminal block connector

ME230

Function	Meter counter with preset
Display	White numbers on black Decimal digits in red
Measuring speed	2 revs. = 1 digit = <2500 m/min 2 revs. = 10 di. = <250.0 m/min
Measuring accuracy	1 m, 1 dm

UE230

Function	Revolution counter with preset
Display	White numbers on black
Operating speed	≤5000 rpm

Preset counters mechanic

Large meter and revolution counters, subtracting

Display 5 digits, manual reset by lever

ME230, UE230

Part number

Meter counter

ME230.0 0 A

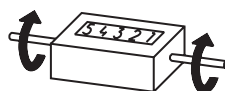
<p><u>Measuring range / trigger</u></p> <p>A 99 999 m / permanent contact at 00000</p> <p>B 9999.9 m / permanent contact at 00000</p> <p>G 89 999 m / permanent contact at 99999, with permanent precontact</p> <p>H 8999.9 m / permanent contact at 99999, with permanent precontact</p>	<p><u>Count mode /Direction of rotation</u></p> <p>03 2 revs. = 10 digits / I</p> <p>04 2 revs. = 10 digits / II</p> <p>13 2 revs. = 1 digit / I</p> <p>14 2 revs. = 1 digit / II</p>	<p><u>Housing</u></p> <p>A Surface mount housing, grey</p>	<p><u>Trigger</u></p> <p>1 Permanent contact at 00000</p> <p>5 Permanent contact at 99999, with permanent precontact</p>
---	---	--	--

Revolution counter

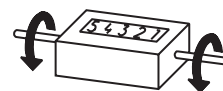
UE230.0 1 0 A A

<p><u>Measuring range</u></p> <p>A 99 999</p>	<p><u>Count mode /Direction of rotation</u></p> <p>11 1 rev. = 1 digit / I</p> <p>12 1 rev. = 1 digit / II</p>	<p><u>Housing</u></p> <p>A Surface mount housing, grey</p>	<p><u>Trigger</u></p> <p>1 Permanent contact at 00000</p>
---	--	--	---

Direction of strokes and rotation



Away from user
Sense of rotation I



Towards user
Sense of rotation II

Accessories

Measuring wheels for ME230

MR512.07A	Circumf. 50 cm, knurled aluminium
MR542.07D	Circumf. 50 cm, smooth Hytrel TPE-E
MR552.07A	Circumf. 50 cm, smooth Vulkollan PUR
MR562.07A	Circumf. 50 cm, knopped rubber NBR Nitril
MR592.07D	Circumf. 50 cm, grooved Hytrel TPE-E

Dimensions

