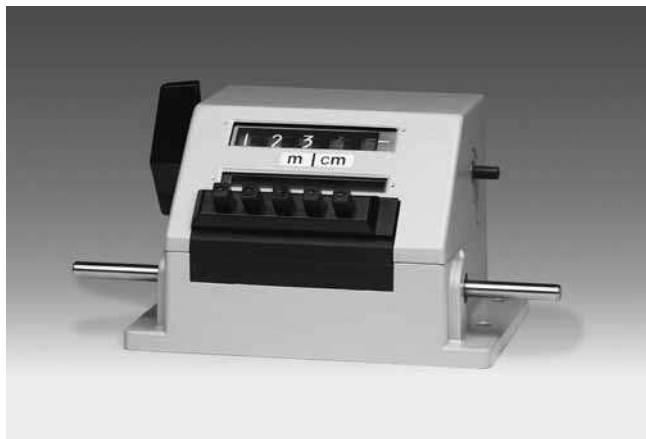


# Preset counters mechanic

## Meter counters PTB approved, adding

### Display 5 digits, manual reset by lever

## ME280 PTB



ME280 - PTB Meter counter

### Features

- PTB Preset counter with one preset
- Meter counter
- Adding
- Display 5-digits
- Reset by lever

### Technical data - electrical ratings

Preset	1 preset
Preset setting	Press reset button and hold. Enter desired value in any order. Release reset button.
Limit switch	Trigger at preset 1 (adding)
Output contact	Change-over contact
Switching voltage	230 VAC / VDC
Switching current	2 A
Switching capacity	100 VA / 30 W
Spark extinguisher	Recommended for inductive load

### Technical data - mechanical design

Function	PTB Meter counter with preset
Display	White numbers on black Decimal digits in red
Number of digits	5-digits
Digit height	7 mm
PTB approval	1.5 / 80.13
Count mode	Adding in a rotational direction to be indicated, subtracting in reverse direction. 2 revolutions = 100 counts
Drive shaft	Both sides, $\varnothing 7$ mm
Reset	By reset lever to preset value. Do not let snap lever or make jerky movements.
Measuring speed	2 revs. = 100 digits = <25.00 m/min
Measuring accuracy	1 cm
Measuring range	999.99 m
Ambient temperature	0...+60 °C
Housing type	Surface mount housing
Housing colour	Grey
Dimensions W x H x L	120 x 105 x 95 mm
Dimensions mounting plate	158 x 105 mm
Mounting	Base plate, 4 mounting holes
Weight approx.	1400 g
Material	Aluminium die cast alloy
Connection	Terminal block connector

# Preset counters mechanic

Meter counters PTB approved, adding  
Display 5 digits, manual reset by lever

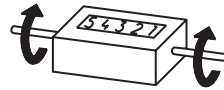
ME280 PTB

## Part number

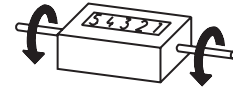
ME280.0 **6** **0** **G** **C**

				Measuring range
			C	999.99
				Count mode /Direction of rotation
			01	2 revs. = 100 digits / I
			02	2 revs. = 100 digits / II
				Housing
			G	Surface mount housing, grey
				Preset / reset
	6			1 preset / reset lever, permanent contact

## Direction of strokes and rotation



Away from user  
Sense of rotation I



Towards user  
Sense of rotation II

## Accessories

### Measuring wheels

MR512.07A	Circumf. 50 cm, knurled aluminium
MR542.07D	Circumf. 50 cm, smooth Hytrel TPE-E
MR552.07A	Circumf. 50 cm, smooth Vulkollan PUR
MR562.07A	Circumf. 50 cm, knopped rubber NBR Nitril
MR592.07D	Circumf. 50 cm, grooved Hytrel TPE-E

## Dimensions

