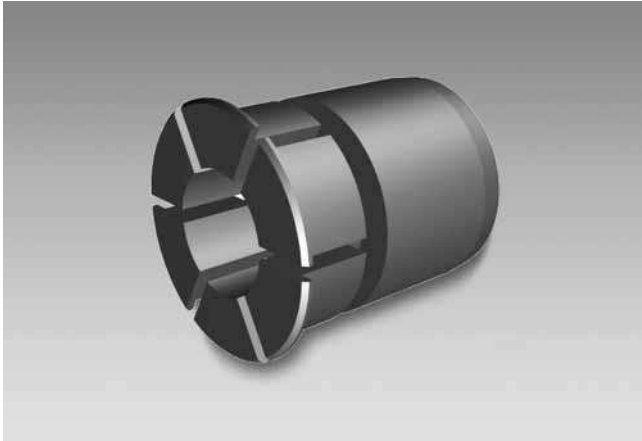


# Accessories

## Mounting accessories

### Reducer insert $\varnothing 25-14.0$



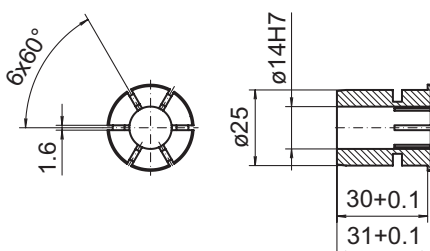
#### Description

Allows the mounting on diameter 14 mm on the motor shaft.  
Basis for the reducer insert is a hollow shaft diameter of 25 mm. Subsequent replacement without tools.  
Outer diameter: 25 mm  
Material: Aluminium

#### Part number

11095286 Reducer insert  $\varnothing 25/14.0$  mm

#### Dimensions



Z01535