

Accessories

Mounting accessories

Reducer insert HS35



Description

Allows the mounting on different diameter on the motor shaft. The basis is the standard unit with 1.00". Subsequent replacement without tools possible.
Outer diameter: 1.00"
Material: Aluminium

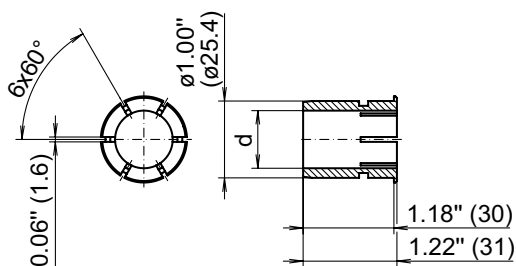
Part number

11084462	Reducer insert HS35 $\varnothing 0.375"$ ($\varnothing 9.525$ mm)
11078636	Reducer insert HS35 $\varnothing 0.50"$ ($\varnothing 12.7$ mm)
11080114	Reducer insert HS35 $\varnothing 0.625"$ ($\varnothing 15.875$ mm)
11078639	Reducer insert HS35 $\varnothing 0.75"$ ($\varnothing 19.05$ mm)
11078654	Reducer insert HS35 $\varnothing 0.87"$ ($\varnothing 22.225$ mm)
11087744	Reducer insert HS35 $\varnothing 10$ mm
11087745	Reducer insert HS35 $\varnothing 12$ mm
11087746	Reducer insert HS35 $\varnothing 14$ mm
11148651	Reducer insert HS35 $\varnothing 15$ mm
11087747	Reducer insert HS35 $\varnothing 16$ mm
11087748	Reducer insert HS35 $\varnothing 18$ mm
11087750	Reducer insert HS35 $\varnothing 20$ mm

Suitable for

HS35F, HS35P - Programmable, HS35S - Sine

Dimensions



ø nominal dimension			tolerance	
inch (in ")	metric (in mm)		inch (in 1/1000")	metric (in µm)
0.875"	22.225	G7	+1.10 +0.28	+28 +7
0.750"	19.050	G7	+1.10 +0.28	+28 +7
0.625"	15.875	G7	+0.94 +0.24	+24 +6
0.500"	12.700	G7	+0.94 +0.24	+24 +6
0.375"	9.525	G7	+0.79 +0.20	+20 +5
0.787"	20	H8	+1.30 0	+33 0
0.709"	18	H8	+1.06 0	+27 0
0.630"	16	H8	+1.06 0	+27 0
0.551"	15	H8	+1.06 0	+27 0
0.551"	14	H8	+1.06 0	+27 0
0.472"	12	H8	+1.06 0	+27 0
0.394"	10	H8	+1.06 0	+27 0