

# Accessories

## Connectors and cables

### Cable connector female/male M23, 9-pin, less cable

---



#### Part number

Z 153.B01 Female connector M23, 9-pin, without cable

Z 153.S01 Cable connector M23, 9-pin, without cable

---

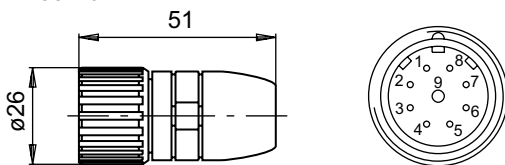
#### Suitable for

GXP6H, GXP6W

---

#### Dimensions

Z 153.B01



Z 153.S01

