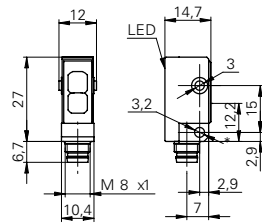


# Diffuse sensors with background suppression

## FHDK 10G5121/S35A

### dimension drawing



\* emitter axis

### general data

type	background suppression
light source	pulsed red LED
sensing distance Tw	50 mm ±3 mm
alignment / soiled lens indicator	flashing light indicator
light indicator	LED yellow
wave length	660 nm
suppression of reciprocal influence	yes

### electrical data

response time / release time	< 1 ms
voltage supply range +Vs	10 ... 30 VDC
current consumption max. (no load)	25 mA
current consumption typ.	18 mA
voltage drop Vd	< 1,8 VDC
output function	light / dark operate
output circuit	push-pull
output current	< 50 mA
short circuit protection	yes
reverse polarity protection	yes

### mechanical data

width / diameter	10,4 mm
height / length	27 mm
depth	14,7 mm
type	rectangular
housing material	plastic (ASA)
front (optics)	PMMA
connection types	connector M8 4 pin

### ambient conditions

operating temperature	-25 ... +65 °C
protection class	IP 67

### photo



### connection diagram

