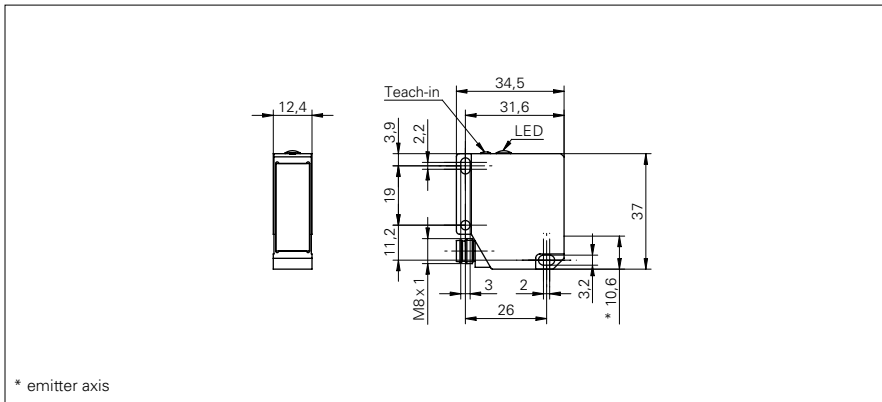


Distance sensors

OADM 12U6460/S35A

dimension drawing



* emitter axis

general data

| | |
|--------------------------|-----------------------------|
| measuring distance Sd | 16 ... 120 mm |
| adjustment | Teach-in: button / external |
| Teach-in range min. | > 2 mm |
| power on indication | LED green |
| soiled lens indicator | LED red |
| resolution | 0,002 ... 0,12 mm |
| linearity error | ± 0,015 ... ± 0,35 mm |
| light source | pulsed red laser diode |
| wave length | 650 nm |
| laser class | 2 |
| beam type | point |
| beam diameter | 0,9 ... 0,5 mm |
| interference suppression | < 30 ms |
| temperature drift | < 0,06 % Sde/K |

electrical data

| | |
|------------------------------------|----------------|
| response time / release time | < 0,9 ms |
| voltage supply range +Vs | 12 ... 28 VDC |
| current consumption max. (no load) | 100 mA |
| output circuit | analog |
| output signal | 0 ... 10 VDC |
| load resistance | > 100 kOhm |
| short circuit protection | yes |
| reverse polarity protection | yes, Vs to GND |

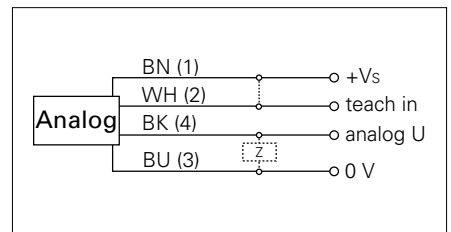
mechanical data

| | |
|------------------|--------------------|
| width / diameter | 12,4 mm |
| height / length | 37 mm |
| depth | 34,5 mm |
| type | rectangular |
| housing material | die-cast zinc |
| front (optics) | glass |
| connection types | connector M8 4 pin |

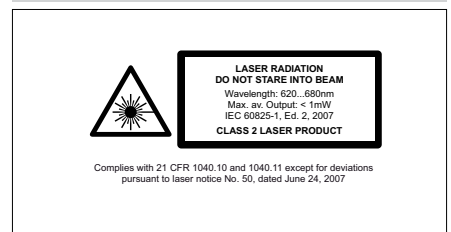
photo



connection diagram



laser warning



Distance sensors**OADM 12U6460/S35A****ambient conditions**

| | |
|------------------------|--------------|
| ambient light immunity | < 30 kLux |
| operating temperature | 0 ... +50 °C |
| protection class | IP 67 |