

# Bussmann series BC Industrial HRC fuse links



## Product description

Eaton's Bussmann series range of British standard fuse links is specifically designed for the protection of general industrial applications e.g. power distribution, cable protection, motor protection.

## Standard features

- Good peak let-through current limitation
- 1:1:6 Selective coordination ratio between 'minor' and 'major' fuse
- gG characteristics for cable protection and general purpose applications
- Power loss values within the limits of IEC 60269

**Catalogue symbol**

- BC(Amps)

**Technical data**

Rated voltage: 500 V a.c. / 250 V d.c.

Rated current: 40 to 63 A

Class of operation: gG / gM

Breaking capacity:

- 80 kA at 500 V a.c.
- 40 kA at 250 V d.c.

**Standards/approvals**

- BS88
- IEC 60269
- Suitable for use in RoHS compliant applications

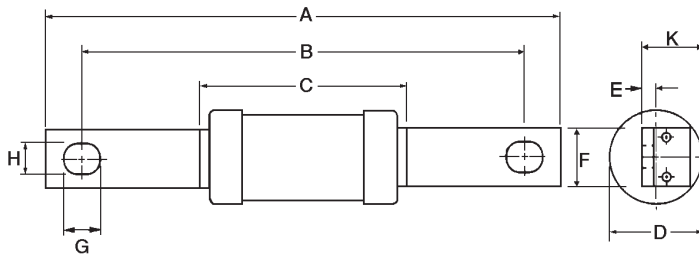
**Packaging**

- MOQ 20

**Table 1. Technical data**

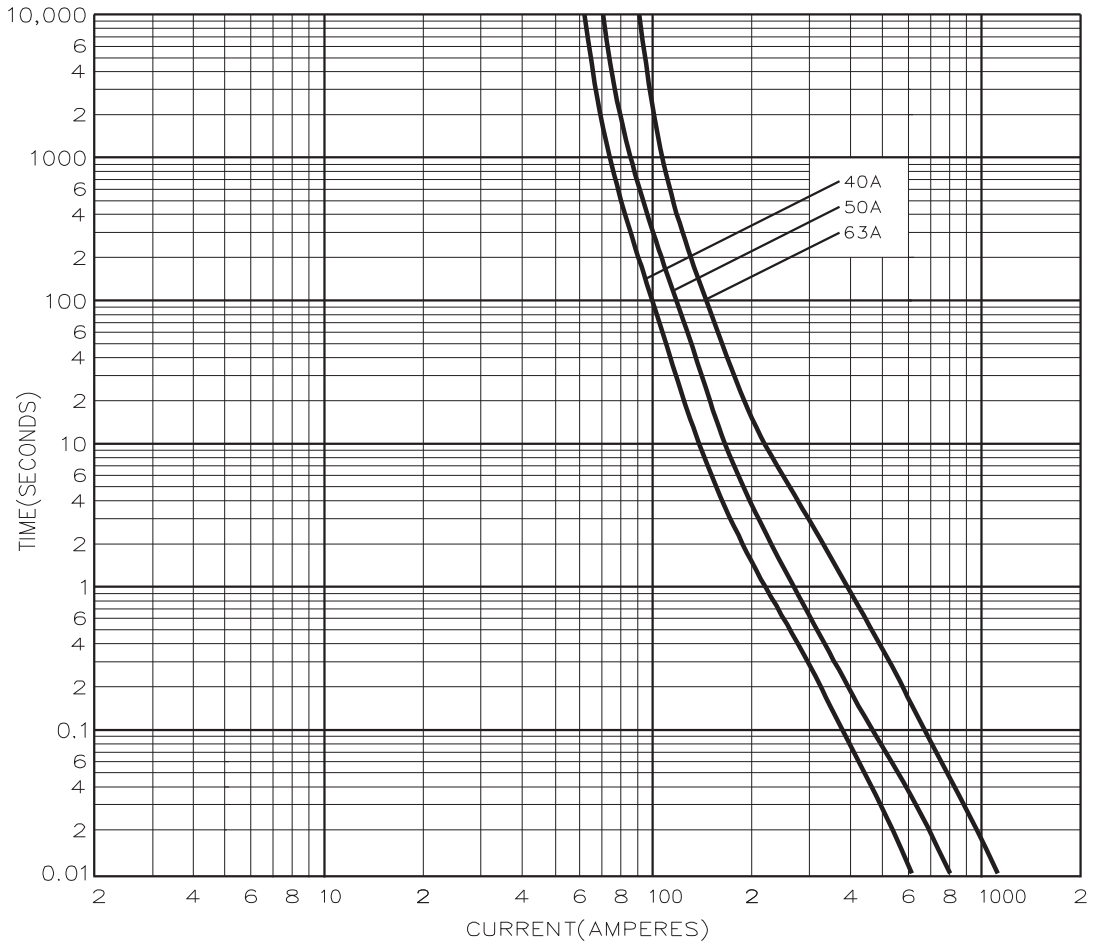
| Catalogue number | Rated voltage           | Rated current (Amps) | Breaking capacity                          | Energy integrals I <sup>2</sup> t (A <sup>2</sup> S) |                     |                     | Watts loss (W) | Product class | Weight (grams) |
|------------------|-------------------------|----------------------|--|--|---------------------|---------------------|----------------|---------------|----------------|
|                  |                         |                      |  | Pre-arcing   | Total at 415 V a.c. | Total at 550 V a.c. |                |               |                |
| BC40             | 500 V a.c. / 250 V d.c. | 40                   | 80 kA at 500 V a.c.<br>40 kA at 250 V d.c. | 1400   | 3600                | 5000                | 4.7            | gG            | 55             |
| BC50             | 500 V a.c. / 250 V d.c. | 50                   |  | 3000   | 8050                | 11250               | 4.9            | gG            | 55             |
| BC63             | 500 V a.c. / 250 V d.c. | 63                   |  | 6700   | 18850               | 25100               | 5.6            | gG            | 55             |
| BC63M80          | 500 V a.c. / 250 V d.c. | 63M80                | 80 kA at 500 V a.c.<br>40 kA at 250 V d.c. | 12600  | 33900               | 50000               | 4.4            | gM            | 55             |
| BC63M100         | 500 V a.c. / 250 V d.c. | 63M100               |  | 24000  | 72900               | 90000               | 3.4            | gM            | 55             |

**Dimensions - mm**

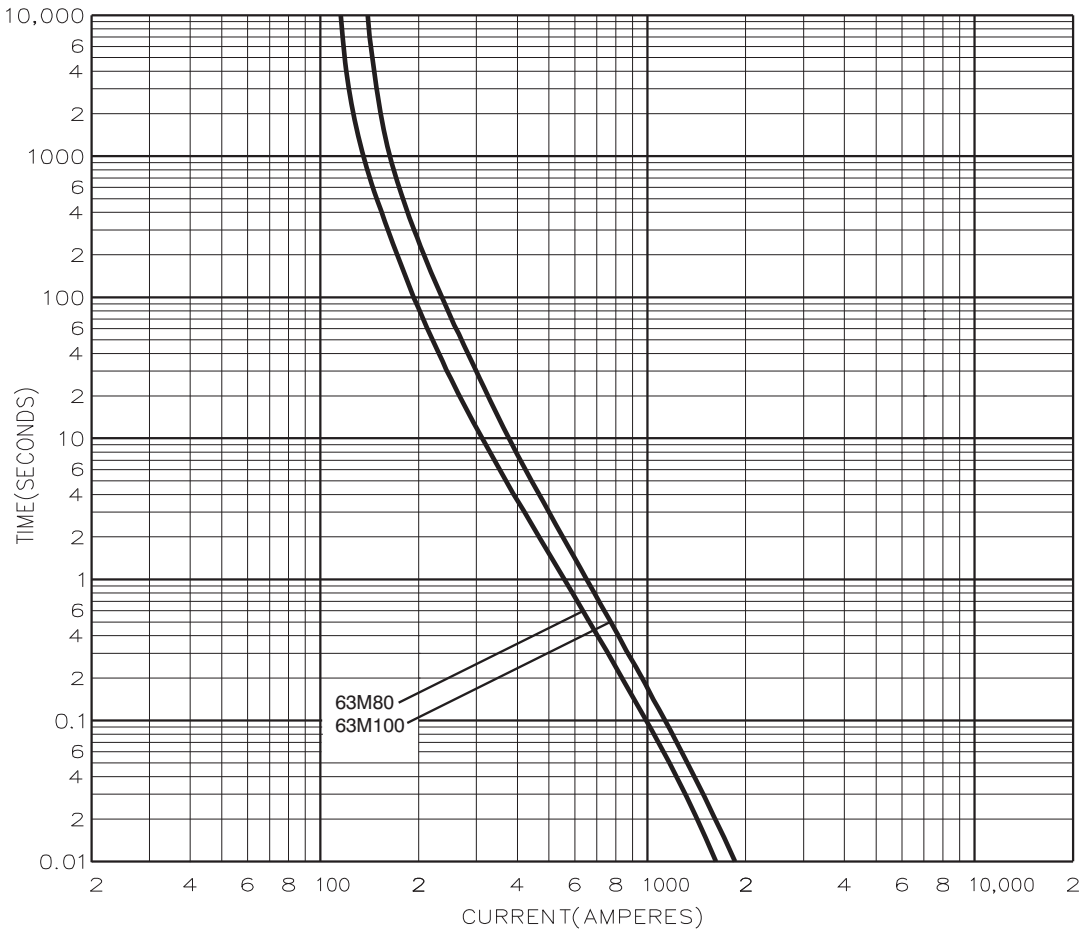


| Catalogue numbers       | A     | B  | C  | D  | E   | F | G    | H    | K    |
|-------------------------|-------|----|----|----|-----|---|------|------|------|
| BC40-63 and BC63M80-100 | 113.5 | 97 | 55 | 21 | 1.6 | 7 | 13.5 | 12.7 | 11.2 |

Time-current characteristic curve - non motor rated



**Time-current characteristic curve - motor rated**



Changes to the products, to the information contained in this document, and to prices are reserved; so are errors and omissions. Only order confirmations and technical documentation by Eaton is binding. Photos and pictures also do not warrant a specific layout or functionality. Their use in whatever form is subject to prior approval by Eaton. The same applies to Trademarks (especially Eaton, Moeller, and Cutler-Hammer). The Terms and Conditions of Eaton apply, as referenced on Eaton Internet pages and Eaton order confirmations.

**Eaton**  
 EMEA Headquarters  
 Route de la Longeraie 7  
 1110 Morges, Switzerland  
 Eaton.eu

© 2015 Eaton  
 All Rights Reserved  
 Publication No. 4113  
 July 2015