

# Bussmann series

## R40 BS88 Offset bolted tags

### **Product description**

Eaton's Bussmann series range of R40 British Standard fuse links is specifically designed for the protection of general industrial applications e.g. power distribution and cable protection.

### **Standard features**

- Good peak let-through current limitation
- 1:1:6 Selective coordination ratio between "minor" and "major" fuse
- Power loss values well within the limits of IEC 60269



*Powering Business Worldwide*

**Catalogue Symbol:**

- 450R40
- 500R40

**Technical data:**

- Rated voltage: 690 V a.c. / 400 V d.c.
- Rated current: 450 and 500 A
- Breaking capacity: 80 kA
- Class of operation: gG

**Standards/Approvals:**

- BS88
- IEC 60269
- RoHS compliant

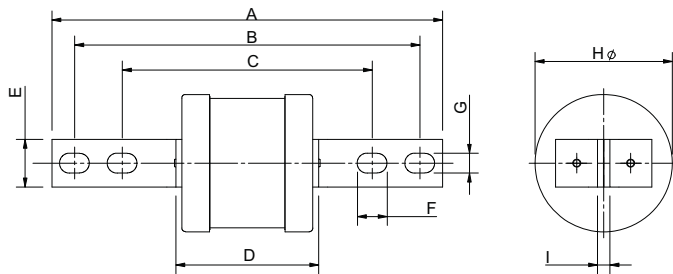
**Packaging:**

- MOQ: 1

**Table 1. Technical Data**

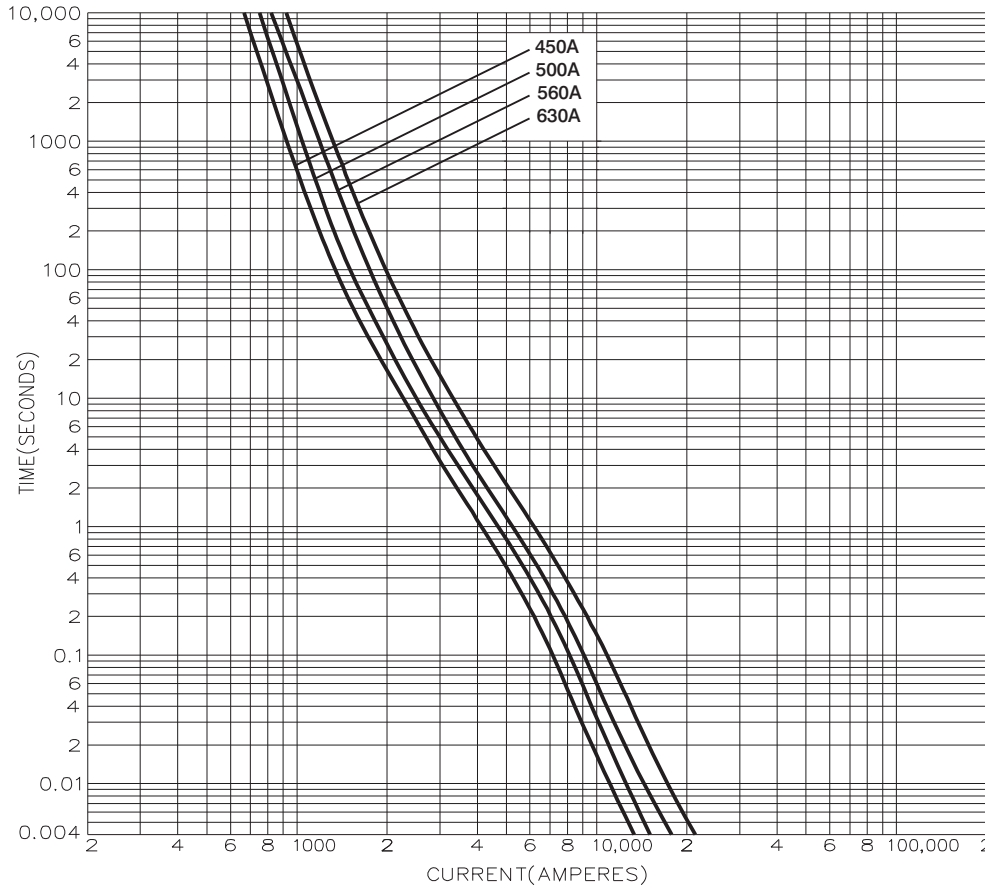
Part number	Rated voltage	Rated current (Amps)	Energy integrals I <sup>2</sup> t (A <sup>2</sup> S)			Watts loss W	Product Class	
			Pre-arcing	Total at 415V	Total at 550V			Total at 660V
450R40	690 V a.c. / 400 V d.c.	450	880,000	1,600,000	2,200,000	4,400,000	32	gG
500R40	690 V a.c. / 400 V d.c.	500	1,100,000	2,000,000	2,800,000	5,500,000	38	gG

**Dimensions - mm**



Catalogue numbers	A	B	C	D	E	F	G	H	I
450 and 500R40	210	184	133	81	19	16	10	74	9.5

**Time current curve - 450 and 500 A only**



Changes to the products, to the information contained in this document, and to prices are reserved; so are errors and omissions. Only order confirmations and technical documentation by Eaton is binding. Photos and pictures also do not warrant a specific layout or functionality. Their use in whatever form is subject to prior approval by Eaton. The same applies to Trademarks (especially Eaton, Moeller, and Cutler-Hammer). The Terms and Conditions of Eaton apply, as referenced on Eaton Internet pages and Eaton order confirmations.

**Eaton**  
 EMEA Headquarters  
 Route de la Longeraie 7  
 1110 Morges, Switzerland  
 Eaton.eu

© 2015 Eaton  
 All Rights Reserved  
 Publication No. 4162  
 July 2015