

# Bussmann series H07-660 Industrial HRC fuse links



## Product description

Eaton's Bussmann series range of H07-660 fuse links is specifically designed for the protection of large industrial installations up to 690 V a.c.

## Standard features

- Good peak let-through current limitation
- 1:1:6 Selective coordination ratio between "minor" and "major" fuse
- gG characteristics for cable protection and general purpose applications
- Power loss values well within the limits of IEC 60269

**Catalogue symbol:**

- H07-660(Amps)

**Technical data:**

- Rated voltage: 690 V a.c.
- Rated current: 2 to 32 A
- Breaking capacity: 80 kA
- Class of operation: gG

**Standards/approvals:**

- BS88
- IEC 60269
- Suitable for use in RoHS compliant applications

**Fuse holders (sold separately):**

- CM32F (Camaster)
- RS32H (Red Spot)

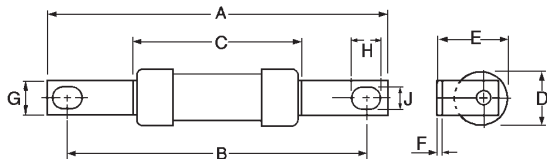
**Packaging:**

- MOQ 20

**Table 1. Technical data**

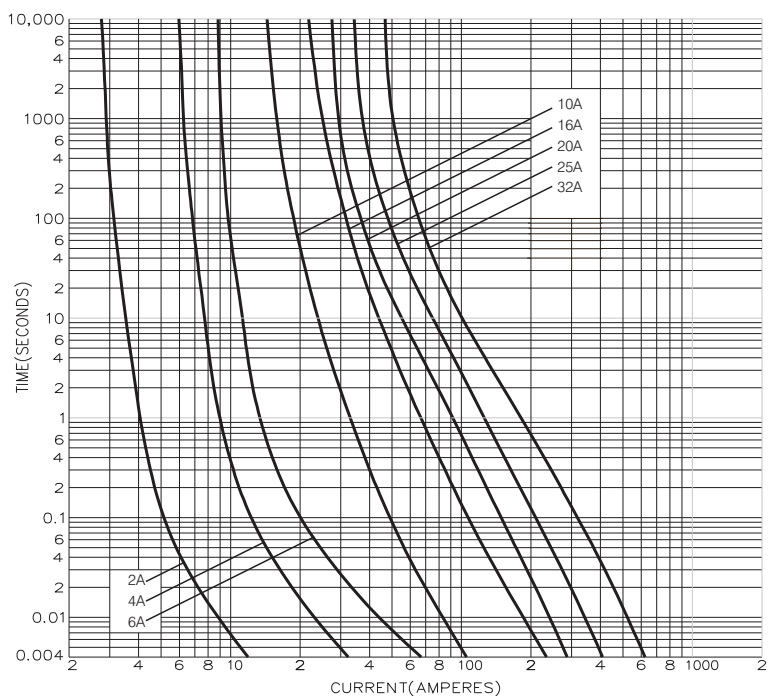
Part number	Rated voltage	Rated current (Amps)	Energy integrals I <sup>2</sup> t (A <sup>2</sup> S)			Watts loss		Product Class
			Pre-arcing	Total at 415V	Total at 550V	Total at 660V	W	
2H07-660	690 V a.c.	2	0.8	1.6	2.4	3.2	1.5	gG
4H07-660	690 V a.c.	4	5	10	15	20	2.7	gG
6H07-660	690 V a.c.	6	20	40	60	80	3.3	gG
10H07-660	690 V a.c.	10	44	130	180	220	2.8	gG
16H07-660	690 V a.c.	16	250	765	1000	1200	2.8	gG
20H07-660	690 V a.c.	20	430	900	1300	2500	2.7	gG
25H07-660	690 V a.c.	25	850	1800	2500	4900	3.1	gG
32H07-660	690 V a.c.	32	2100	4400	6100	12000	3.3	gG

**Dimensions - mm**



Catalogue numbers	A	B	C	D	E	F	G	H	J
2-32H07-660	82.3	73	52	22	22.4	11.5	8.7	7.7	5.4

**Time current curve**



Changes to the products, to the information contained in this document, and to prices are reserved; so are errors and omissions. Only order confirmations and technical documentation by Eaton is binding. Photos and pictures also do not warrant a specific layout or functionality. Their use in whatever form is subject to prior approval by Eaton. The same applies to Trademarks (especially Eaton, Moeller, and Cutler-Hammer). The Terms and Conditions of Eaton apply, as referenced on Eaton Internet pages and Eaton order confirmations.

**Eaton**  
EMEA Headquarters  
Route de la Longeraie 7  
1110 Morges, Switzerland  
Eaton.eu

© 2015 Eaton  
All Rights Reserved  
Publication No. 4150  
July 2015