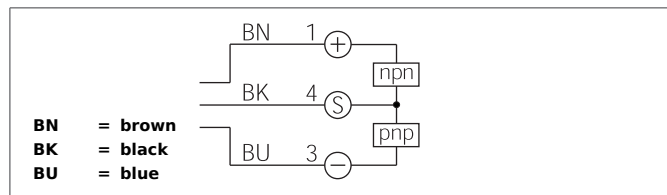


# KSSTI 400 G3K-TSSL

## Capacitive Label Sensor



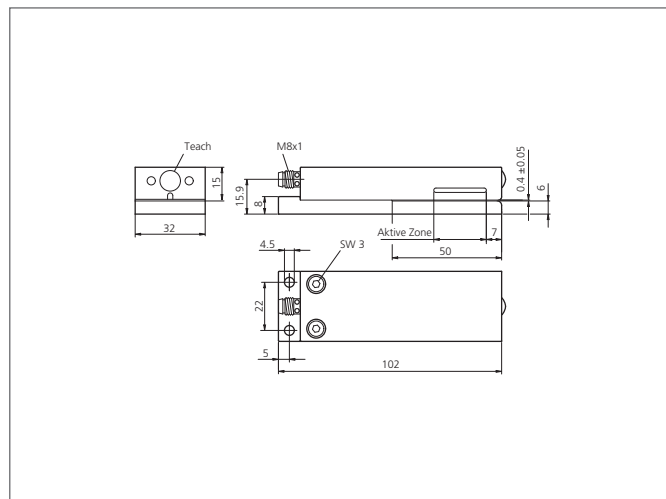
- Detection of transparent labels, double layers, bonding points, cracking points etc.
- Sensitivity adjustment via teach key
- Auto-teach during a running process
- Temperature and air humidity compensation
- Static functional principle
- Separated housing



### Safety instructions

The Instruments are not to be used for safety applications, in particular applications in which safety of persons depends on proper operation of the instruments.

These instruments shall exclusively be used by qualified personnel.



TECHNICAL INFORMATION (typ.)		+20°C, 24V DC
Operating principle		Capacitive
Branch length		50 mm
Slot width		0,4 mm
Service voltage		10 ... 35 V DC
Internal power consumption		< 70 mA
Sensitivity adjustment		Teach key
Switching output		Push pull, 200 mA, NO/NC, switchable
Switching hysteresis		material dependent
Label length		> 2 mm
Label interspace		> 2 mm
Label thickness		< 0,3 mm
Tape speed		< 500 m/min
Recovery time		< 150 ms
Voltage drop		< 2,5 V
Ambient temperature		0 ... +60 °C
Insulation voltage endurance		500 V
Protection class		IP 65
Casing material		Aluminium black anodized
Connection		Connector, M8, 3-poled
Connecting cable		TK ...