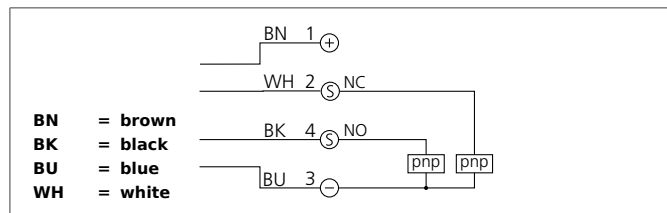


DCCR 40 K 40 PSOL-KL

Inductive Proximity Switch

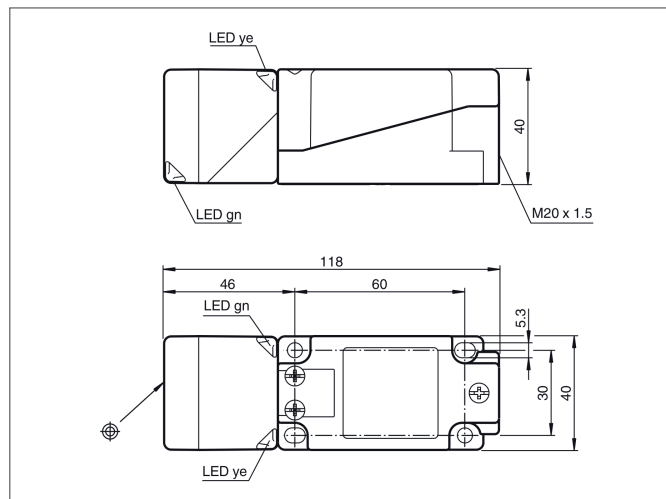


- Sensor probe pivotable as well as rotatable
- Connection clamps
- Integrated amplifier
- Protection against short-circuit and reverse polarity
- Starting pulse suppression
- LEDs for service voltage and output status
- 4-way LED indicator for 360° visibility



Safety instructions

The Instruments are not to be used for safety applications, in particular applications in which safety of persons depends on proper operation of the instruments.
These instruments shall exclusively be used by qualified personnel.



TECHNICAL INFORMATION (typ.)		+20°C, 24V DC
Operating principle		Inductive
Evaluation		digital
Size		40 x 40 x 118 mm (Dimensions)
Design		cuboid design
Mounting		non-flush
Operating distance		40 mm
Maximum rating		short-circuit-proof, polarity-safe
Standardized measuring plate		120 x 120 x 1 mm
Service voltage		10 ... 30 V DC
Internal power consumption		< 20 mA
Switching output		pnp, 200 mA, exclusive OR
Switching hysteresis		5 %
LED indicator		yes
Voltage drop		< 2,0 V
Switching frequency		0 ... 150 Hz
Ambient temperature		-25 ... +85 °C
Protection class		IP 68, IP 69K
Protection degree		II
Casing material		PA / metal with epoxy powder coating
Connection		clamps