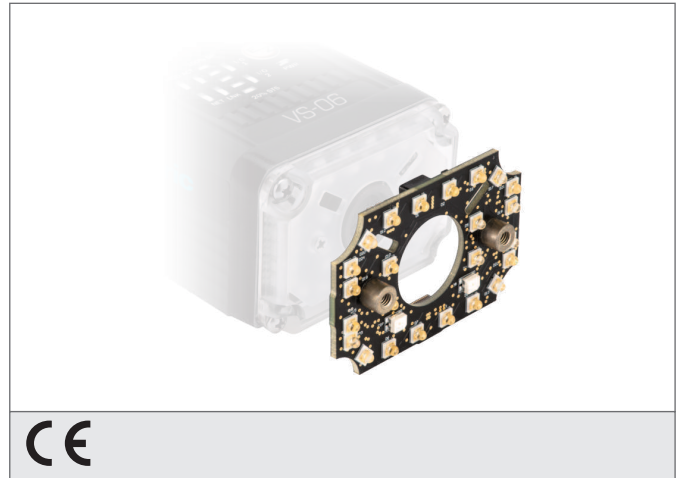


VSID-BE-5 LED Board Replacement Kit

- Flashable
- Very light intensive
- Homogenous illumination
- Easy-to-install
- Mounting materials included in scope of delivery



Safety instructions

The Instruments are not to be used for safety applications, in particular applications in which safety of persons depends on proper operation of the instruments.
These instruments shall exclusively be used by qualified personnel.

Im Lieferumfang enthalten sind:
The scope of delivery includes:

- ① 1 x LED-Platine
LED Board
- ② 1 x Ersatz-Dichtring für Frontscheibe
Replacement Gasket for Front Cover
- ③ 4 x Kreuzschlitz-Schrauben 4-40x1/4" / mit Federring
4-40x1/4" Phillips-head Screws w/ Split Lock Washers
- ④ 1 x Anleitung zum Wechsel der LED-Platine
LED Board Replacement Guide

TECHNICAL INFORMATION (typ.)

Characteristics	Flashable by means of camera-internal flash controller
Light colour	White
For	ID-06 with liquid lens, VS-06 with liquid lens
Scope of delivery	see DRAWING